

MIDWEST LAND GROUP PRESENTS

65.5 ACRES IN

WRIGHT COUNTY MISSOURI



MidwestLandGroup.com

MIDWEST LAND GROUP IS HONORED TO PRESENT

CHARMING HOME ON 66 +/- ACRES

Escape to your own private ridge-top retreat on 66 +/- acres in Falcon, Missouri. After meandering up a long private drive, you'll arrive at a charming 1,100 +/- square foot home with 3 bedrooms and 2 bathrooms, perfectly situated to overlook the surrounding Ozark landscape. Inside, you'll appreciate the country charm and thoughtful updates, including a new central A/C system, renovated master bath, and inviting front and back porches that make it easy to relax and enjoy the views.

A well-built shop with concrete floors provides excellent storage and workspace already equipped with electric and plumbed for water, adding even more versatility for projects or equipment, especially with the large lean-to addition.

The land itself is a recreational paradise, featuring a diverse mix of finger-ridge pastures, mature hardwood timber, natural springs, and rolling draws. Wildlife is abundant, with strong populations of deer and turkey, making it a premier hunting property.

Ideally located just minutes from the Gasconade River and nearly touching Elk Creek, this tract offers endless opportunities for outdoor adventure, whether you're hunting, exploring, or enjoying the nearby waterways.

If you've been searching for a secluded homestead, a private hunting retreat, or a versatile recreational farm, this Falcon property is a rare find that delivers on all fronts.

PROPERTY FEATURES

PRICE: **\$420,000** | COUNTY: **WRIGHT** | STATE: **MISSOURI** | ACRES: **66**

- Secluded
- No restrictions
- Diverse habitat
- Nice shop
- Springs
- Great hunting
- Mature timber
- Close to Gasconade River



1,100 +/- SQUARE FOOT HOME

After meandering up a long private drive, you'll arrive at a charming home with 3 bedrooms and 2 bathrooms, perfectly situated to overlook the surrounding Ozark landscape.



3 BEDROOMS AND 2 BATHROOMS



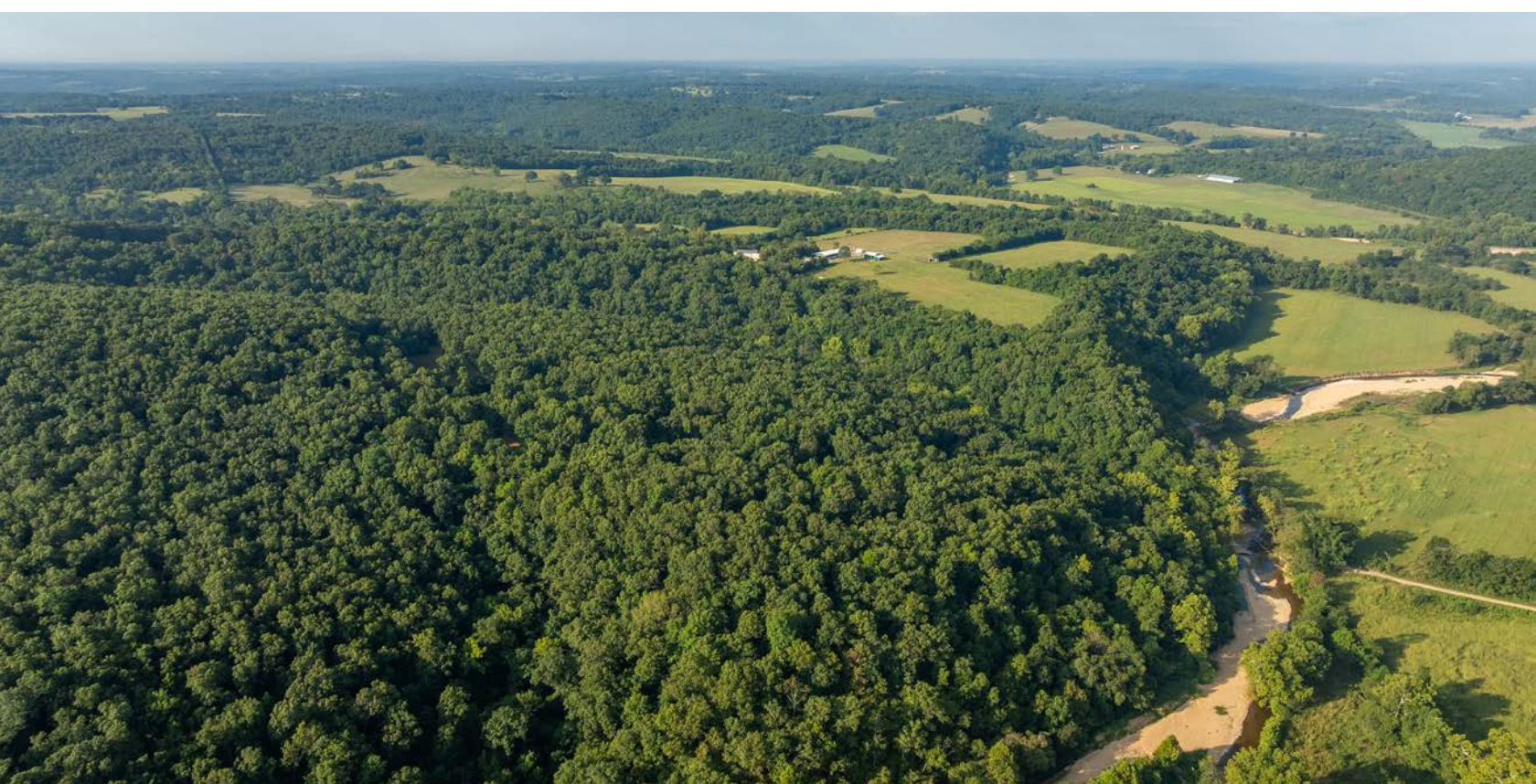
SECLUDED



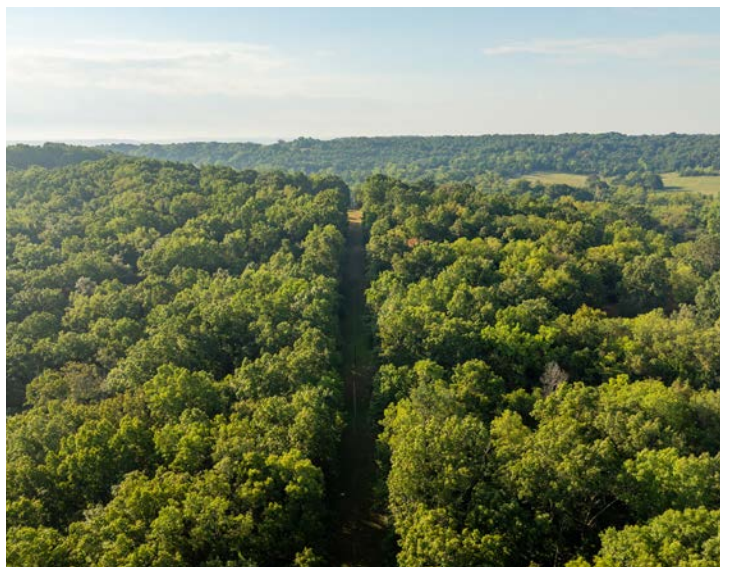
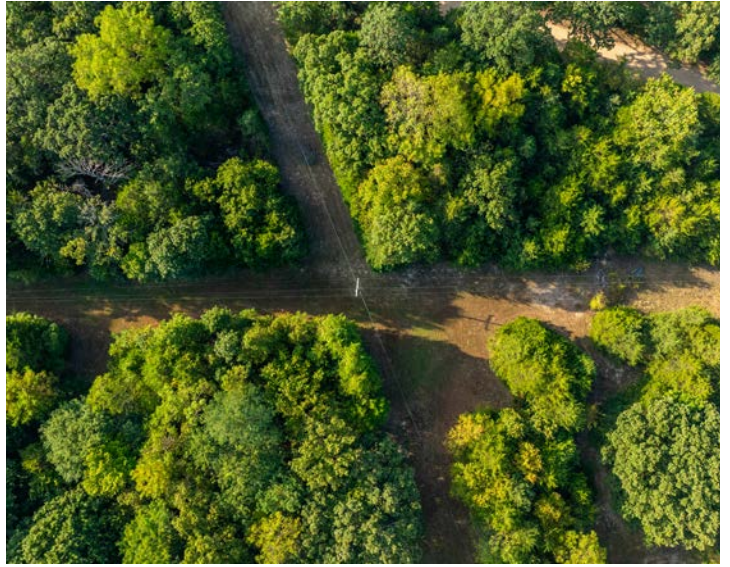
WELL-BUILT SHOP



MATURE TIMBER



ADDITIONAL PHOTOS



AERIAL MAP



Boundary Center: 37° 27' 10.7, -92° 26' 3.69

0ft 1195ft 2390ft



Maps Provided By:



© AgriData, Inc. 2023

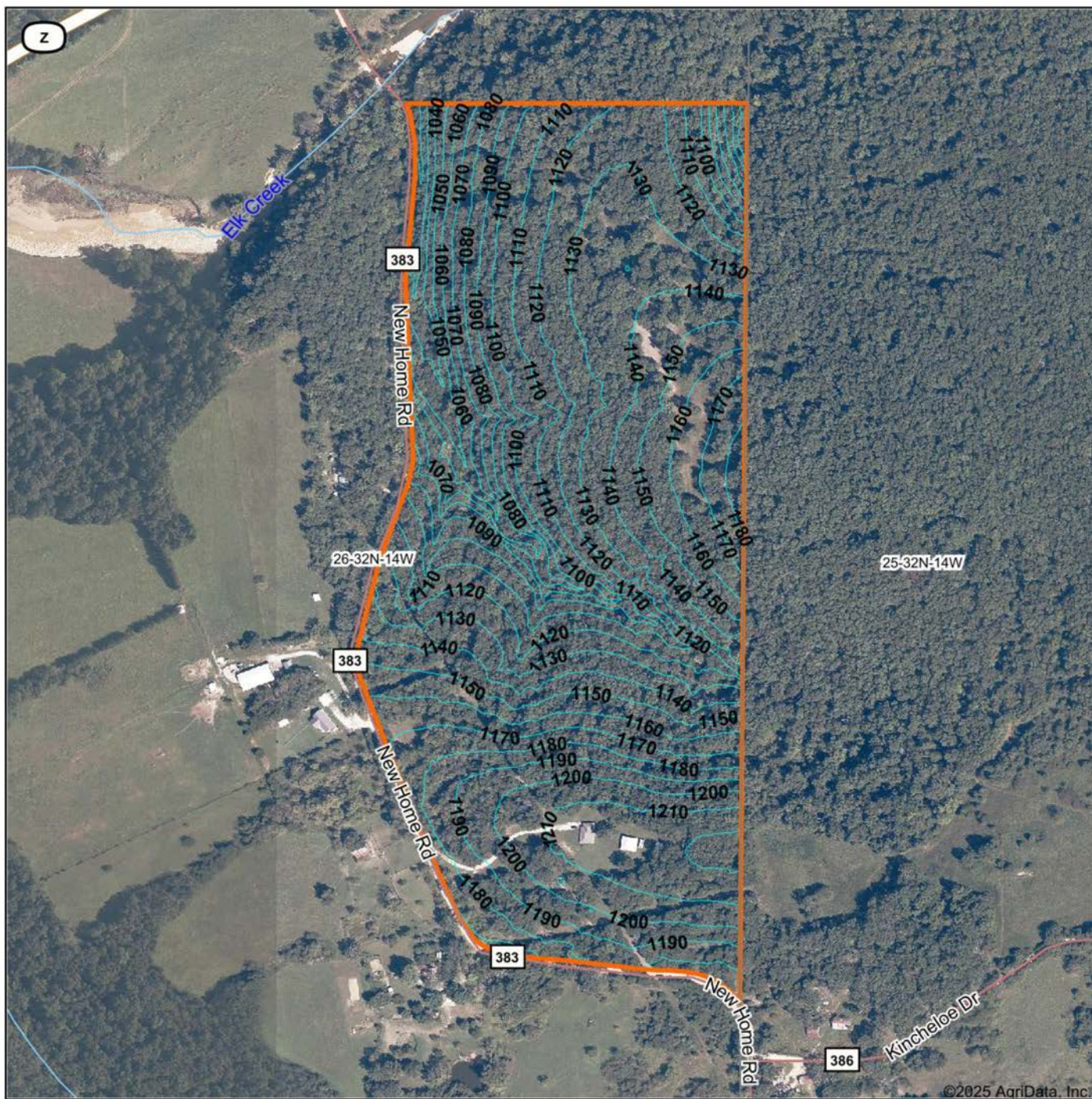
www.AgriDataInc.com

26-32N-14W
Wright County
Missouri



8/25/2025

TOPOGRAPHY MAP



Maps Provided By:



© AgriData, Inc. 2023 www.AgriDataInc.com

Source: USGS 1 meter dem

Interval(ft): 10.0

Min: 1,014.9

Max: 1,223.5

Range: 208.6

Average: 1,137.5

Standard Deviation: 44.26 ft

0ft 473ft 946ft

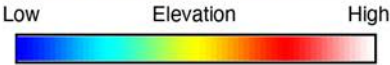
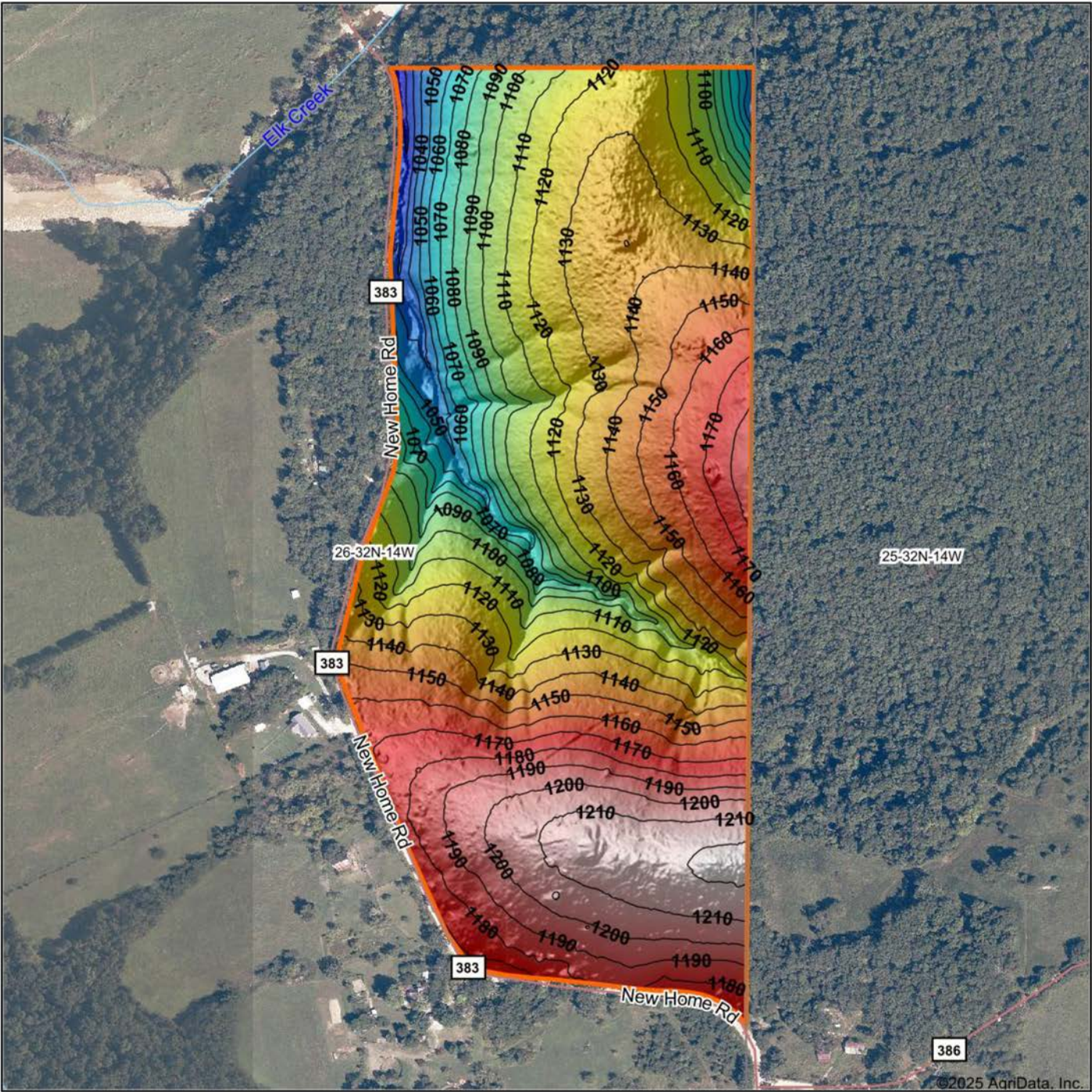


8/25/2025

26-32N-14W
Wright County
Missouri

Boundary Center: 37° 27' 10.7, -92° 26' 3.69

HILLSHADE MAP

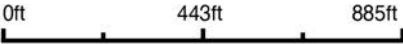


Maps Provided By:



© AgriData, Inc. 2023

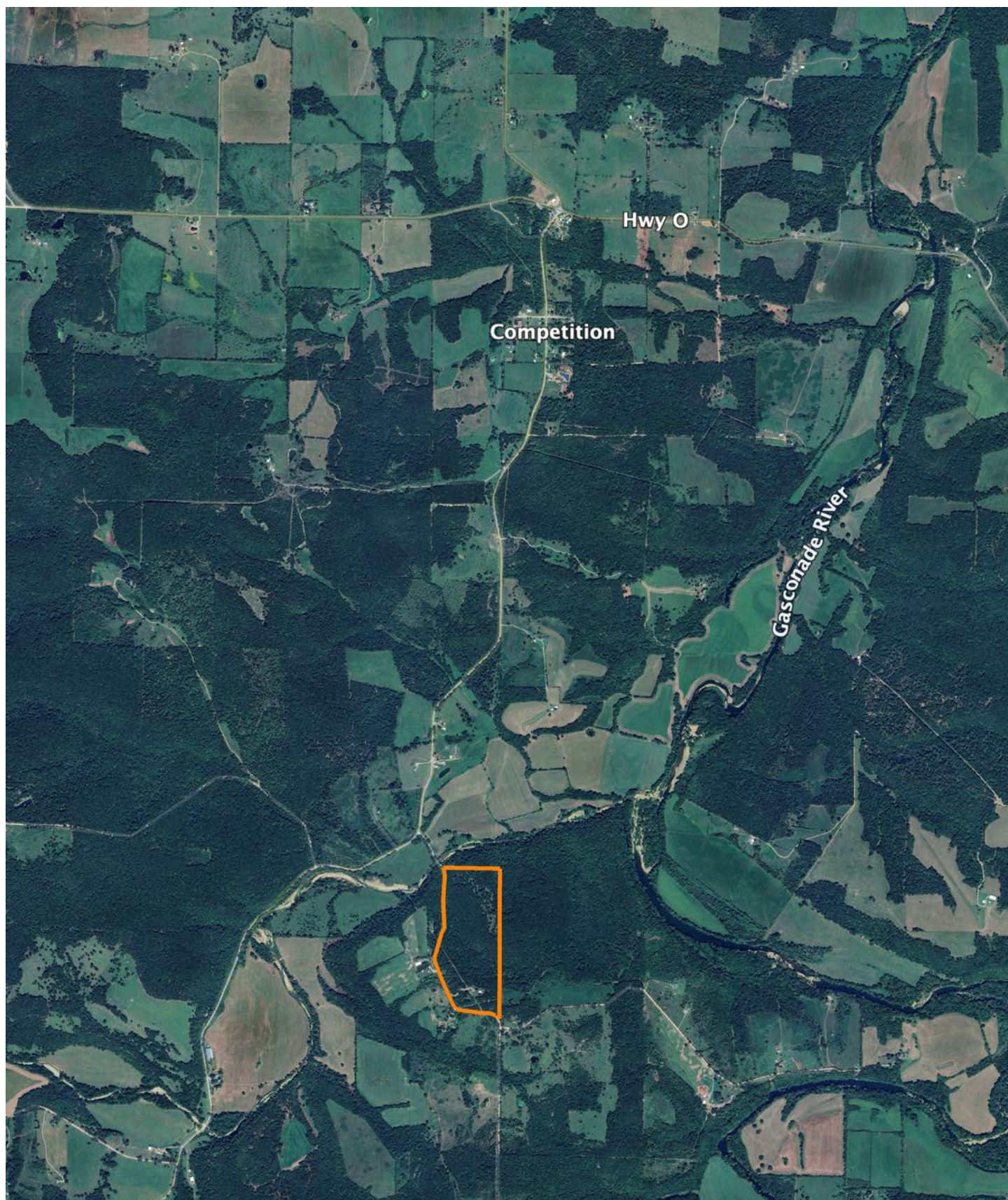
Source: USGS 1 meter dem
Interval(ft): 10
Min: 1,014.9
Max: 1,223.5
Range: 208.6
Average: 1,137.5
Standard Deviation: 44.26 ft



26-32N-14W
Wright County
Missouri

Boundary Center: 37° 27' 10.7, -92° 26' 3.69

OVERVIEW MAP



AGENT CONTACT

Looking for land or selling a piece of property can be stressful or overbearing, but not if you're working with the right agent. Bjorn Wilkerson is all about making sure each client has an enjoyable experience from start to finish. A lifelong lover of the outdoors, Bjorn has a background in agriculture and a passion for all things outdoors. This includes hunting, fishing, camping, traveling, hiking, and land management, not to mention his personal favorites: spring turkey hunting, whitetail hunting, and bowfishing. Born in West Plains, Missouri, Bjorn attended Couch High School and graduated from Missouri State University—Springfield with a degree in Wildlife Management. Before coming to Midwest Land Group, he worked in agriculture and operations with Archer Daniels Midland (ADM), a human and animal nutrition company specializing in agricultural origination and processing, where he worked his way around the company, serving in a variety of positions, everything from trainee, plant manager, and recruiter to new manager development specialist and continuous improvement practitioner. Being a service to someone looking for hunting or farming property is what drives Bjorn. He wants each experience to not only be enjoyable, but seamless as well. If you're in the market to sell or buy land, give Bjorn a call.



BJORN WILKERSON,
LAND AGENT

417.233.1243

BWilkerson@MidwestLandGroup.com



MidwestLandGroup.com

This property is being offered by Midwest Land Group, LLC. 913.674.8010. All information provided by Midwest Land Group, LLC or their agents was acquired from sources deemed accurate and reliable, however we do not warrant its accuracy or completeness. Midwest Land Group, LLC assumes no liability for error, omission or investment results. Midwest Land Group, LLC. Licensed in Alabama, Arkansas, Illinois, Indiana, Iowa, Kansas, Kentucky, Louisiana, Minnesota, Mississippi, Missouri, Montana, Nebraska, Ohio, Oklahoma, South Dakota, Tennessee, Texas, Wisconsin, and Wyoming.