

MIDWEST LAND GROUP PRESENTS

54.6 ACRES IN

SAINT TAMMANY PARISH LOUISIANA



MidwestLandGroup.com

MIDWEST LAND GROUP IS HONORED TO PRESENT

MAJESTIC TIMBER TRACT AND LOCATION WRAPPED INTO ONE PACKAGE

Located just minutes outside of downtown Covington, Louisiana, this 54.6 +/- acre timber tract has so much to offer. If timber investment is your interest, it has it; if wildlife is your passion, it has it; if the words peace and quiet resonate with you, it has it. Gentle sloping terrain

starts with picturesque views of mature timber and ends in an old oak slough lined with majestic oaks and pines that stand the test of time. This property is a blank canvas to create your own masterpiece of rural country living while only minutes from big city life.

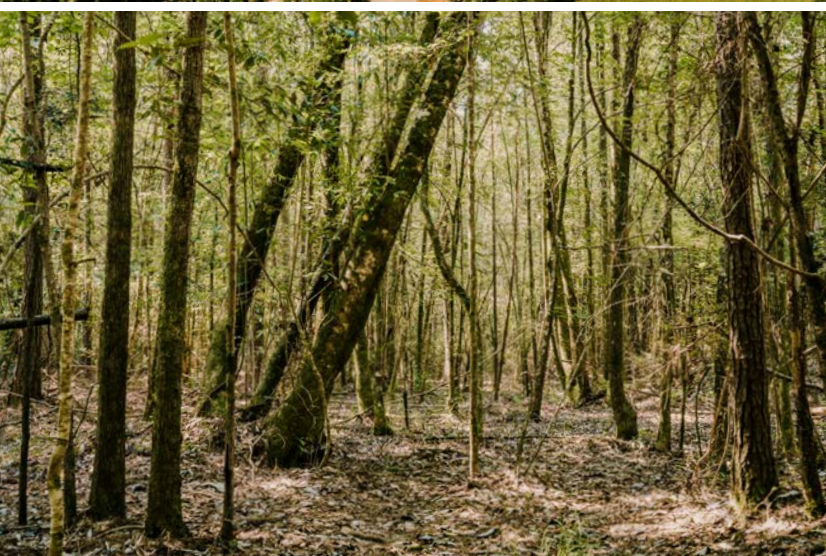


PROPERTY FEATURES

PRICE: **\$414,960** | PARISH: **SAINT TAMMANY** | STATE: **LOUISIANA** | ACRES: **54.6**

- Mature timber ready to harvest
- Plenty of wildlife for recreational use
- Country living minutes from big city life
- Paved road access
- Utilities at the road
- Perfect for a private home site
- 10 minutes from downtown, Covington, Louisiana
- 45 minutes to Hammond, Louisiana
- 1 hour from downtown New Orleans, Louisiana
- 1 hour and 25 minutes from Baton Rouge, Louisiana

MATURE TIMBER



PAVED ROAD ACCESS



SIGNS OF WILDLIFE



AERIAL MAP



©2025 AgriData, Inc.



Maps Provided By:



© AgriData, Inc. 2023 www.AgriDataInc.com

Field borders provided by Farm Service Agency as of 5/21/2008.

Boundary Center: 30° 33' 53.19, -90° 0' 36.26

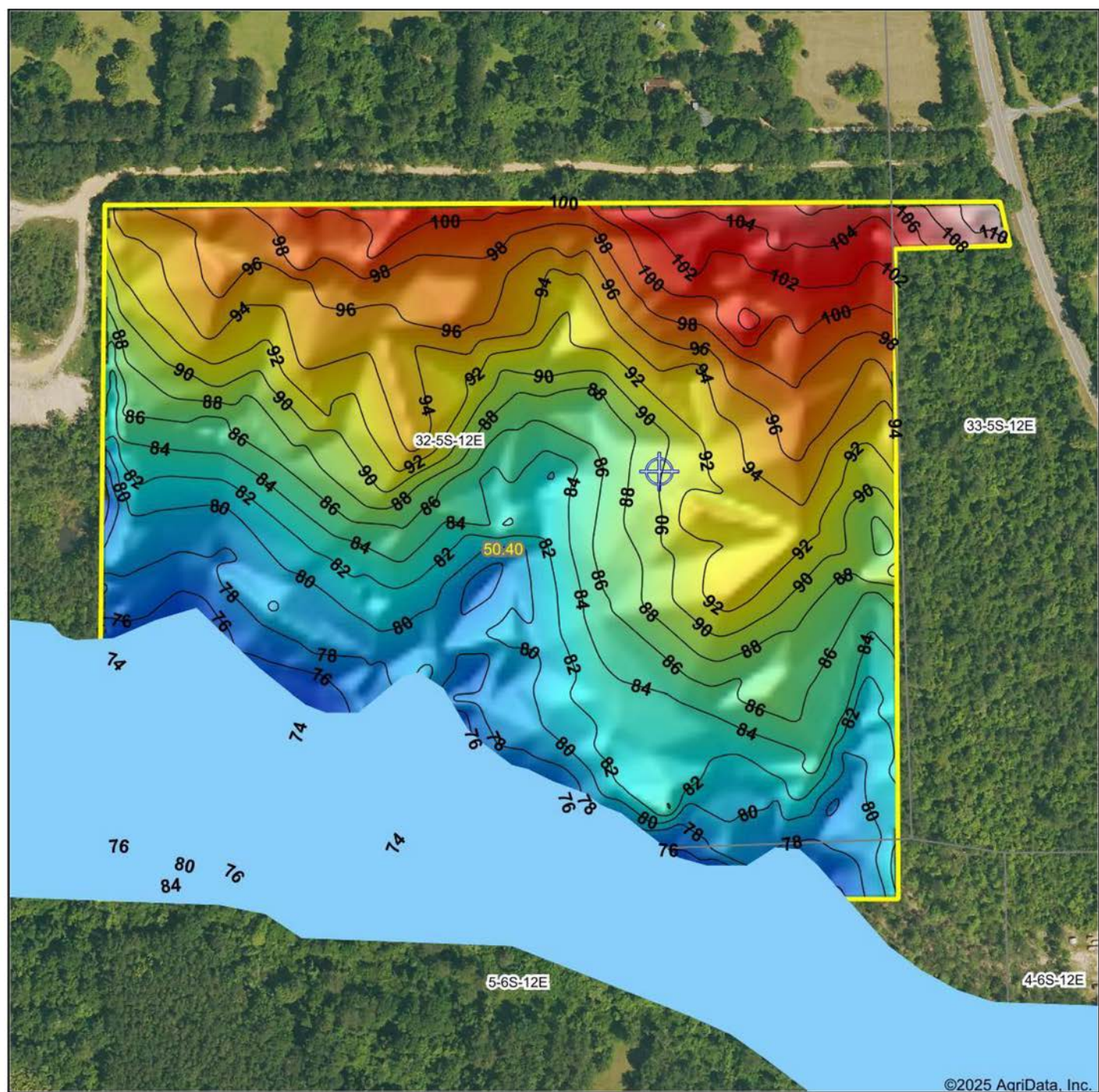
0ft 850ft 1700ft

32-5S-12E
St. Tammany County
Louisiana



8/18/2025

HILLSHADE MAP



Source: USGS 3 meter dem
Interval(ft): 2
Min: 72.0
Max: 112.9
Range: 40.9
Average: 86.2
Standard Deviation: 9.06 ft



32-5S-12E
St. Tammany County
Louisiana

Boundary Center: 30° 33' 53.19, -90° 0' 36.26



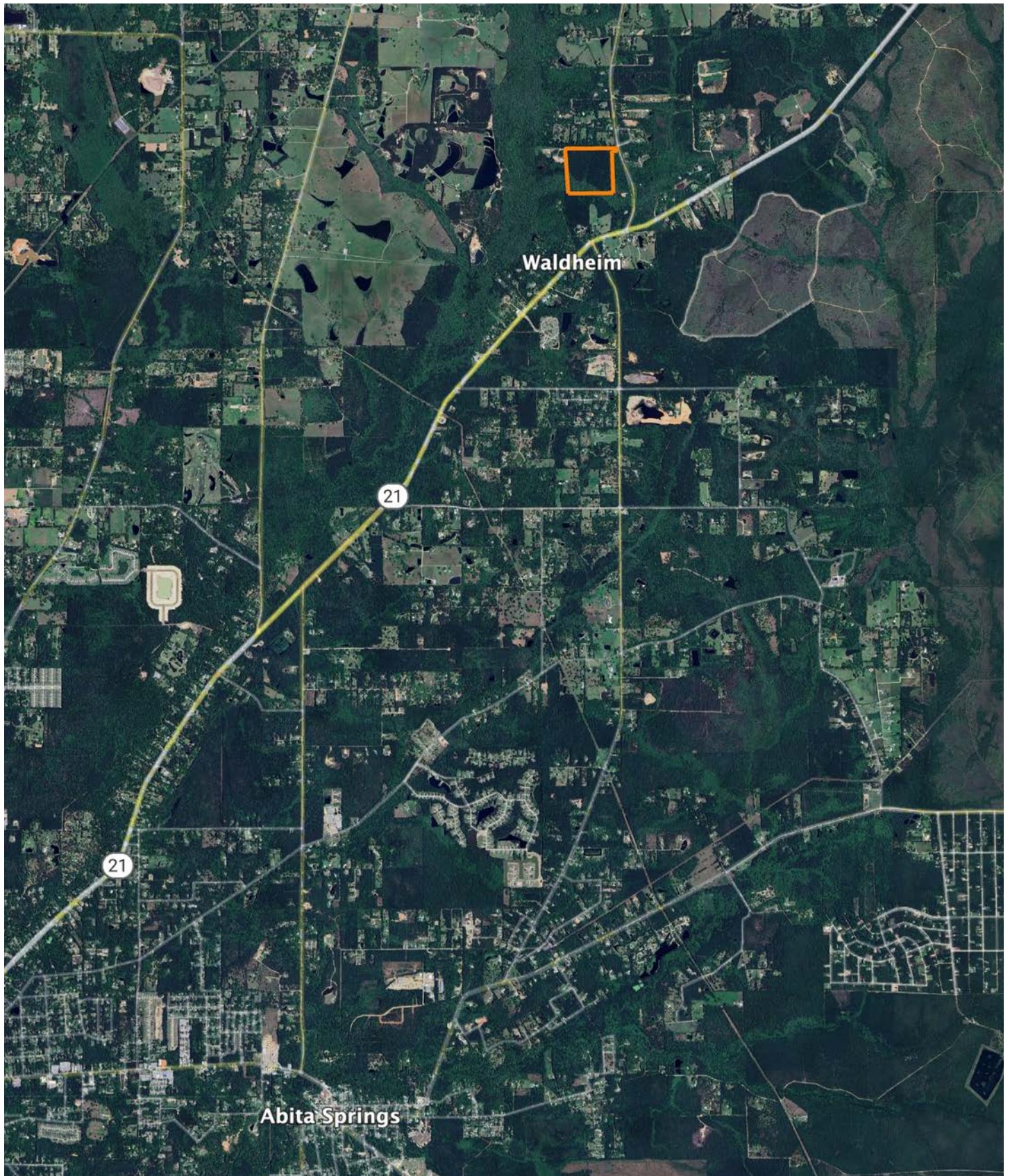
Maps Provided By:

surety
CUSTOMIZED ONLINE MAPPING

© AgriData, Inc. 2023 www.AgriDataInc.com

Field borders provided by Farm Service Agency as of 5/21/2008.

OVERVIEW MAP



AGENT CONTACT

Born and raised in Barataria, Louisiana, Rudy Brown is no stranger to the land, water, and wildlife that define the Gulf South. Now based in Marrero, Rudy brings decades of real-world experience in real estate, contracting, and outdoor living to his role as a Land Agent with Midwest Land Group. A lifelong hunter, fisherman, and outdoorsman, Rudy has spent years exploring and managing properties throughout Louisiana and Mississippi—including his own retreat in Port Gibson, MS.

Rudy's foundation in real estate began early, growing up as the son of a developer. He launched his career as a licensed real estate agent and contractor, where he learned the ins and outs of land acquisition, development, and sales. With a career rooted in sales and negotiation, Rudy brings unmatched professionalism, deep local knowledge, and an outdoorsman's intuition to every client interaction.

Known for his integrity, community service, and personalized approach, Rudy views land not just as property—but as a place where dreams are built. Whether you're buying your first hunting tract or selling a family farm, Rudy's commitment is simple: to help you find your sanctuary. He's not just selling land—he's helping clients find the place they'll never want to leave.



RUDY BROWN,

LAND AGENT

985.231.3129

RBrown@MidwestLandGroup.com



MidwestLandGroup.com

This property is being offered by Midwest Land Group, LLC. 913.674.8010. All information provided by Midwest Land Group, LLC or their agents was acquired from sources deemed accurate and reliable, however we do not warrant its accuracy or completeness. Midwest Land Group, LLC assumes no liability for error, omission or investment results. Midwest Land Group, LLC. Licensed in Alabama, Arkansas, Illinois, Indiana, Iowa, Kansas, Kentucky, Louisiana, Minnesota, Mississippi, Missouri, Montana, Nebraska, Ohio, Oklahoma, South Dakota, Tennessee, Texas, Wisconsin, and Wyoming.