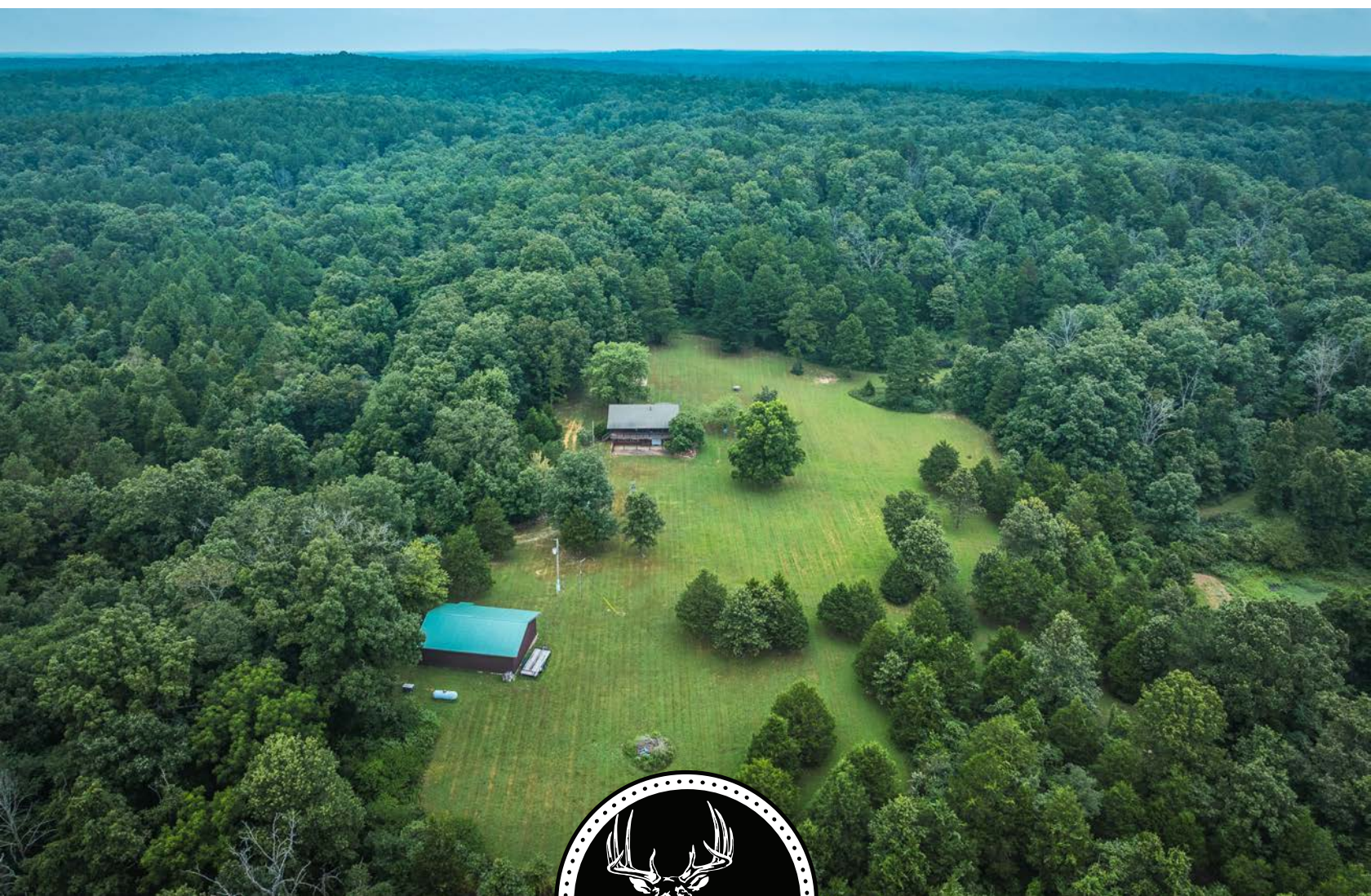


MIDWEST LAND GROUP PRESENTS

160 ACRES IN

SHANNON COUNTY MISSOURI

3292 COUNTY ROAD 625, BIRCH TREE, MO 65438



MidwestLandGroup.com

MIDWEST LAND GROUP IS HONORED TO PRESENT

CABIN ON 160 ACRES BORDERING NATIONAL FOREST - PRIVATE, PEACEFUL, AND FULL OF POTENTIAL

If you're looking for space, privacy, and a strong connection to the land, this 160 +/- acre property in Shannon County, Missouri, offers all that and more. Surrounded on two sides by the Mark Twain National Forest, this is a rare opportunity to own a property with direct access to thousands of acres of public land—ideal for hunting, hiking, or simply enjoying the beauty of the Ozarks.

The landscape is a mix of mature hardwood timber with a few small open areas perfect for food plots. Two small ponds provide a reliable water source for wildlife, making this a natural magnet for deer, turkey, and other native species.

Tucked into a clearing at the heart of the property is a comfortable three-bedroom, two-bath cabin with a full walkout basement—partially finished and ready for your

ideas. A covered front porch overlooks a peaceful, park-like setting, offering a perfect place to relax and take in the quiet.

A 30'x50' detached garage/workshop provides plenty of storage and workspace, while a propane backup generator ensures you're covered in any weather. Though the setting is remote and beautifully secluded, the property is easily accessible by a well-maintained county road that leads to a private drive through the National Forest and into the property, offering the best of both worlds: privacy without isolation.

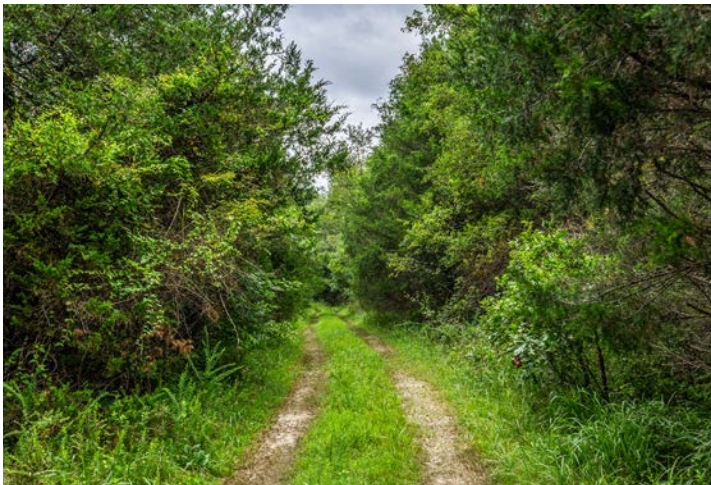
Whether you're seeking a hunting basecamp, a quiet homestead, or a weekend escape, this property delivers a rare combination of natural beauty, practical improvements, and direct access to public land right outside your door.



PROPERTY FEATURES

PRICE: **\$670,000** | COUNTY: **SHANNON** | STATE: **MISSOURI** | ACRES: **160**

- Borders Mark Twain National Forest
- Charming 3 bed, 2 bath cabin
- Great hunting
- Mature hardwood timber
- Detached workshop
- Propane generator
- Good access
- Secluded and private
- Park-like setting
- Proximity to the current and Jacks Fork rivers
- 30 minutes to Eminence, MO



CHARMING 3 BED, 2 BATH CABIN

Tucked into a clearing at the heart of the property is a comfortable three-bedroom, two-bath cabin with a full walkout basement—partially finished and ready for your ideas.



ADDITIONAL INTERIOR PHOTOS



COVERED PORCH

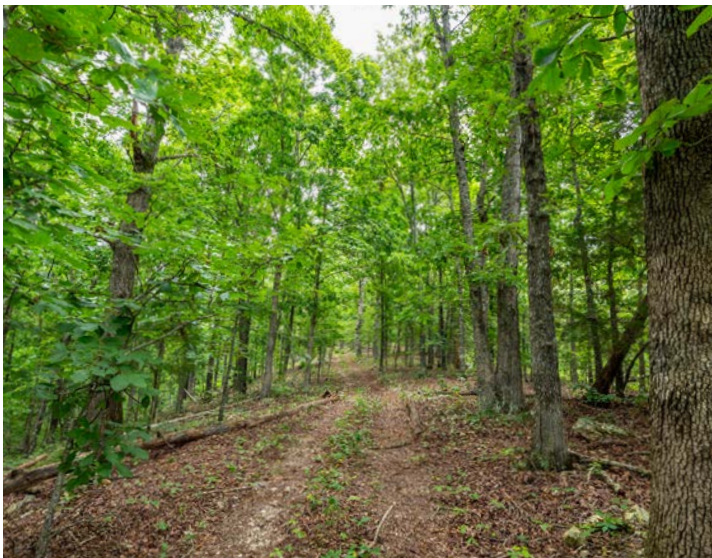


DETACHED WORKSHOP

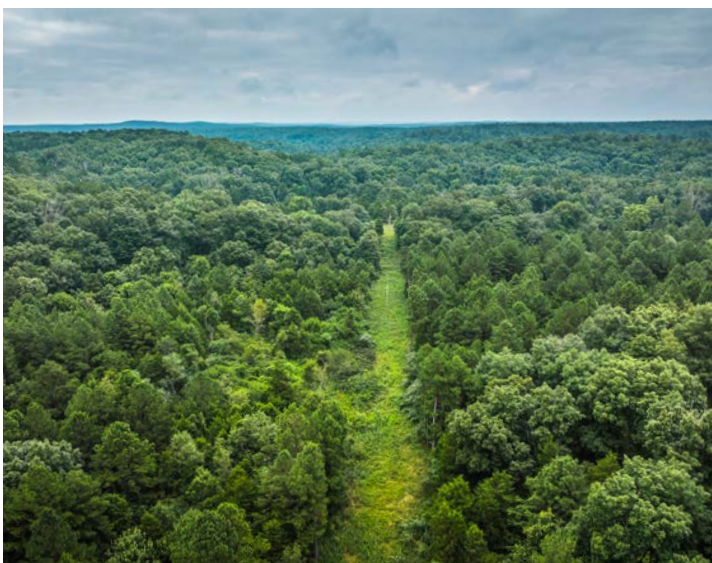
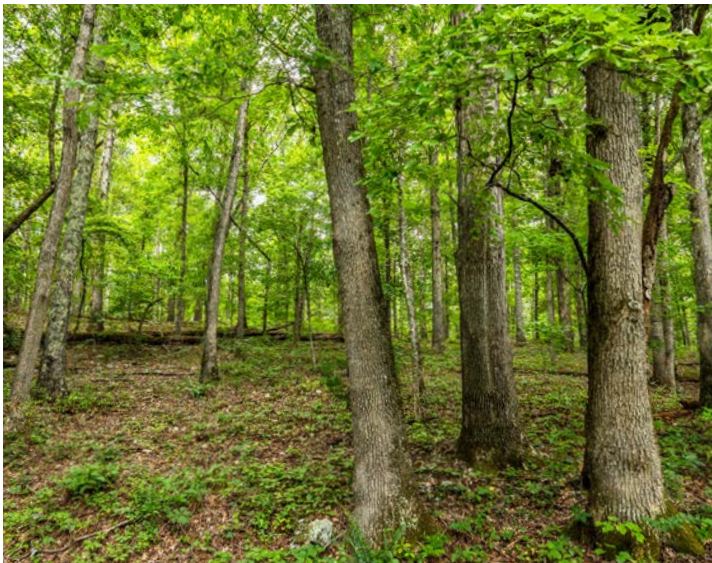


SECLUDED AND PRIVATE

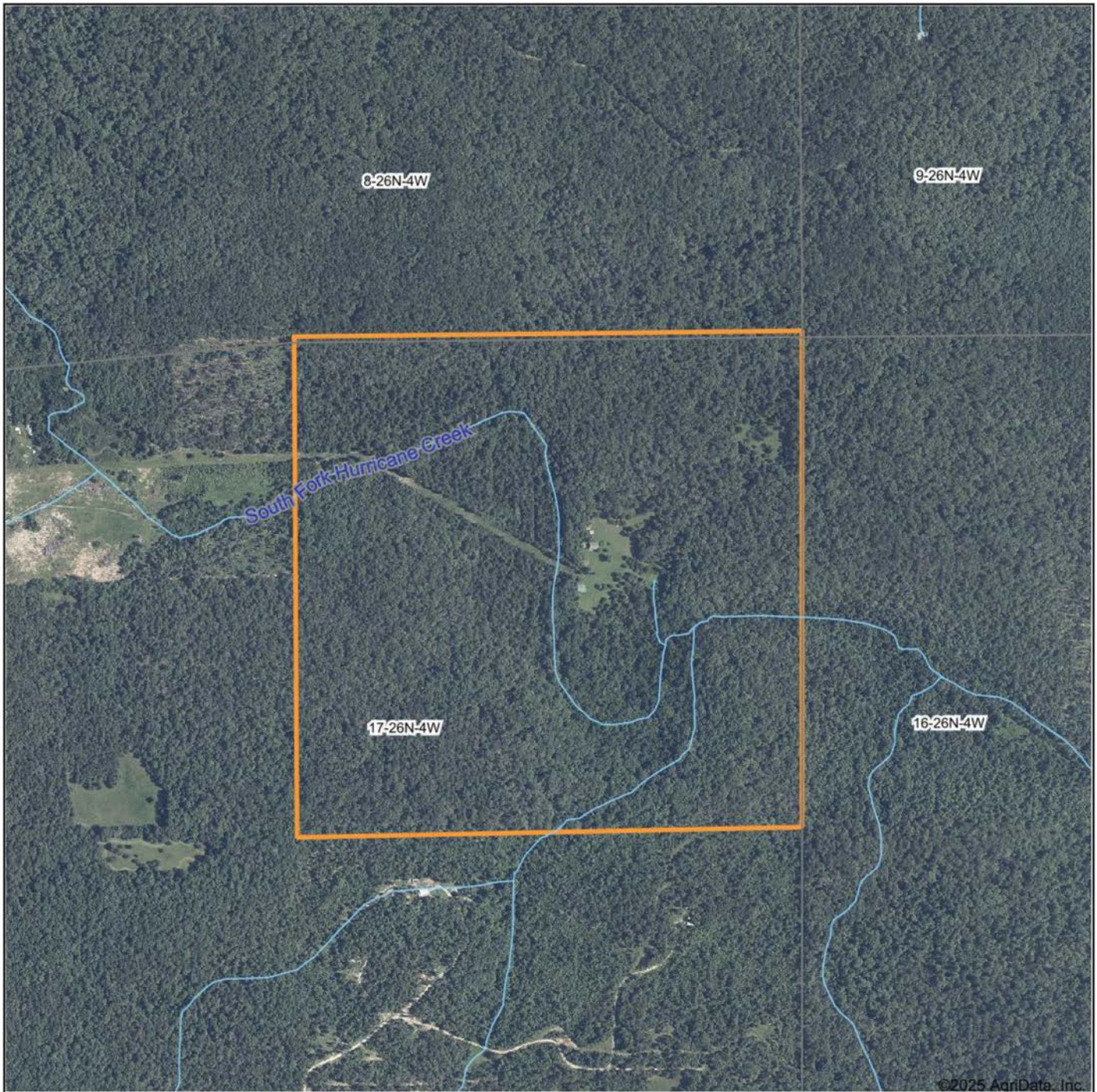
The landscape is a mix of mature hardwood timber with a few small open areas perfect for food plots. Two small ponds provide a reliable water source for wildlife, making this a natural magnet for deer, turkey, and other native species.



ADDITIONAL PHOTOS



AERIAL MAP



©2025 AgriData, Inc.



Maps Provided By:



© AgriData, Inc. 2023 www.AgriDataInc.com

Boundary Center: 36° 55' 33.52, -91° 24' 35.83

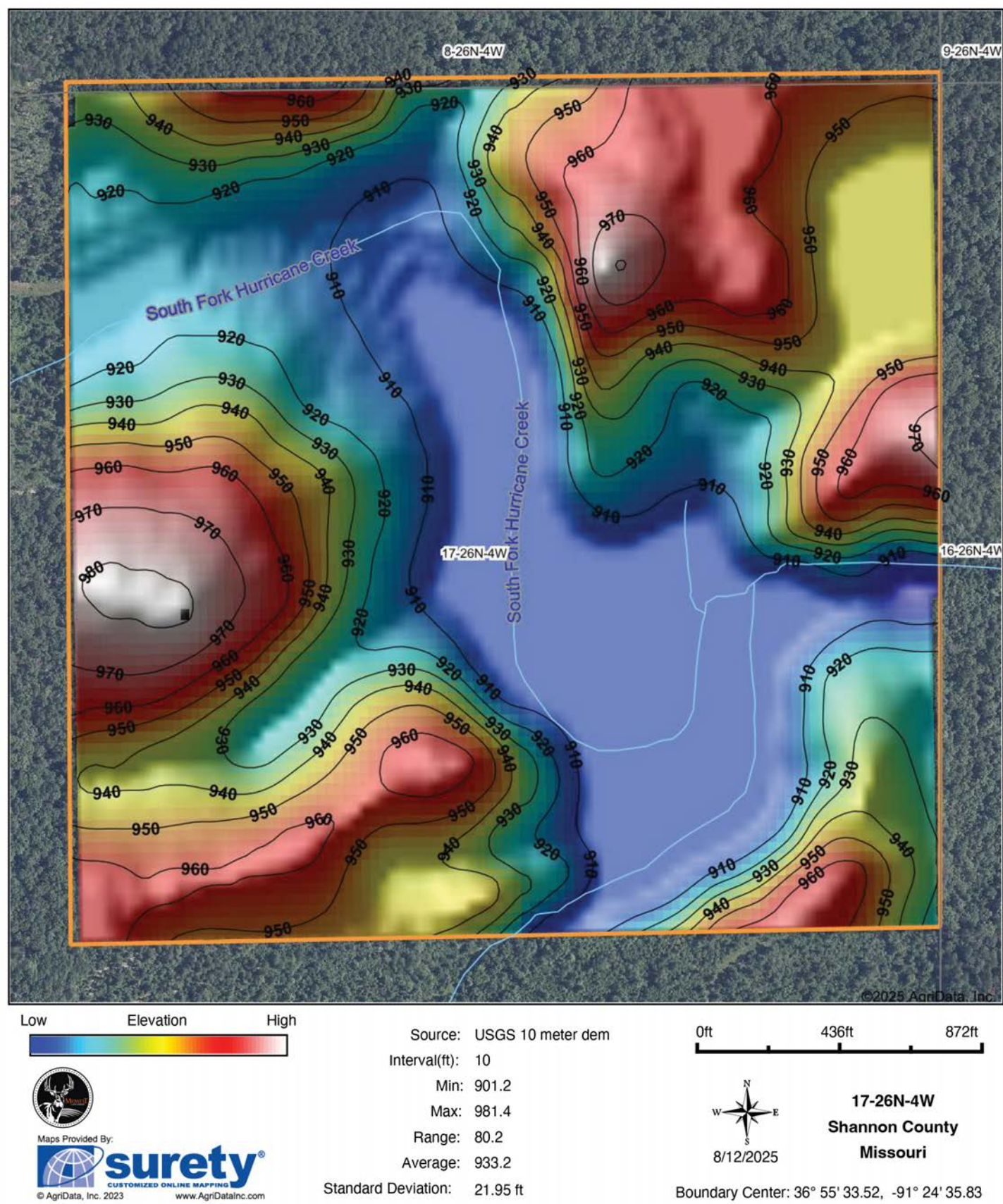
0ft 823ft 1645ft

17-26N-4W
Shannon County
Missouri

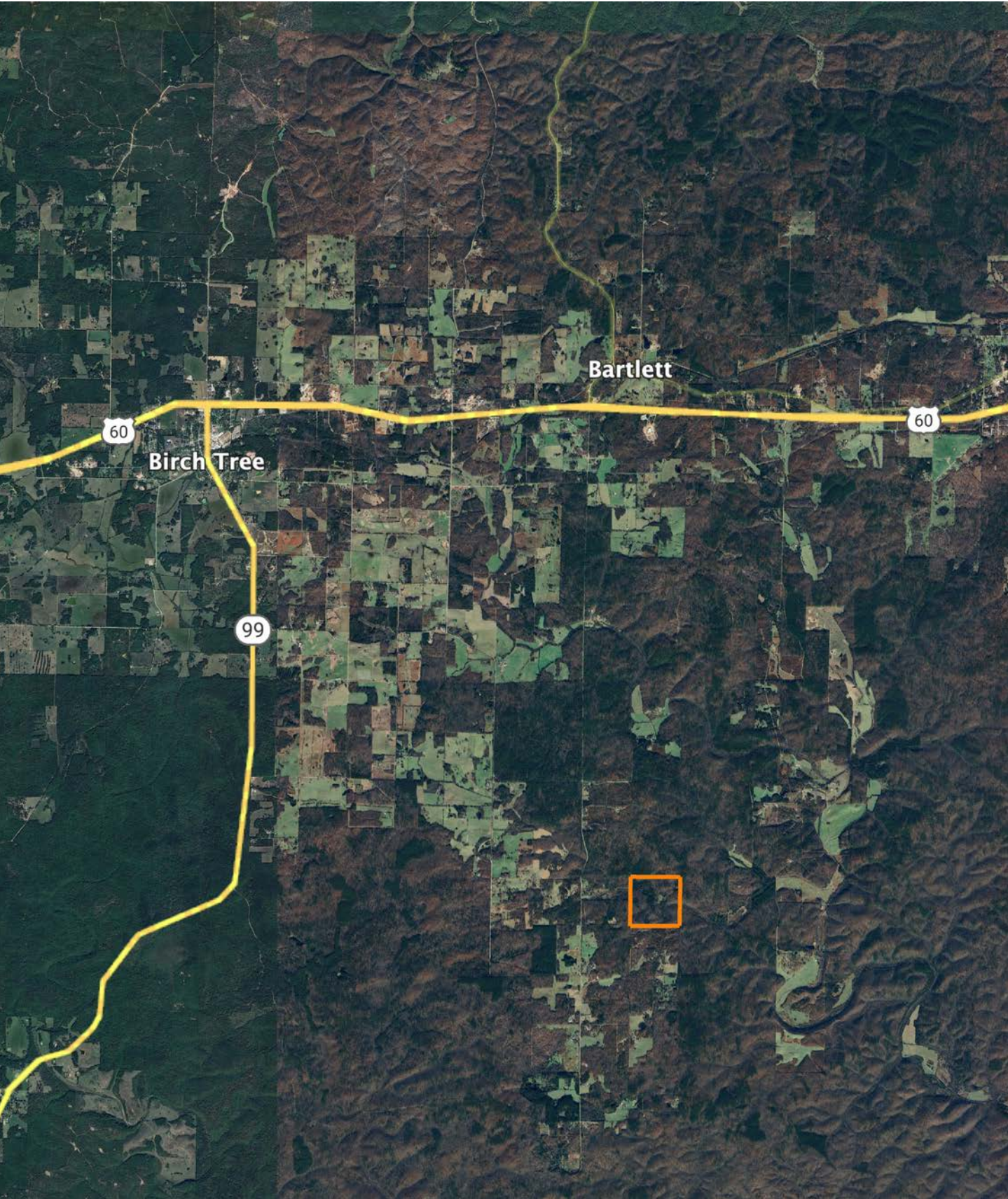


8/12/2025

HILLSHADE MAP



OVERVIEW MAP



AGENT CONTACT

Jason Stokes has an affinity for serving others. With a servant's heart, he loves building trusted relationships with others. An avid outdoorsman and land owner himself, Jason's passion for land is clear. He understands the investment and dedication it takes to improve and grow a piece of property to accomplish one's goals. Ever since he bought and sold his first farm, he's dreamt of helping others do the same. Now, with experience in habitat management and planting food plots on his own farm in northern Missouri, he's committed to bringing that knowledge to his clients.

Born in Festus, Missouri, a suburb of St. Louis, Jason graduated from Festus High School and obtained an Associate's degree in information technology from Jefferson College. He worked as a cyber security sales engineer / information security engineer for many years, consistently exceeding sales goals. In these roles, he honed his skills in solving complex problems for customers while ensuring business operations continued without compromise. He also learned to build a trusted advisor relationship with his customers and developed exceptional interpersonal and relationship-building skills along the way.

When he's not working, Jason enjoys what he's loved his entire life: hunting. He hunts whitetail and turkey and, when he's not hunting, he's usually fishing or spending time outdoors with his family. A member of NWTF, he enjoys mentoring younger hunters and helping build a legacy that has been so important to him. Jason lives in Bloomsdale, MO, with his family.



JASON STOKES, LAND AGENT
636.465.9445
JStokes@MidwestLandGroup.com



MidwestLandGroup.com

This property is being offered by Midwest Land Group, LLC. 913.674.8010. All information provided by Midwest Land Group, LLC or their agents was acquired from sources deemed accurate and reliable, however we do not warrant its accuracy or completeness. Midwest Land Group, LLC assumes no liability for error, omission or investment results. Midwest Land Group, LLC. Licensed in Alabama, Arkansas, Illinois, Indiana, Iowa, Kansas, Kentucky, Louisiana, Minnesota, Mississippi, Missouri, Montana, Nebraska, Ohio, Oklahoma, South Dakota, Tennessee, Texas, Wisconsin, and Wyoming.