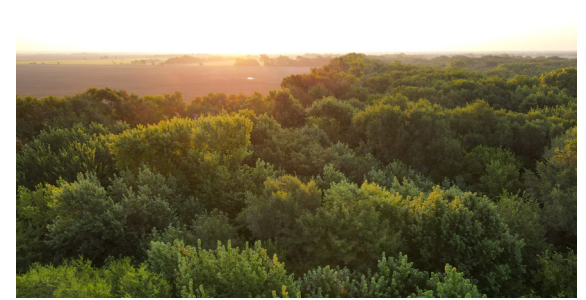


LAND FOR SALE

SUPERB SEDGWICK COUNTY TILLABLE LAND

PRICE: **\$509,799**
COUNTY: **SEDGWICK**
STATE: **KANSAS**
ACRES: **159**



PROPERTY FEATURES

- 148.84 USDA acre base
- PLC wheat yield 40
- Class II & III soils
- Power & fiber optic
- NE1/4 SEC 19-29-4W
- 2024 taxes: \$335.57
- Deer Unit 15
- 9 miles to Cheney, KS
- 17 miles to Conway Springs, KS
- 7.5 miles to Norwich, KS



For more information, contact:

TYLER HEIL, Land Agent

620.869.7083 | THeil@MidwestLandGroup.com

MidwestLandGroup.com



This property is being offered by Midwest Land Group, LLC, 7111 W. 151st Street, Ste. 27, Overland Park, KS 66223, 913.674.8010.
Licensed in AL, AR, IL, IN, IA, KS, KY, LA, MN, MS, MO, MT, NE, OH, OK, SD, TN, TX, WI, and WY.