

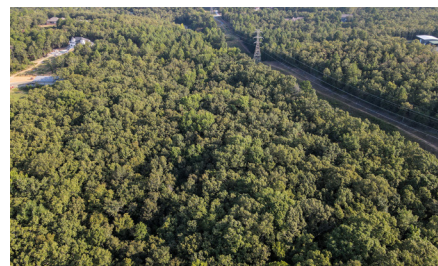
LAND FOR SALE

SECLUDED ACREAGE MINUTES FROM METRO



PROPERTY FEATURES

- 23.7 +/- acres
- Numerous build sites
- Utilities on the property
- Mature hardwood mix
- Tons of wildlife
- Easement access
- Great topography
- Pond
- 5 miles to Jacksonville
- 5 miles to Sherwood



For more information, contact:

CALYN ZACHARY, Land Agent

501.483.5007 | CZachary@MidwestLandGroup.com

MidwestLandGroup.com

BUYERS, SELLERS, AND LAND – CONNECTED

This property is being offered by Midwest Land Group, LLC, 7111 W. 151st Street, Ste. 27, Overland Park, KS 66223, 913.674.8010.
Licensed in AL, AR, IL, IN, IA, KS, KY, LA, MN, MS, MO, MT, NE, OH, OK, SD, TN, TX, WI, and WY.



PRICE: **\$365,000**

COUNTY: **PULASKI**

STATE: **ARKANSAS**

ACRES: **23.7**

