

MIDWEST LAND GROUP PRESENTS

20 ACRES IN

OUTAGAMIE COUNTY WISCONSIN



MidwestLandGroup.com

MIDWEST LAND GROUP IS HONORED TO PRESENT

FOX VALLEY HIDEAWAY - 20 ACRES OF WOODS, WILDLIFE, AND WATER

Welcome to your own 20-acre slice of nature in the Town of Freedom, perfectly situated in the heart of Wisconsin's thriving Fox Valley. With blacktop road frontage and just 3 miles from I-41, this property offers the rare combination of peaceful seclusion and unbeatable convenience, putting you within easy reach of Appleton, Green Bay, and the greater Fox Cities.

This parcel is a true outdoor enthusiast's dream. The property is made up of gently rolling terrain surrounded by towering pines, young maples, and a healthy mix of other hardwood and softwood trees that create a rich, diverse habitat for wildlife. Deer and turkey love to call this place home, and with access to two ponds

on the property, you'll enjoy incredible recreational opportunities right out your back door—whether it's hunting, hiking, or simply soaking in the sights and sounds of nature.

Whether you're looking to build your forever home, set up a weekend retreat, or secure a private hunting spot, this property has everything you need. It's a rare chance to own acreage that offers the best of both worlds in the Fox Valley.

Give me a call today to set up your private showing and see everything that this place has to offer!



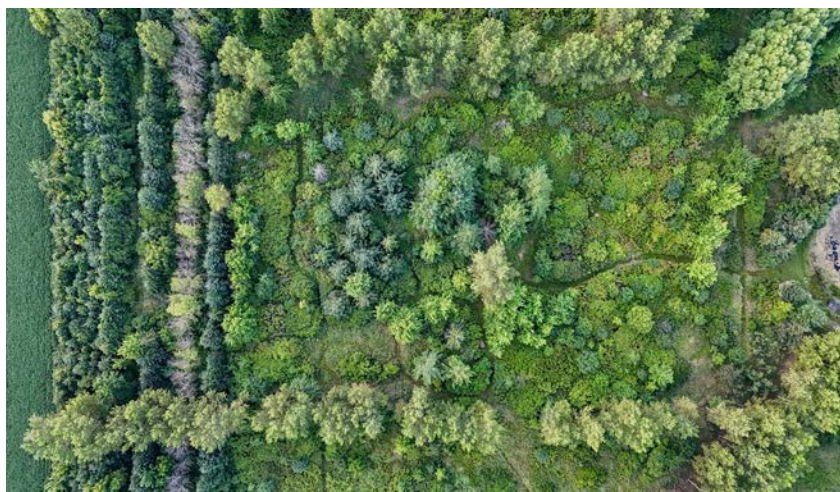
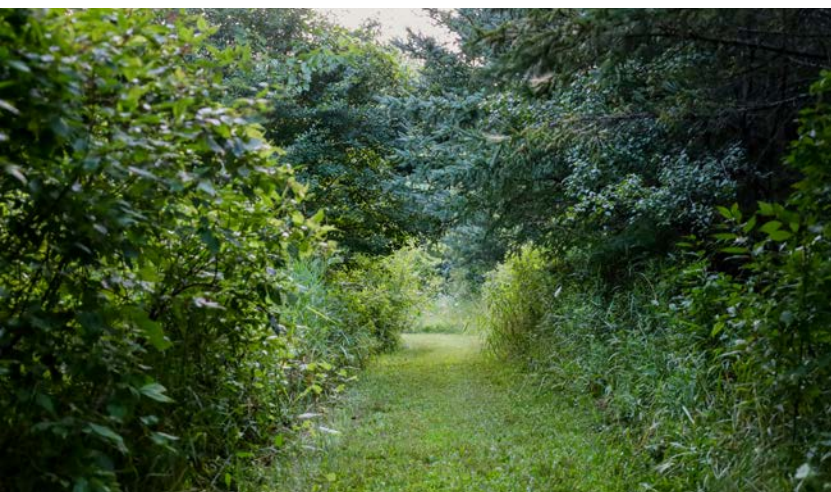
PROPERTY FEATURES

PRICE: **\$485,000** | COUNTY: **OUTAGAMIE** | STATE: **WISCONSIN** | ACRES: **20**

- Town of Freedom
- Blacktop road frontage
- Buildable 20-acre parcel
- Surrounded by pines, young maples, and mixed hardwood/softwood trees
- Excellent deer and turkey hunting opportunities
- Access to two ponds on the property
- Diverse terrain
- Just 3 miles from I-41
- Peaceful and secluded setting
- Perfect mix of recreation and convenience in the Fox Valley



BUILDABLE 20-ACRE PARCEL



SURROUNDED BY TREES



BLACKTOP ROAD FRONTAGE



ACCESS TO TWO PONDS



EXCELLENT HUNTING OPPORTUNITIES



AERIAL MAP



©2025 AgriData, Inc.



Maps Provided By:



© AgriData, Inc. 2023

www.AgriDataInc.com

Boundary Center: 44° 19' 49.09, -88° 16' 51.8

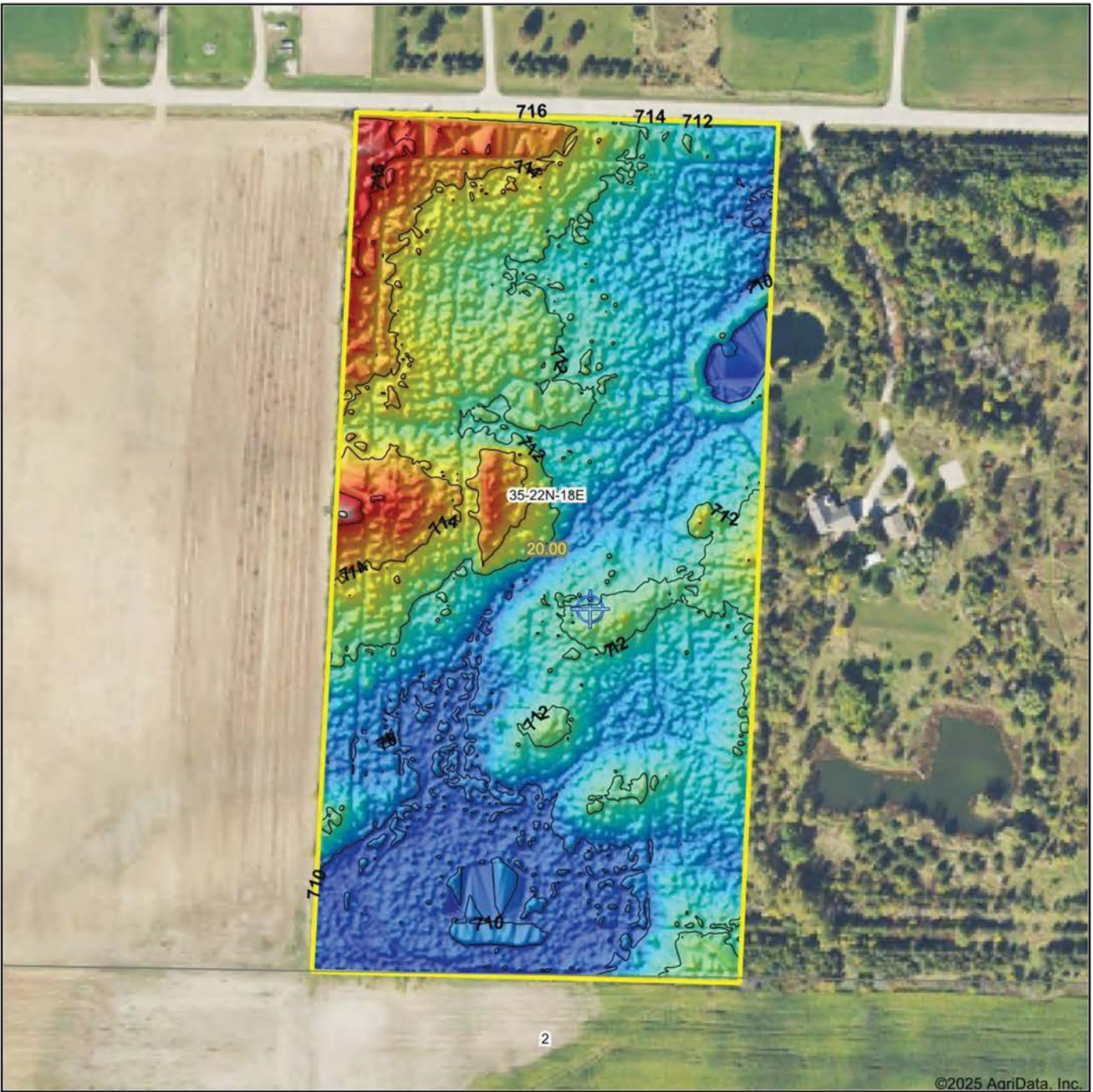
35-22N-18E
Outagamie County
Wisconsin

0ft 274ft 548ft

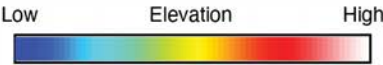


7/14/2025

HILLSHADE MAP

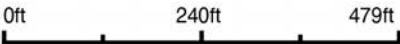


©2025 AgriData, Inc.



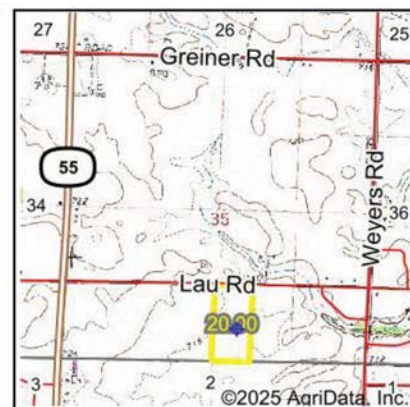
Maps Provided By:
surety
CUSTOMIZED ONLINE MAPPING
© AgriData, Inc. 2023 www.AgriDataInc.com

Source: USGS 1 meter dem
Interval(ft): 2
Min: 709.0
Max: 718.5
Range: 9.5
Average: 711.7
Standard Deviation: 1.64 ft



35-22N-18E
Outagamie County
Wisconsin
7/14/2025
Boundary Center: 44° 19' 49.09, -88° 16' 51.8

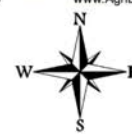
WETLANDS MAP



State: **Wisconsin**
 Location: **35-22N-18E**
 County: **Outagamie**
 Township: **Freedom**
 Date: **7/14/2025**



Maps Provided By:

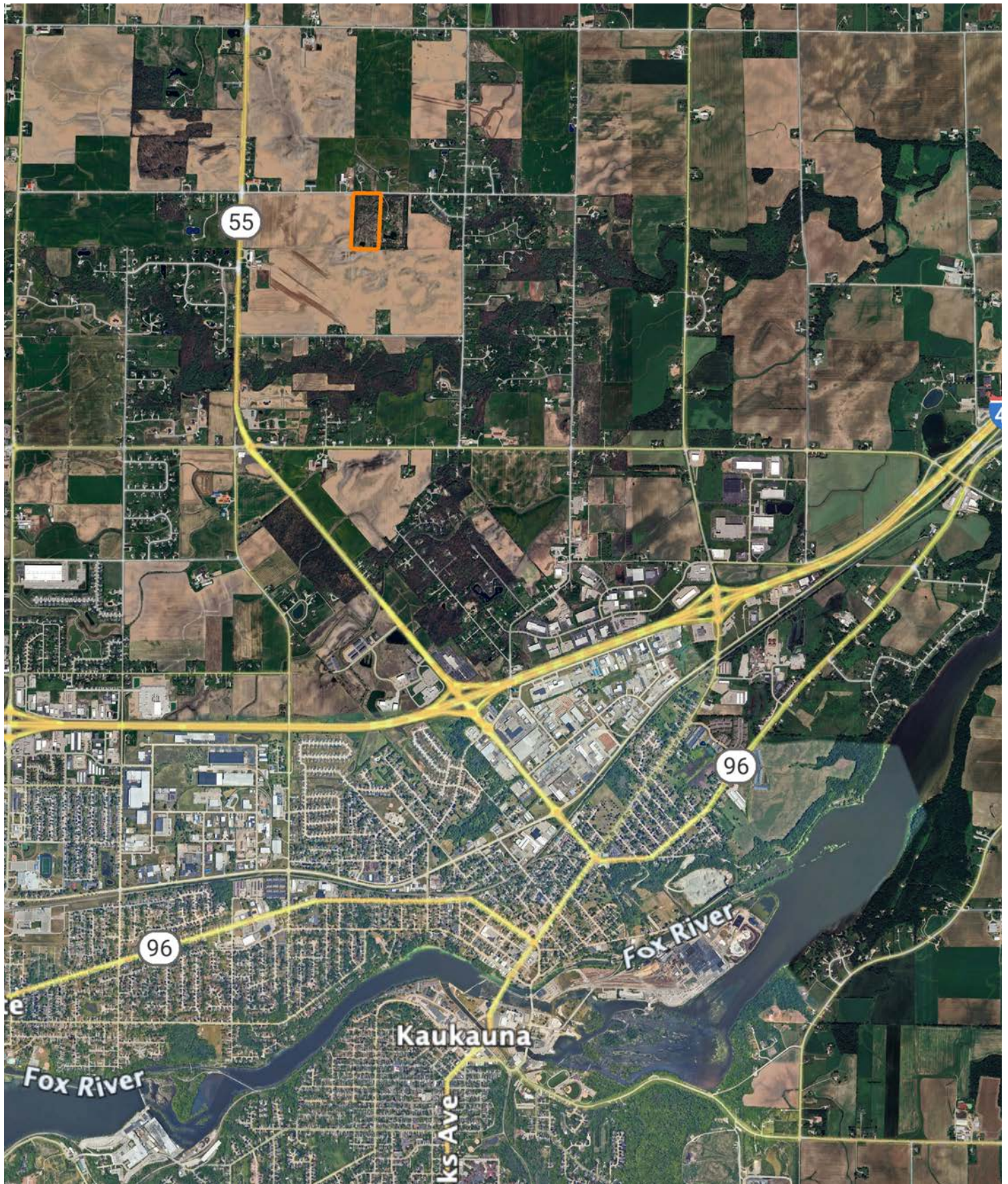


0ft 393ft 785ft

Classification Code	Type	Acres
PEM1A	Freshwater Emergent Wetland	2.40
PUBHx	Freshwater Pond	0.37
PEM1Af	Freshwater Emergent Wetland	0.00
Total Acres		2.77

Data Source: National Wetlands Inventory website. U.S. DoI, Fish and Wildlife Service, Washington, D.C. <http://www.fws.gov/wetlands/>

OVERVIEW MAP



AGENT CONTACT

Jordan is a dedicated, hard-working land agent passionate about helping clients navigate the land market in Southern Wisconsin. Growing up in Waukesha County, Jordan has a deep appreciation for the area's unique charm and potential. Ever since he could put on his own boots, Jordan has been hunting and helping manage his family farms in Grant and Crawford counties to produce year after year. Traveling across the different landscapes across the state has allowed him to appreciate all of the landscapes and markets the state has to offer.

Graduating from Marquette University with his Master's in Management and playing 5 years of Division I lacrosse has instilled the importance of teamwork into his approach to the real estate business. After spending 2 years at the Midwest Land Group office helping over 100 agents across 13 states build their businesses, he is ready to get back to supporting the state that holds such a large place in his heart. Being a part of hundreds of transactions through the home office gave Jordan a deep accountability in the fact that all parties involved in a transaction must fully own their roles for the best outcome possible and is never afraid to go above and beyond for his clients to ensure they achieve their goals.

In his spare time, Jordan enjoys spending time with his wife Elaina. They enjoy diving deeper into their faith life through their local church and organizations such as Young Life and FCA. When he isn't spending time with his family, you'll likely find Jordan working out with his friends or spending some time out on the open water fishing. If you're in the market for recreational, farmland, or investment properties in Wisconsin, be sure to give Jordan a call!



JORDAN SCHMID

LAND AGENT

262.737.8823

JordanSchmid@MidwestLandGroup.com



MidwestLandGroup.com

This property is being offered by Midwest Land Group, LLC. 913.674.8010. All information provided by Midwest Land Group, LLC or their agents was acquired from sources deemed accurate and reliable, however we do not warrant its accuracy or completeness. Midwest Land Group, LLC assumes no liability for error, omission or investment results. Midwest Land Group, LLC. Licensed in Alabama, Arkansas, Illinois, Indiana, Iowa, Kansas, Kentucky, Louisiana, Minnesota, Mississippi, Missouri, Montana, Nebraska, Ohio, Oklahoma, South Dakota, Tennessee, Texas, Wisconsin, and Wyoming.