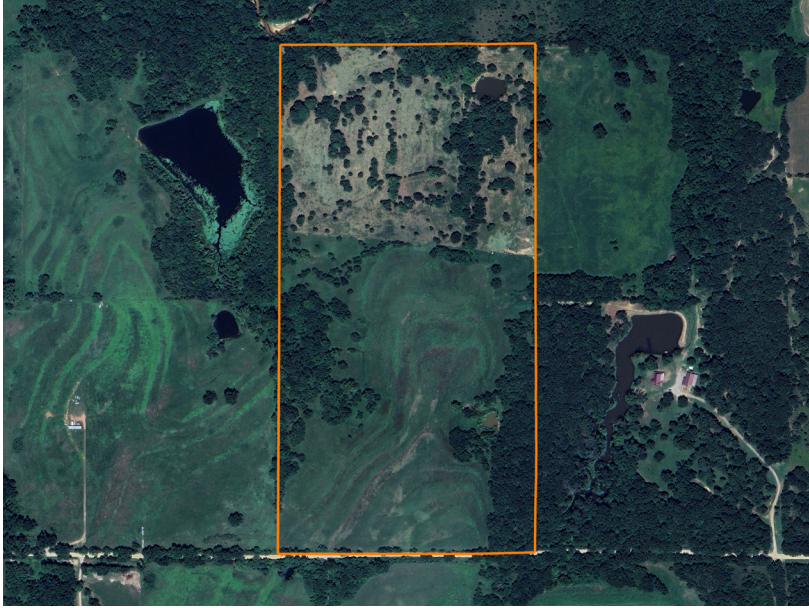


LAND FOR SALE

BUILD, HUNT, RELAX - ALL IN ONE PLACE

PRICE: **\$328,000**
COUNTY: **OKFUSKEE**
STATE: **OKLAHOMA**
ACRES: **80**



PROPERTY FEATURES

- 80 +/- acres of land with an additional 40 +/- acres available for purchase
- Located just ½ mile off a paved road for easy access
- Features a peaceful pond nestled within the property
- Ideal mix of mature timber and open ground for versatile use
- Rolling terrain offers scenic views and development potential
- Renowned area for mature whitetail deer - excellent hunting opportunity
- Perfect for recreation, building, or long-term investment
- Quiet rural charm with proximity to major highways and city amenities

For more information, contact:

MICHAEL GILL, Land Agent

918.399.9333 | MGill@MidwestLandGroup.com

MidwestLandGroup.com



This property is being offered by Midwest Land Group, LLC, 7111 W. 151st Street, Ste. 27, Overland Park, KS 66223, 913.674.8010. Licensed in AL, AR, IL, IN, IA, KS, KY, LA, MN, MS, MO, MT, NE, OH, OK, SD, TN, TX, WI, and WY.

LAND FOR SALE

GORGEOUS 80 ACRE FARM WITH GREAT DEER HUNTING IN BUCHANAN COUNTY

PRICE: **\$267,000**
COUNTY: **BUCHANAN**
STATE: **MISSOURI**
ACRES: **80**



PROPERTY FEATURES

- Prime property to build a home or cabin
- Gorgeous views
- Secluded southern exposure build site
- 25 minutes from I-29 and highway 152
- Well-maintained road only 1/4 mile to asphalt
- Great mix of open pasture and timber
- Beautiful 5 acre lake
- Great hunting
- Strong deer and turkey population
- Fertile soils for hay or row crop production



For more information, contact:

MICHAEL GILL, Land Agent

918.399.9333 | MGill@MidwestLandGroup.com

MidwestLandGroup.com



This property is being offered by Midwest Land Group, LLC, 7111 W. 151st Street, Ste. 27, Overland Park, KS 66223, 913.674.8010. Licensed in AL, AR, IL, IN, IA, KS, KY, LA, MN, MS, MO, MT, NE, OH, OK, SD, TN, TX, WI, and WY.

LAND FOR SALE

GORGEOUS 80 ACRE FARM WITH GREAT DEER HUNTING IN BUCHANAN COUNTY

PRICE: **\$267,000**

COUNTY: **BUCHANAN**

STATE: **MISSOURI**

ACRES: **80**



PROPERTY FEATURES

- Prime property to build a home or cabin
- Gorgeous views
- Secluded southern exposure build site
- 25 minutes from I-29 and highway 152
- Well-maintained road only 1/4 mile to asphalt
- Great mix of open pasture and timber
- Beautiful 5 acre lake
- Great hunting
- Strong deer and turkey population
- Fertile soils for hay or row crop production



For more information, contact:

MICHAEL GILL, Land Agent

918.399.9333 | MGill@MidwestLandGroup.com

MidwestLandGroup.com



This property is being offered by Midwest Land Group, LLC, 7111 W. 151st Street, Ste. 27, Overland Park, KS 66223, 913.674.8010. Licensed in AL, AR, IL, IN, IA, KS, KY, LA, MN, MS, MO, MT, NE, OH, OK, SD, TN, TX, WI, and WY.

LAND FOR SALE

GORGEOUS 80 ACRE FARM WITH GREAT HUNTING IN BUCHANAN COUNTY



PROPERTY FEATURES

- Prime property to build a home or cabin
- Gorgeous views
- Secluded southern exposure build site
- 25 minutes from I-29 and highway 152
- Well-maintained road only 1/4 mile to asphalt
- Great mix of open pasture and timber
- Beautiful 5 acre lake
- Great hunting
- Strong deer and turkey population
- Fertile soils for hay or row crop production



For more information, contact:

MICHAEL GILL, Land Agent

918.399.9333 | MGill@MidwestLandGroup.com

MidwestLandGroup.com BUYERS, SELLERS, AND LAND – CONNECTED

This property is being offered by Midwest Land Group, LLC, 7111 W. 151st Street, Ste. 27, Overland Park, KS 66223, 913.674.8010.
Licensed in AL, AR, IL, IN, IA, KS, KY, LA, MN, MS, MO, MT, NE, OH, OK, SD, TN, TX, WI, and WY.



PRICE: **\$267,000**

COUNTY: **BUCHANAN**

STATE: **MISSOURI**

ACRES: **80**

