

MIDWEST LAND GROUP PRESENTS

164 ACRES IN

NEOSHO COUNTY KANSAS



MidwestLandGroup.com

MIDWEST LAND GROUP IS HONORED TO PRESENT

164 +/- ACRES IN NEOSHO COUNTY, KANSAS

Located near Stark, lies an awesome tract in Neosho County, Kansas. Consisting of 164 +/- total acres, this farm offers a multitude of possibilities. Whether you are looking to add to your current cattle operation, looking for a build site, or to pick up your next hunting tract, this one is a great candidate.

The habitat on this farm is made up of a great mix. The northern portion of the farm has dense timber with 2 ponds and has plenty of pockets that would be great for food plots in the fall. The recreational buyer has plenty of internal timber, field edges, and a few very nice ponds. This area of Neosho County is renowned for producing mature whitetail year after year. The southern portion of

the farm is primarily pasture and a mix of smaller timber, providing a great bedding area for the wildlife. For the cattleman looking to add to their operation, this farm is cross-fenced to provide for rotational grazing, has good fence, and plenty of water for your livestock. If you are looking to build, this property has water and electric at the road and would make for an awesome place to make a home.

This farm has been passed down through generations and hasn't been available for public purchase in almost a century. Don't miss the opportunity! Contact Ben Jacks at (580) 304-9109 to schedule a tour or for more information.

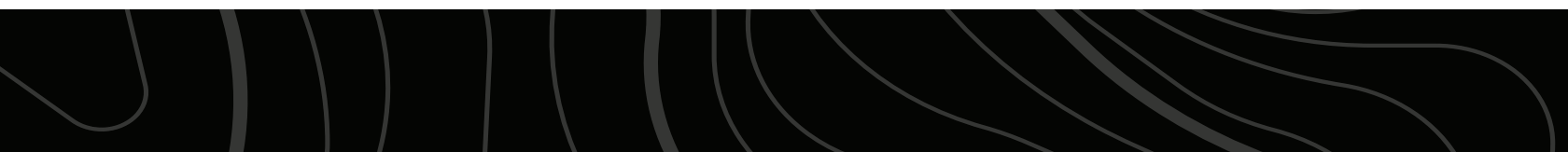
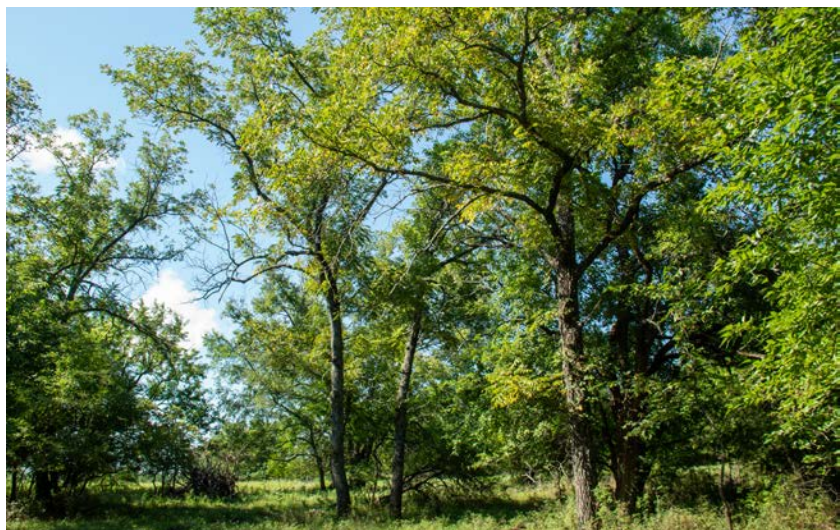
PROPERTY FEATURES

PRICE: **\$570,178** | COUNTY: **NEOSHO** | STATE: **KANSAS** | ACRES: **164**

- 3 ponds
- Timber
- Hay income
- Good fence
- Deer
- Turkey
- Duck
- Crossed-fenced
- Utilities available at road



TIMBER



HAY INCOME



GOOD FENCE & 3 PONDS



AERIAL MAP



Boundary Center: 37° 41' 35.28, -95° 6' 39.07

0ft 862ft 1724ft



Maps Provided By:



© AgriData, Inc. 2023

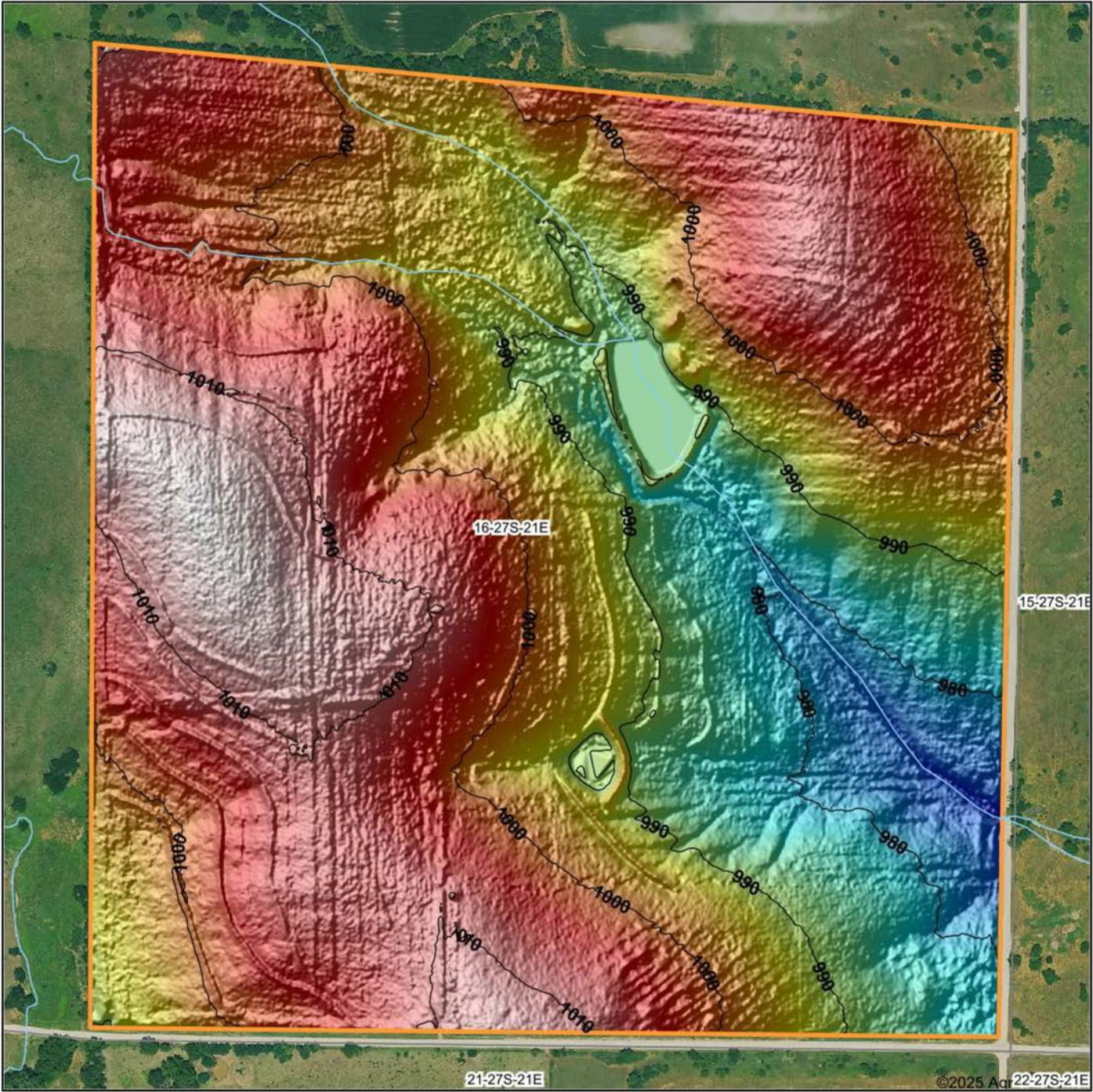
www.AgriDataInc.com

16-27S-21E
Neosho County
Kansas



8/14/2025

HILLSHADE MAP



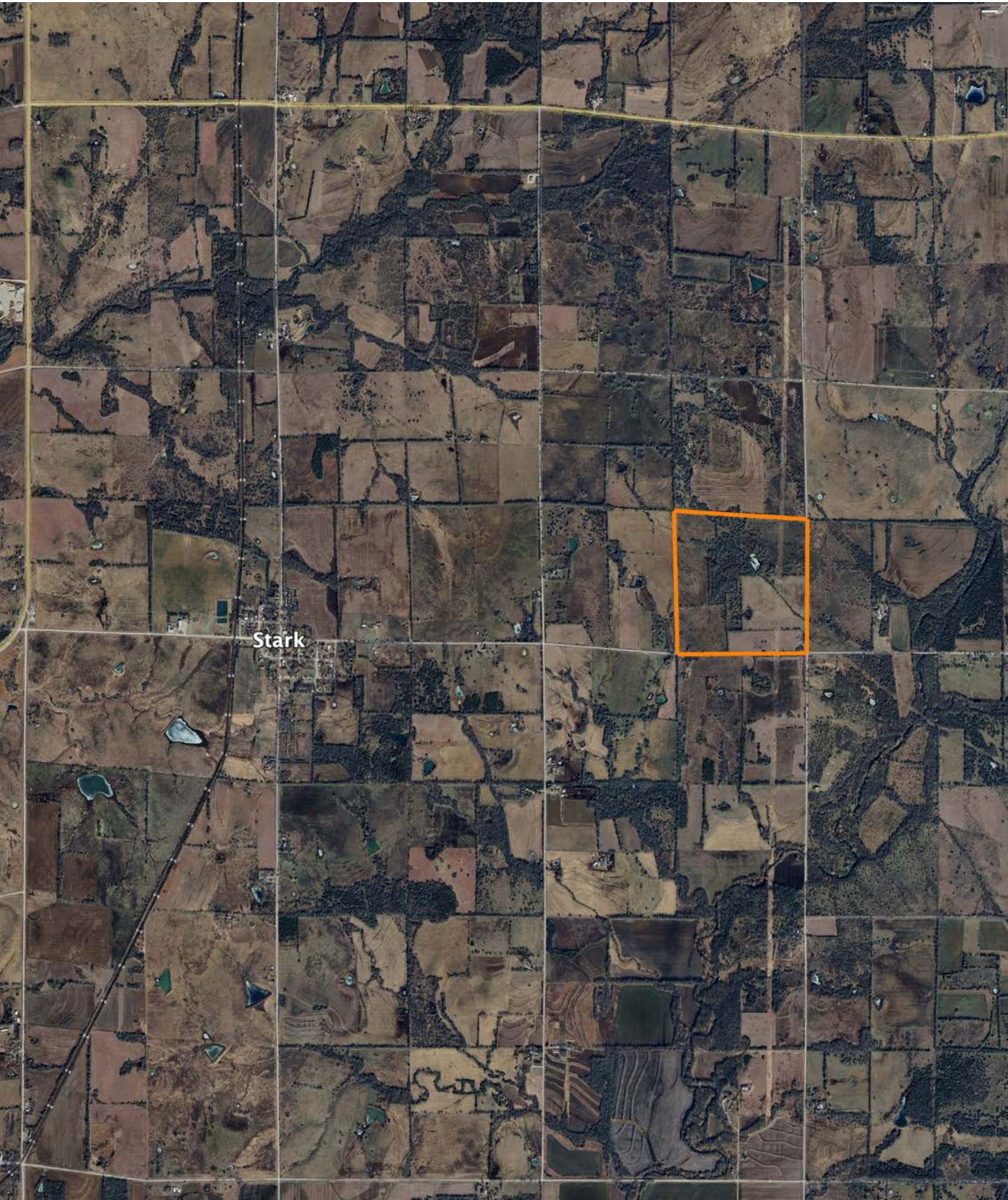
Maps Provided By:
surety
CUSTOMIZED ONLINE MAPPING
© AgriData, Inc. 2023 www.AgriDataInc.com

Source: USGS 1 meter dem
Interval(ft): 10
Min: 971.1
Max: 1,016.0
Range: 44.9
Average: 998.4
Standard Deviation: 9.94 ft



16-27S-21E
Neosho County
Kansas
8/14/2025
Boundary Center: 37° 41' 35.28, -95° 6' 39.07

OVERVIEW MAP



AGENT CONTACT

Ben Jacks has been an avid outdoorsman since he was a boy. His dad would take him and his brother out to hunt and fish every chance he got. Between that and years of bow hunting, Ben learned the process of managing hunting properties. He loves to assess a property and find the potential in a piece of land that someone else might not have seen. Ben was born on a military base in North Carolina and raised in northeast Oklahoma. While in school, he worked on a ranch, where he grew a great respect for farmers and ranchers. He moved to Kansas for college and to continue his baseball career. He went to Neosho County Community College and graduated from Emporia State University, having played baseball at each.

After helping a friend acquire a piece of property, he caught the land real estate bug and hasn't looked back once since. Driven by his passion to help people, Ben offers clients a hard-working, trustworthy, and dedicated agent who will help them throughout the entire process. When he's not working or spending time with family, you can find him out in the woods hunting, fishing, managing hunting properties, or golfing. He's a member of Ducks Unlimited, QDMA, and the First Baptist Church in Chanute, Kansas, where he resides with his son Gunner and two large, active dogs. Contact Ben today to experience the Midwest Land Group difference!



BEN JACKS, LAND AGENT
620.605.3175
BJacks@MidwestLandGroup.com



MidwestLandGroup.com

This property is being offered by Midwest Land Group, LLC. 913.674.8010. All information provided by Midwest Land Group, LLC or their agents was acquired from sources deemed accurate and reliable, however we do not warrant its accuracy or completeness. Midwest Land Group, LLC assumes no liability for error, omission or investment results. Midwest Land Group, LLC. Licensed in Alabama, Arkansas, Illinois, Indiana, Iowa, Kansas, Kentucky, Louisiana, Minnesota, Mississippi, Missouri, Montana, Nebraska, Ohio, Oklahoma, South Dakota, Tennessee, Texas, Wisconsin, and Wyoming.