

LAND FOR SALE

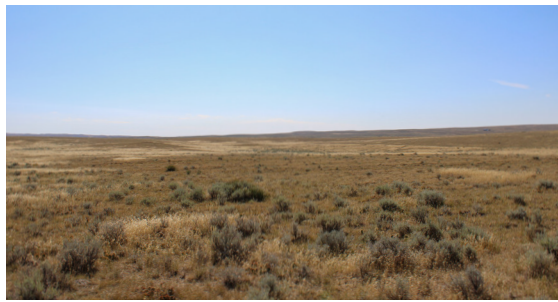
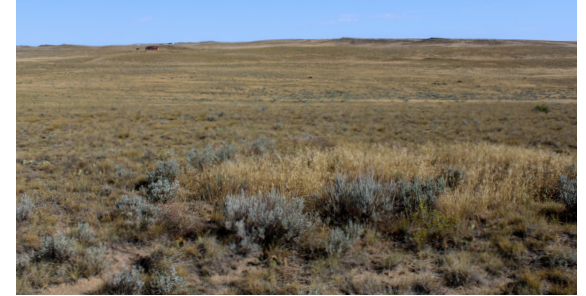
OFF-GRID BUILD SITE ON 39.5 ACRES

PRICE: **\$35,000**

COUNTY: **NATRONA**

STATE: **WYOMING**

ACRES: **39.5**



PROPERTY FEATURES

- Buildable off-grid land
- Existing road access
- Great views
- Native grasses for grazing
- Antelope and mule deer
- Surveyed acreage
- County and privately maintained roads
- Covenant restrictions
- 20 minutes to Casper
- 50 minutes to Medicine Bow National Forest



For more information, contact:

KARL WARD, Land Broker

307.387.9677 | KWard@MidwestLandGroup.com

MidwestLandGroup.com

This property is being offered by Midwest Land Group, LLC, 7111 W. 151st Street, Ste. 27, Overland Park, KS 66223, 913.674.8010. Licensed in AL, AR, IL, IN, IA, KS, KY, LA, MN, MS, MO, MT, NE, OH, OK, SD, TN, TX, WI, and WY.

