

MIDWEST LAND GROUP PRESENTS

20 ACRES IN

MIAMI COUNTY KANSAS



MidwestLandGroup.com

MIDWEST LAND GROUP IS HONORED TO PRESENT

EXTREMELY RARE MIAMI COUNTY TRACT ON PAVED ROAD OFF 359TH & PFLUMM

Secluded, peaceful, and set on a blacktop road - this 20 +/- acre tract sits in a quiet neighborhood just off 359th Street & Pflumm Road in southern Miami County, Kansas. With rare paved access, a private feel, and a beautiful year-round stream running through the property, this is an ideal setting for a custom estate, hobby farm, or weekend retreat.

The landscape blends open areas with a meandering stream and natural cover - perfect for those who value both usable ground and a scenic backdrop.

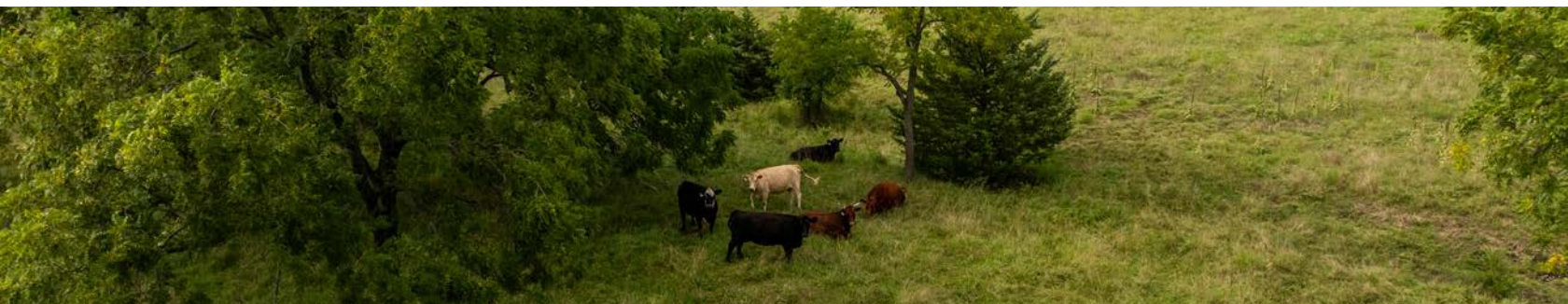
Gentle topography, with large mature trees, provides multiple build-site options and broad views. Privacy-minded buyers will love the low-traffic area and the convenience of being on blacktop from the driveway to town.

Whether you're building now or land-banking for the future, this tract checks the boxes: location, access, water feature, and setting. Bring your builder and vision - there's space here to do it right. Call Donnie Thomas for a private tour.

PROPERTY FEATURES

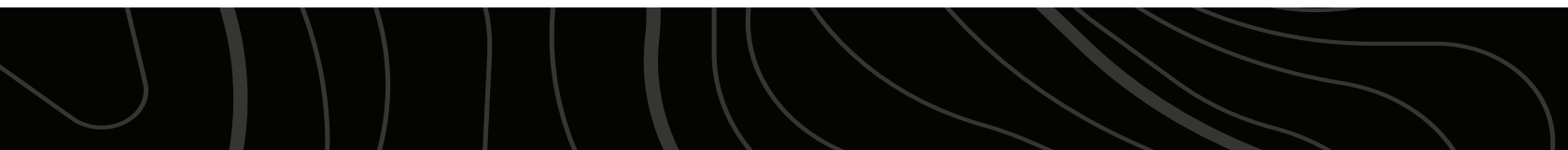
PRICE: **\$216,000** | COUNTY: **MIAMI** | STATE: **KANSAS** | ACRES: **20**

- 20 +/- acres in southern Miami County, KS
- Beautiful year-round stream runs through the property
- Secluded neighborhood with blacktop frontage (off 359th St & Pflumm Rd)
- Multiple potential build sites: attractive estate setting
- Space for shop/barn, livestock, or equestrian use
- Quiet, low-traffic area: great privacy.
- Strong candidate for long-term investment or immediate build
- Utilities at the road, please verify
- Lots of wildlife, good hunting potential
- Showing by appointment only



MULTIPLE POTENTIAL BUILD SITES

With rare paved access, a private feel, and a beautiful year-round stream running through the property, this is an ideal setting for a custom estate, hobby farm, or weekend retreat.



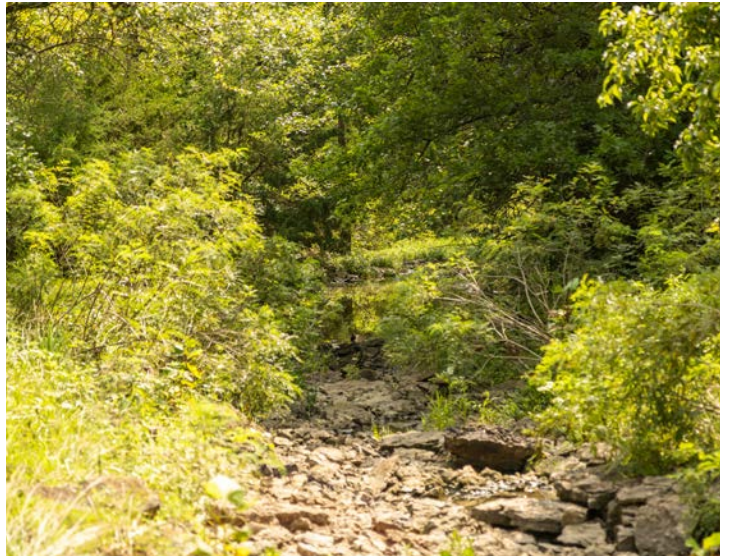
BLACKTOP FRONTAGE



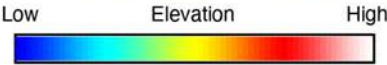
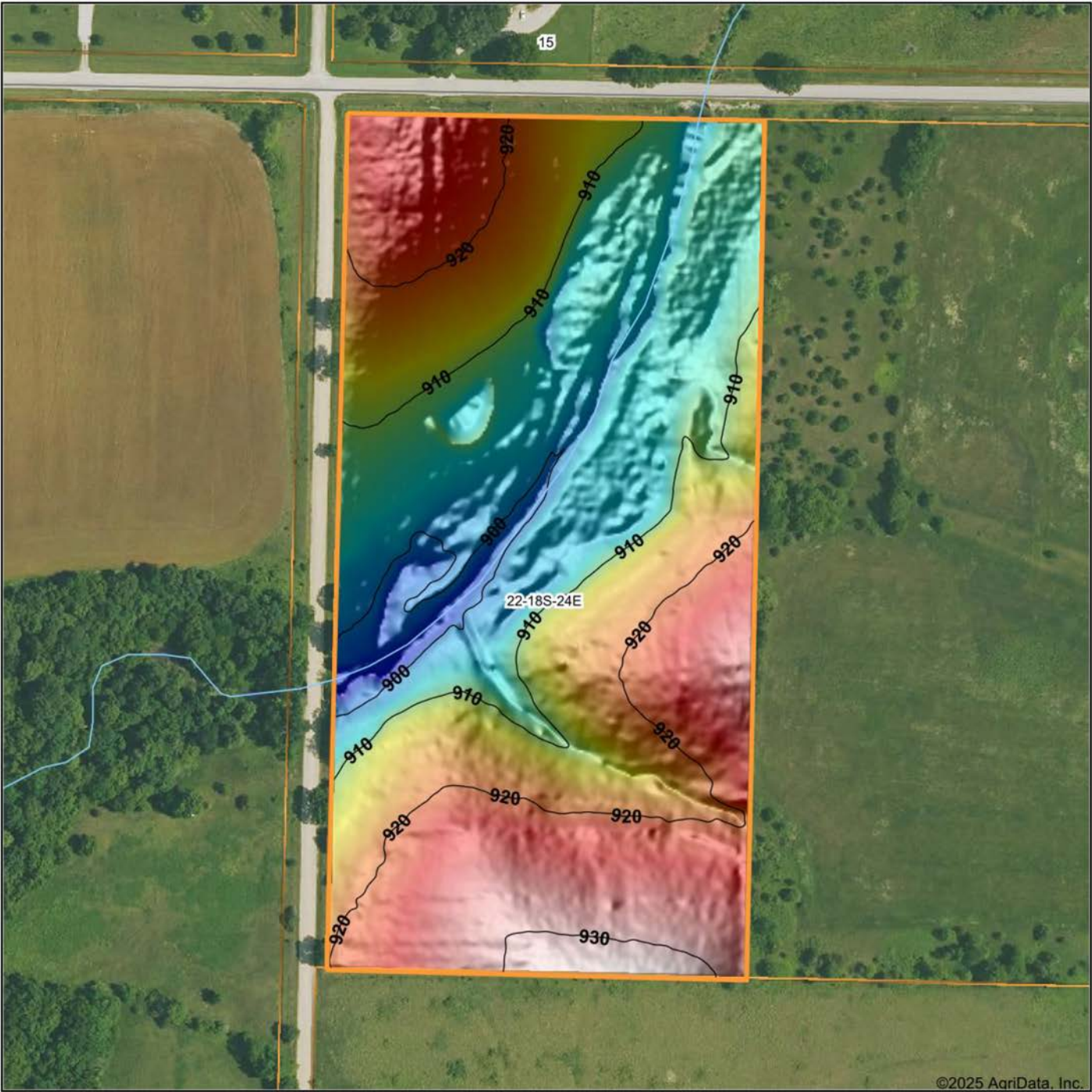
BEAUTIFUL YEAR-ROUND STREAM



ADDITIONAL PHOTOS



HILLSHADE MAP

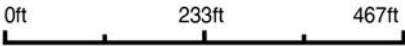


Maps Provided By:

surety
CUSTOMIZED ONLINE MAPPING

© AgriData, Inc. 2023 www.AgriDataInc.com

Source: USGS 1 meter dem
Interval(ft): 10
Min: 0.0
Max: 0.0
Range: .0
Average: .0
Standard Deviation: 0 ft

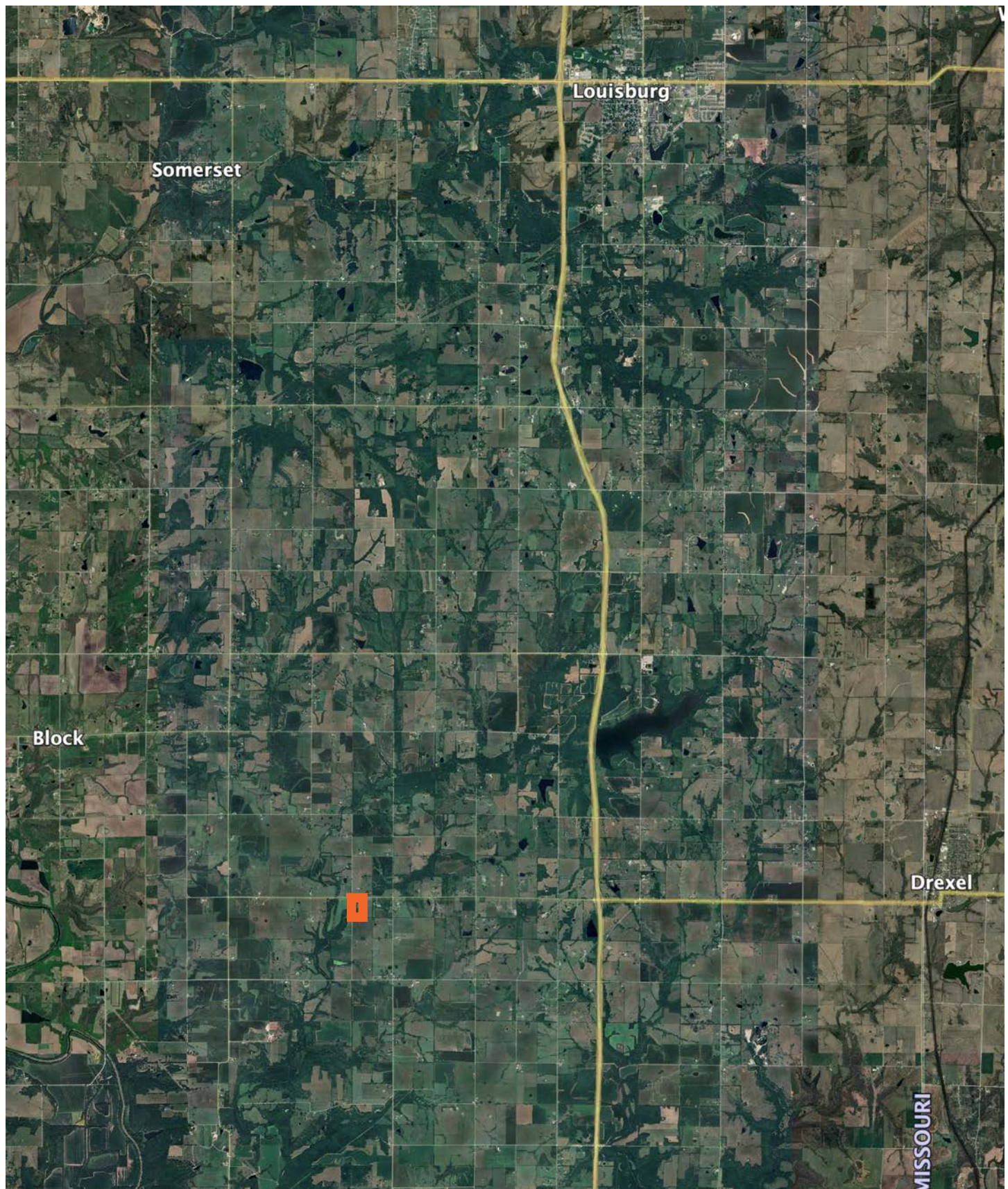


8/14/2025

22-18S-24E
Miami County
Kansas

Boundary Center: 38° 28' 29.09, -94° 44' 26.85

TOPOGRAPHY MAP



AGENT CONTACT

Donnie Thomas grew up an avid outdoorsman, learning how to hunt and fish early on from his father on their farm in Garnett, KS. This led to his passion for farms and property, and the possibilities that lie within to improve the land for wildlife. Born in Oswego, KS, Donnie attended high school in Olathe and graduated from Emporia State University with a Business degree in Marketing and Management. Before getting into real estate, he co-owned a large, regional, medical equipment company with his brother, at which he developed a deep appreciation for service and how it can make all the difference in a client relationship.

Today, Donnie uses that experience at Midwest Land Group to help others buy and sell land. His background as an outdoorsman, as well as owning and managing a farm, lends itself well to the land real estate industry. In addition to hunting, fishing, shooting, water sports, and travel, this proud Eagle Scout enjoys helping youth learn how to hunt, having organized several youth pheasant hunts. Donnie serves as a worship leader at Kahola Lake Church and is active at Grace Church, as well as the Fellowship of Christian Athletes Outdoors. Donnie and his wife Kristina, along with their three sons, use their passion for the outdoors to make their family farm in LaCygne an outdoor retreat and an escape from the city.



DONNIE THOMAS, LAND AGENT
913.396.6245
DThomas@MidwestLandGroup.com



MidwestLandGroup.com

This property is being offered by Midwest Land Group, LLC. 913.674.8010. All information provided by Midwest Land Group, LLC or their agents was acquired from sources deemed accurate and reliable, however we do not warrant its accuracy or completeness. Midwest Land Group, LLC assumes no liability for error, omission or investment results. Midwest Land Group, LLC. Licensed in Alabama, Arkansas, Illinois, Indiana, Iowa, Kansas, Kentucky, Louisiana, Minnesota, Mississippi, Missouri, Montana, Nebraska, Ohio, Oklahoma, South Dakota, Tennessee, Texas, Wisconsin, and Wyoming.