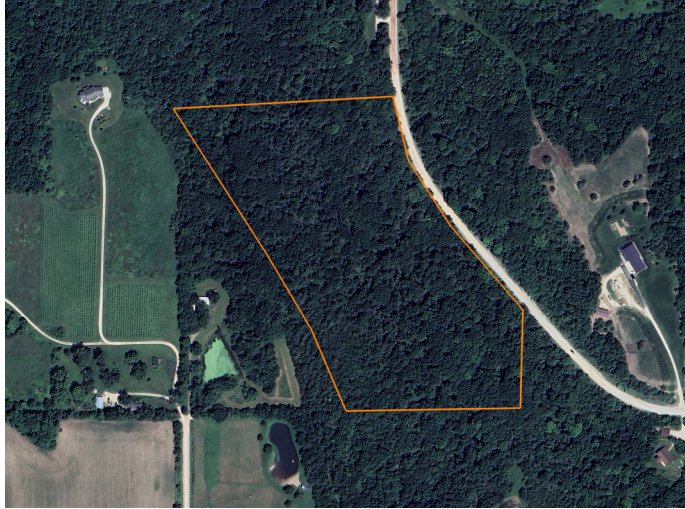


LAND FOR SALE

EXCELLENT HUNTING/RECREATIONAL FARM WITH POTENTIAL SCENIC BUILDING



PROPERTY FEATURES

- 25 miles southwest of West Des Moines
- 1 mile south of the famous "Hogback Bridge"
- Timber setting with scenic views
- Winterset School District
- Private and peaceful
- Mix of hardwoods and cedars
- Trail system throughout the farm
- Excellent trophy deer and turkey hunting
- Major ridge travel corridor with excellent bedding cover



For more information, contact:

DENNIS WILLIAMS, Land Agent

515.739.3053 | DWilliams@MidwestLandGroup.com

MidwestLandGroup.com BUYERS, SELLERS, AND LAND – CONNECTED

This property is being offered by Midwest Land Group, LLC, 7111 W. 151st Street, Ste. 27, Overland Park, KS 66223, 913.674.8010. Licensed in AL, AR, IL, IN, IA, KS, KY, LA, MN, MS, MO, MT, NE, OH, OK, SD, TN, TX, WI, and WY.



PRICE: **\$279,000**

COUNTY: **MADISON**

STATE: **IOWA**

ACRES: **22**

