

MIDWEST LAND GROUP PRESENTS



**19.5 ACRES**  
**LINN COUNTY, KS**

---

**Farlin Road, Parker, Kansas 66072**



MIDWEST LAND GROUP IS HONORED TO PRESENT

# A LARGE SECLUDED HOME ON BEAUTIFUL 19.5 +/- ACRES

Located in Parker, Kansas, this 19.5 +/- acres features a private setting with a long driveway that leads to a home you wouldn't know is there from the road. If seclusion is what you are after, this is not one to miss out on.

The 19.5 acres feel big! 3 sides of the property are lined with dense trees, with the North side an open agricultural field. The interior of the acreage features a hay field, timber to hunt and explore, and a large home awaiting your vision at the end of a long driveway. The owners have hunted and watched whitetail deer on this property for years.

The home, built in 2003, spans 5,832 square feet with an attached garage. The main floor includes a large living room with vaulted ceilings and a place, along with a good-sized kitchen with an island, a small dining area, a formal dining room, and a half bath. The master suite is beautiful. It will be hard not to love the large walk-in

closet, expansive bathroom, and the reading nook with windows to look at the backyard. The upstairs includes 3 bedrooms and 2 baths. The south two bedrooms have an adjoining loft that can be accessed from either bedroom via built-in ladders. This has been used as a "fort" for the children. The north bedroom has its own full bathroom. There is an office area accompanied by well-built bookshelves perfect for someone who works from home. The full basement, with a walkout door, features a second family room, a wet bar, a bedroom, a full bath, and a concrete safe room. The basement is top-notch! The exterior of the home features a wrap-around porch and back deck for entertaining and a cup of coffee to watch the breathtaking sunrises.

Give Aaron Blount a call for a private showing at (913) 256-5905 if a private home on acreage away from the hustle and bustle of city life is for you.



# PROPERTY FEATURES

PRICE: **\$499,000** | COUNTY: **LINN** | STATE: **KANSAS** | ACRES: **19.5**

---

- Long driveway
- Secluded 5,800+ square-foot home
- Wrap-around porch
- Full basement
- Central vacuum
- Newer HVAC
- Hunting opportunities
- Short drive on gravel
- 3 miles to Parker
- 18 miles to Paola
- 40 miles to Olathe



# SECLUDED HOME

---

The home, built in 2003, spans 5,832 square feet with an attached garage. The exterior of the home features a wrap-around porch and back deck for entertaining and a cup of coffee to watch the breathtaking sunrises.



# VAULTED CIELINGS



# MASTER SUITE



# FULL BASEMENT

---

The full basement, with a walkout door, features a second family room, a wet bar, a bedroom, a full bath, and a concrete safe room. The basement is top-notch!



# ADDITIONAL INTERIOR PHOTOS



# HUNTING OPPORTUNITIES

---



## LONG DRIVEWAY

---



# AERIAL MAP



©2025 AgriData, Inc.

Boundary Center: 38° 21' 40.42, -94° 58' 32.66

0ft 284ft 568ft



Maps Provided By:



© AgriData, Inc. 2023

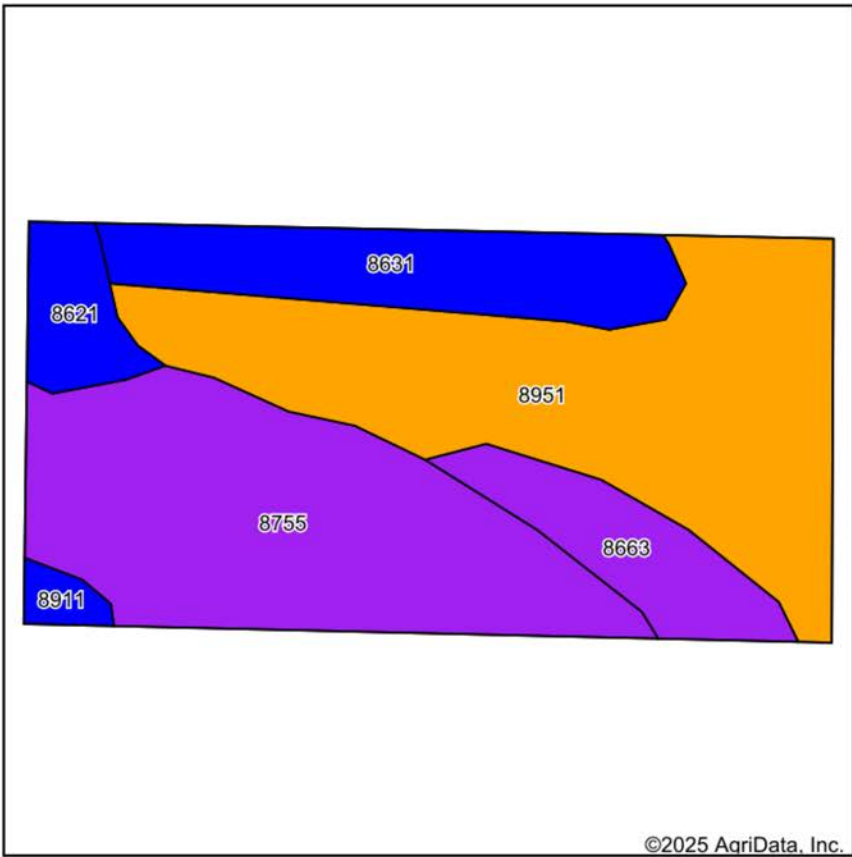
www.AgriDataInc.com

**28-19S-22E**  
**Linn County**  
**Kansas**



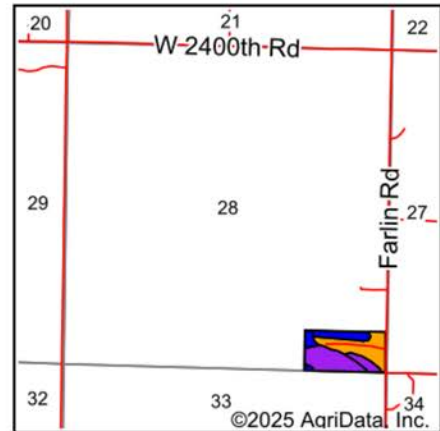
8/26/2025

# SOILS MAP



Soils data provided by USDA and NRCS.

©2025 AgriData, Inc.



State: **Kansas**  
County: **Linn**  
Location: **28-19S-22E**  
Township: **Liberty**  
Acres: **20.04**  
Date: **8/26/2025**



Maps Provided By:



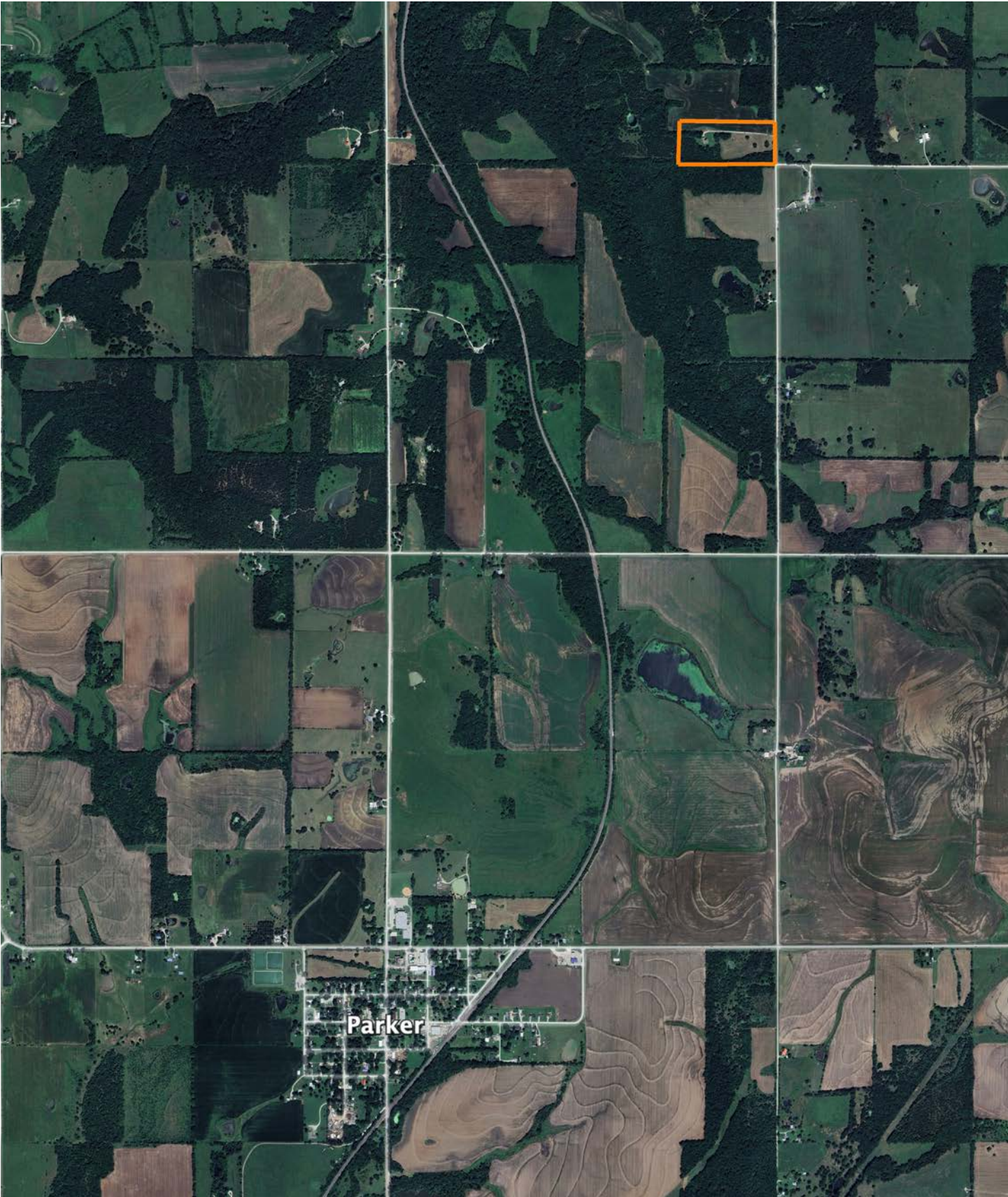
Area Symbol: KS107, Soil Area Version: 24

Code	Soil Description	Acres	Percent of field	Non-Irr Class Legend	Restrictive Layer	Non-Irr Class *c	Range Production (lbs/acre/yr)	*n NCCPI Overall	*n NCCPI Corn	*n NCCPI Small Grains	*n NCCPI Soybeans	*n NCCPI Cotton
8951	Wagstaff silty clay loam, 1 to 3 percent slopes	7.68	38.4%		2.5ft. (Lithic bedrock)	IIIe	4968	52	51	51	43	46
8755	Eram-Lebo complex, 5 to 20 percent slopes	6.78	33.8%		2.3ft. (Paralithic bedrock)	VIe	4247	50	49	41	36	42
8631	Bucyrus silty clay loam, 1 to 3 percent slopes	2.72	13.6%		5.4ft. (Lithic bedrock)	IIe	6108	74	74	58	60	63
8663	Clareson-Rock outcrop complex, 3 to 15 percent slopes	1.67	8.3%		2ft. (Lithic bedrock)	VIe	3398	44	44	25	27	28
8621	Bates loam, 1 to 3 percent slopes	0.93	4.6%		2.7ft. (Paralithic bedrock)	IIe	4735	65	65	57	52	59
8911	Summit silty clay loam, 1 to 3 percent slopes	0.26	1.3%		> 6.5ft.	IIe	4828	62	61	58	60	47
Weighted Average						4.07	4735.3	*n 54.4	*n 53.6	*n 46.8	*n 42.2	*n 46.1

\*n: The aggregation method is "Weighted Average using all components"

\*c: Using Capabilities Class Dominant Condition Aggregation Method

# OVERVIEW MAP



# AGENT CONTACT

Introducing Aaron Blount of Midwest Land Group, your dedicated expert for Eastern Kansas and Western Missouri. Born in Texas and a proud alumnus of Lakeview Centennial High School in Garland, Aaron's journey led him to Emporia State on a football scholarship. But it was the allure of Kansas' majestic Whitetails and Midwest warmth that convinced him to lay roots post-graduation.

Now residing in Osawatomie with his wife, Jade, and son, Bowen, the Blounts are passionate about the outdoors. Whether they're hunting whitetail, mule deer, turkey, or fishing, their activities testify to their deep connection to the land.

In addition to his expertise in land sales, Aaron's drive is genuine. His mission is to work with those who share his respect for the land, be it hunters or farmers. His eight-year tenure as a Police Officer honed his integrity and dedication, making him a trusted partner in land transactions. His hands-on experience, from understanding animal behavior in relation to topography to trail camera placements, sets him apart.

Active in his Lenexa church community, Aaron's previous law enforcement roles saw him rise to the rank of Sergeant, earning accolades including a 2017 Valor Award from the Kansas Chiefs of Police Association.

What sets Aaron apart? His genuine passion, unwavering integrity, and commitment to his clients. It's not just business for Aaron; it's about connecting dreams with reality. His profound knowledge and sincere approach make him the ideal choice for anyone navigating land sales in Kansas and Missouri.



**AARON BLOUNT,**  
LAND AGENT

**913.256.5905**

[ABlount@MidwestLandGroup.com](mailto:ABlount@MidwestLandGroup.com)



## MidwestLandGroup.com

This property is being offered by Midwest Land Group, LLC. 913.674.8010. All information provided by Midwest Land Group, LLC or their agents was acquired from sources deemed accurate and reliable, however we do not warrant its accuracy or completeness. Midwest Land Group, LLC assumes no liability for error, omission or investment results. Midwest Land Group, LLC. Licensed in Alabama, Arkansas, Illinois, Indiana, Iowa, Kansas, Kentucky, Louisiana, Minnesota, Mississippi, Missouri, Montana, Nebraska, Ohio, Oklahoma, South Dakota, Tennessee, Texas, Wisconsin, and Wyoming.