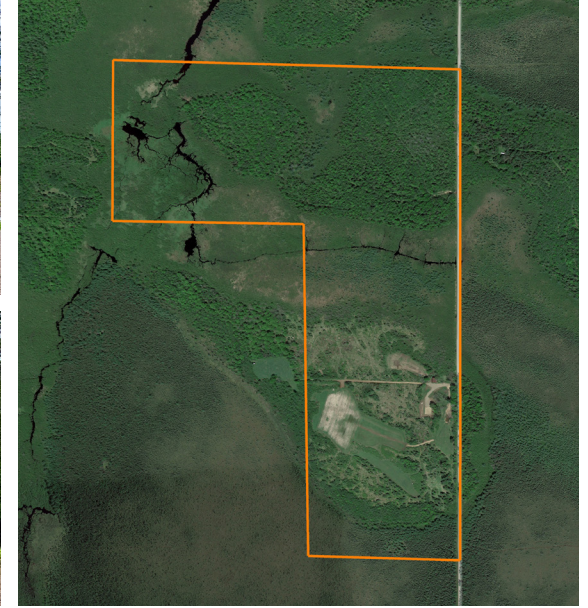


LAND FOR SALE

TURN-KEY HUNTING FARM WITH HOME IN TOMAHAWK, WISCONSIN

COUNTY: **LINCOLN**
STATE: **WISCONSIN**
ACRES: **160**



PROPERTY FEATURES

- Over 160 +/- acres of agriculture, food plots, timber, and lowland
- Miles of trails accessing the entire property
- Excellent deer, bear, turkey, and grouse hunting
- Private, secluded setting with a large yard and pond
- Brand new 1,500 square foot off-grid modular home with all utilities
- Large storage shed, 4 elevated Muddy tower stands
- ATV, UTV, and snowmobile trail access
- Only 5 minutes outside beautiful Tomahawk, WI
- Only 5 minutes from Spirit Flowage Boat Ramp 1
- Within minutes of countless lakes, rivers, and streams

For more information, contact:

MATT SPETS, Land Agent

715.393.8387 | MSpets@MidwestLandGroup.com

MidwestLandGroup.com



This property is being offered by Midwest Land Group, LLC, 7111 W. 151st Street, Ste. 27, Overland Park, KS 66223, 913.674.8010. Licensed in AL, AR, IA, IL, IN, KS, KY, LA, MN, MO, MS, MT, NE, OH, OK, SD, TN, TX, WI, and WY.