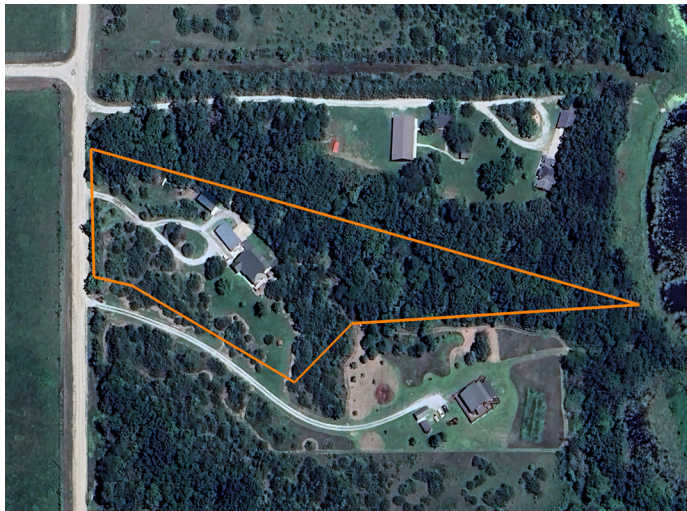


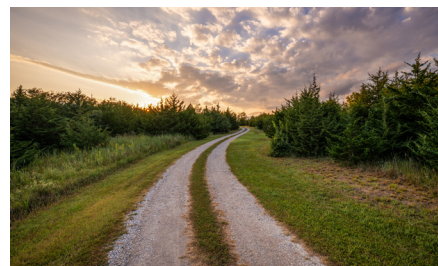
LAND FOR SALE

PEACEFUL RETREAT ON 3.3 ACRES - A NATURE LOVERS DREAM!



PROPERTY FEATURES

- Numerous large oak trees
- Secluded
- Great workshop space
- Attached oversized 2-stall garage
- Fully finished basement with a kitchenette
- Loads of wildlife viewing opportunities
- Sunroom
- Large deck and front porch
- Situated on a quiet, dead-end road



For more information, contact:

NATE KEY, Land Agent

402.795.1029 | NKey@MidwestLandGroup.com

MidwestLandGroup.com BUYERS, SELLERS, AND LAND – CONNECTED

This property is being offered by Midwest Land Group, LLC, 7111 W. 151st Street, Ste. 27, Overland Park, KS 66223, 913.674.8010.
Licensed in AL, AR, IL, IN, IA, KS, KY, LA, MN, MS, MO, MT, NE, OH, OK, SD, TN, TX, WI, and WY.



PRICE: **\$396,000**

COUNTY: **JOHNSON**

STATE: **NEBRASKA**

ACRES: **3.3**

