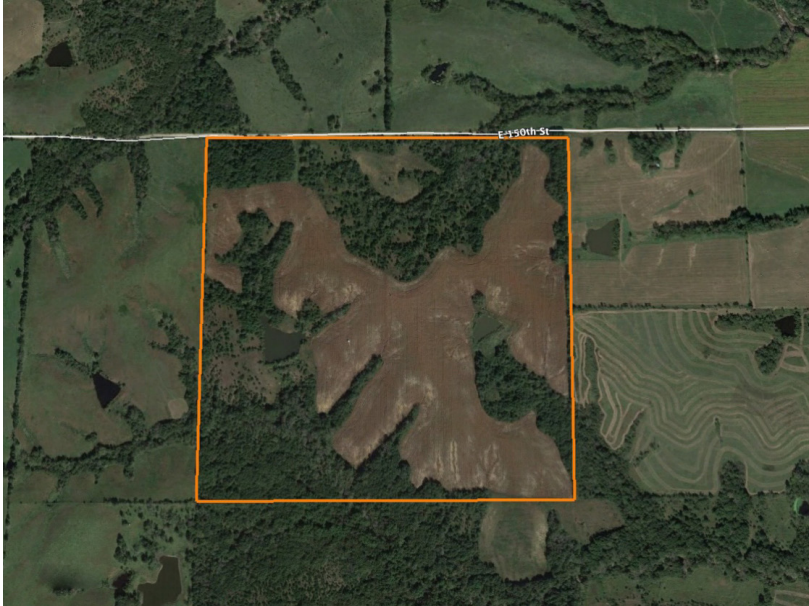


LAND FOR SALE

# GORGEOUS 80 ACRE FARM WITH GREAT DEER HUNTING IN BUCHANAN COUNTY

PRICE: **\$267,000**  
COUNTY: **BUCHANAN**  
STATE: **MISSOURI**  
ACRES: **80**



## PROPERTY FEATURES

- Prime property to build a home or cabin
- Gorgeous views
- Secluded southern exposure build site
- 25 minutes from I-29 and highway 152
- Well-maintained road only 1/4 mile to asphalt
- Great mix of open pasture and timber
- Beautiful 5 acre lake
- Great hunting
- Strong deer and turkey population
- Fertile soils for hay or row crop production



For more information, contact:

**JASON STOKES**, Land Agent

**636.465.9445** | [JStokes@MidwestLandGroup.com](mailto:JStokes@MidwestLandGroup.com)

**MidwestLandGroup.com**



This property is being offered by Midwest Land Group, LLC, 7111 W. 151st Street, Ste. 27, Overland Park, KS 66223, 913.674.8010. Licensed in AL, AR, IL, IN, IA, KS, KY, LA, MN, MS, MO, MT, NE, OH, OK, SD, TN, TX, WI, and WY.



LAND FOR SALE

# GORGEOUS 80 ACRE FARM WITH GREAT DEER HUNTING IN BUCHANAN COUNTY

PRICE: **\$267,000**  
COUNTY: **BUCHANAN**  
STATE: **MISSOURI**  
ACRES: **80**



## PROPERTY FEATURES

- Prime property to build a home or cabin
- Gorgeous views
- Secluded southern exposure build site
- 25 minutes from I-29 and highway 152
- Well-maintained road only 1/4 mile to asphalt
- Great mix of open pasture and timber
- Beautiful 5 acre lake
- Great hunting
- Strong deer and turkey population
- Fertile soils for hay or row crop production



For more information, contact:

**JASON STOKES**, Land Agent

**636.465.9445** | [JStokes@MidwestLandGroup.com](mailto:JStokes@MidwestLandGroup.com)

**MidwestLandGroup.com**



This property is being offered by Midwest Land Group, LLC, 7111 W. 151st Street, Ste. 27, Overland Park, KS 66223, 913.674.8010. Licensed in AL, AR, IL, IN, IA, KS, KY, LA, MN, MS, MO, MT, NE, OH, OK, SD, TN, TX, WI, and WY.



LAND FOR SALE

# GORGEOUS 80 ACRE FARM WITH GREAT DEER HUNTING IN BUCHANAN COUNTY

PRICE: **\$267,000**

COUNTY: **BUCHANAN**

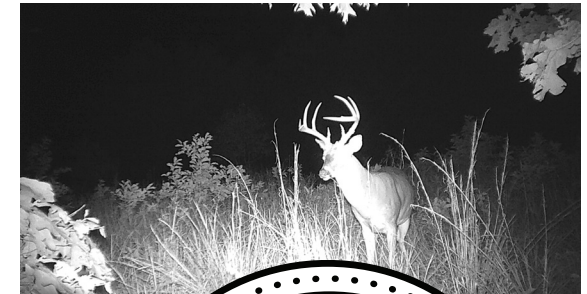
STATE: **MISSOURI**

ACRES: **80**



## PROPERTY FEATURES

- Prime property to build a home or cabin
- Gorgeous views
- Secluded southern exposure build site
- 25 minutes from I-29 and highway 152
- Well-maintained road only 1/4 mile to asphalt
- Great mix of open pasture and timber
- Beautiful 5 acre lake
- Great hunting
- Strong deer and turkey population
- Fertile soils for hay or row crop production



For more information, contact:

**JASON STOKES**, Land Agent

**636.465.9445** | [JStokes@MidwestLandGroup.com](mailto:JStokes@MidwestLandGroup.com)

**MidwestLandGroup.com**

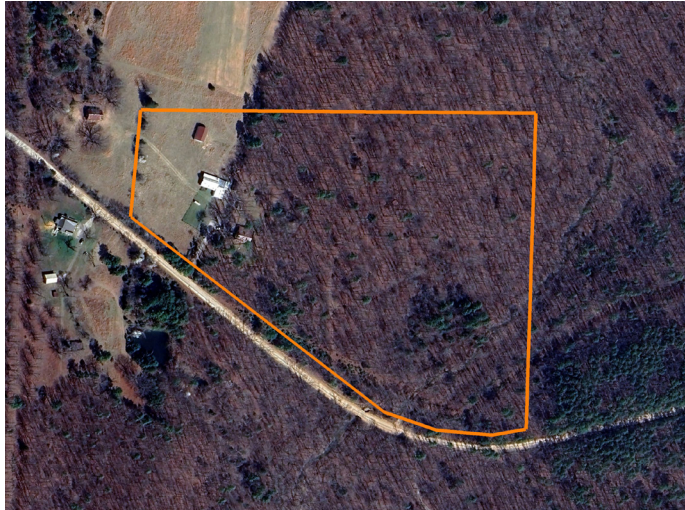


This property is being offered by Midwest Land Group, LLC, 7111 W. 151st Street, Ste. 27, Overland Park, KS 66223, 913.674.8010. Licensed in AL, AR, IL, IN, IA, KS, KY, LA, MN, MS, MO, MT, NE, OH, OK, SD, TN, TX, WI, and WY.



# LAND FOR SALE

## CHARMING 2 BED, 2 BATH HOME ON 18 ACRES BORDERING MARK TWAIN NATIONAL FOREST



### PROPERTY FEATURES

- 2 bedrooms, 2 bathrooms
- 1,074 sq. ft. home with full basement
- Covered porch
- Back deck
- Whole-house propane generator
- 2-car carport
- 18 acres with mature timber & open pasture
- Several barns, outbuildings, and horse stalls
- Fenced yard



For more information, contact:

**JASON STOKES**, Land Agent

**636.465.9445** | [JStokes@MidwestLandGroup.com](mailto:JStokes@MidwestLandGroup.com)

**MidwestLandGroup.com** BUYERS, SELLERS, AND LAND – CONNECTED

This property is being offered by Midwest Land Group, LLC, 7111 W. 151st Street, Ste. 27, Overland Park, KS 66223, 913.674.8010.  
Licensed in AL, AR, IL, IN, IA, KS, KY, LA, MN, MS, MO, MT, NE, OH, OK, SD, TN, TX, WI, and WY.



PRICE: **\$275,000**

COUNTY: **IRON**

STATE: **MISSOURI**

ACRES: **18.5**

