

LAND FOR SALE

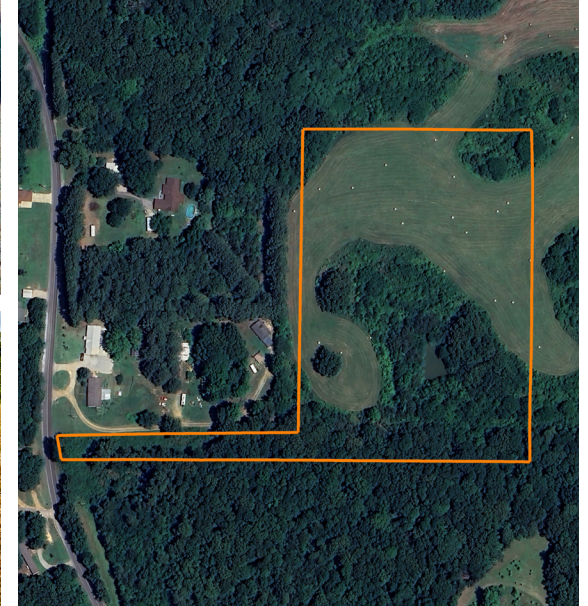
# PASTURE, TIMBER, AND HILLTOP VIEWS ON 10.5 +/- ACRES

PRICE: **\$195,000**

COUNTY: **CRAIGHEAD**

STATE: **ARKANSAS**

ACRES: **10.5**



## PROPERTY FEATURES

- 60' of paved frontage on Hasbrook Rd.
- Gorgeous hilltop build site at 420' elevation with big views
- Small pond
- 50/50 pasture to timber
- Power and fiber available
- CWL water accessible
- Tons of deer and turkey
- 2 miles northeast of Bono
- 10 minutes to downtown Jonesboro



For more information, contact:

**MICHAEL ROOK**, Land Agent

**870.501.7095** | [MRook@MidwestLandGroup.com](mailto:MRook@MidwestLandGroup.com)

**MidwestLandGroup.com**



This property is being offered by Midwest Land Group, LLC, 7111 W. 151st Street, Ste. 27, Overland Park, KS 66223, 913.674.8010. Licensed in AL, AR, IL, IN, IA, KS, KY, LA, MN, MS, MO, MT, NE, OH, OK, SD, TN, TX, WI, and WY.