

MIDWEST LAND GROUP PRESENTS

18.6 ACRES IN

WALWORTH COUNTY WISCONSIN



MidwestLandGroup.com

MIDWEST LAND GROUP IS HONORED TO PRESENT

WHITEWATER WOODS: BUILD, HUNT, AND EXPLORE

If you've been dreaming of a secluded getaway surrounded by nature, this 18.63 +/- acre property in the Town of Whitewater might be just what you're looking for. Located right across the road from Rice Lake and less than a mile from a Kettle Moraine State Forest trailhead, it's a perfect spot for anyone who loves the outdoors.

The front of the property includes two R1 lots along Kettle Moraine Drive, while the remaining 18 +/- acres of R3 land stretch back into a beautiful mix of mature

hardwoods and big pines—an ideal setting for a cabin or custom home tucked back in the woods. Whether you're into hiking, hunting, or just relaxing in total privacy, this land has you covered.

It's peaceful, private, and in a great location with endless recreation right out your back door. Opportunities like this don't come up often in this part of the Kettle Moraine. Give me a call today to see everything that this property has to offer!



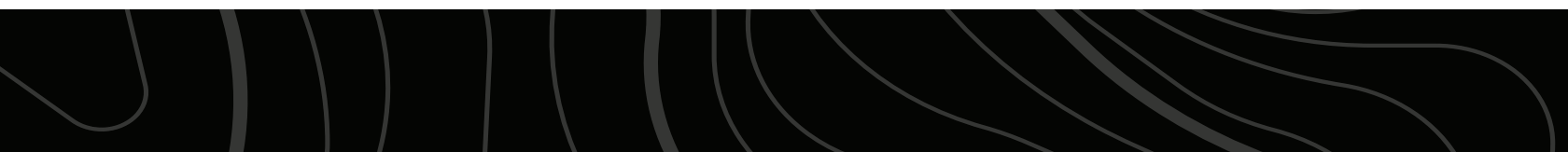
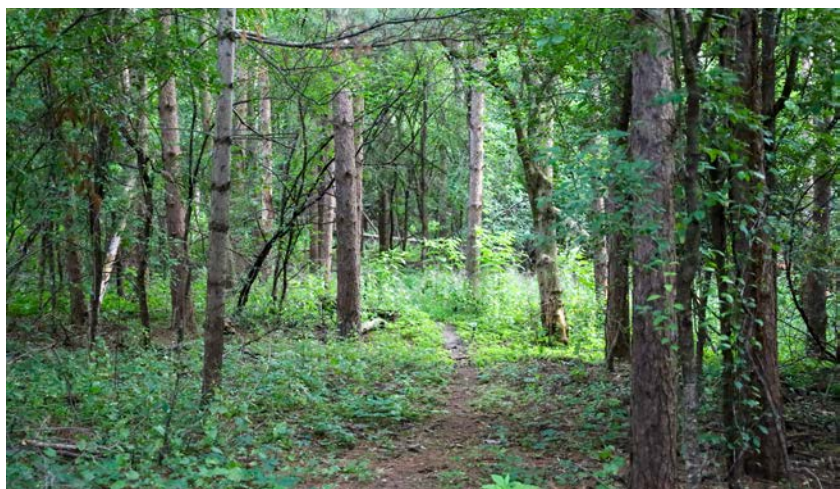
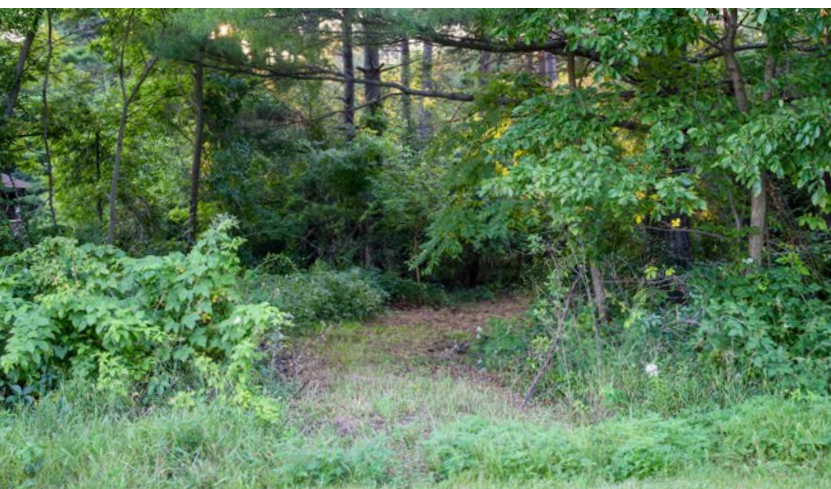
PROPERTY FEATURES

PRICE: **\$420,000** | COUNTY: **WALWORTH** | STATE: **WISCONSIN** | ACRES: **18.6**

- 18.63 +/- acres in the Town of Whitewater, Walworth County
- Two R1 buildable lots along Kettle Moraine Drive
- Approximately 18 +/- acres of R3 wooded land for added privacy and flexibility
- Ideal build site tucked among mature hardwoods
- Directly across the street from Rice Lake
- Less than a mile from a Kettle Moraine State Forest trailhead with hiking, biking, and equestrian trails
- Excellent hunting potential
- Natural rolling terrain
- A private and peaceful setting
- Endless opportunities for year-round outdoor enjoyment right out your back door

IDEAL BUILD SITE

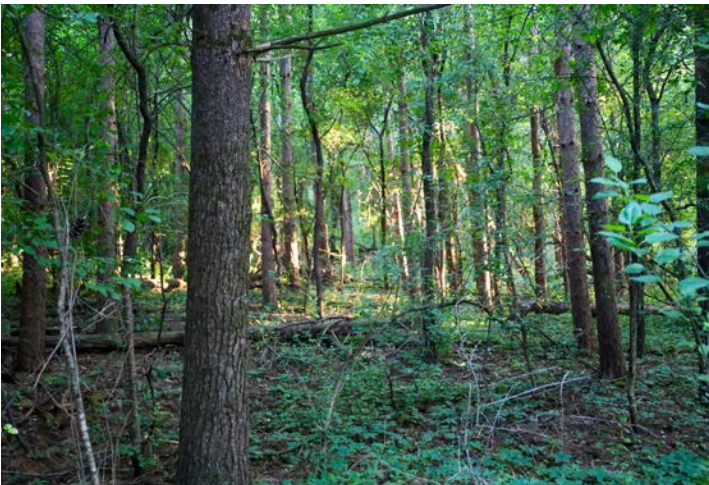
The front of the property includes two R1 lots along Kettle Moraine Drive, while the remaining 18 +/- acres of R3 land stretch back into a beautiful mix of mature hardwoods and big pines—an ideal setting for a cabin or custom home tucked back in the woods.



ACROSS THE STREET FROM RICE LAKE



EXCELLENT HUNTING POTENTIAL



AERIAL MAP



©2025 AgriData, Inc.



Maps Provided By:



© AgriData, Inc. 2023

www.AgriDataInc.com

Boundary Center: 42° 46' 30.45, -88° 42' 11.76

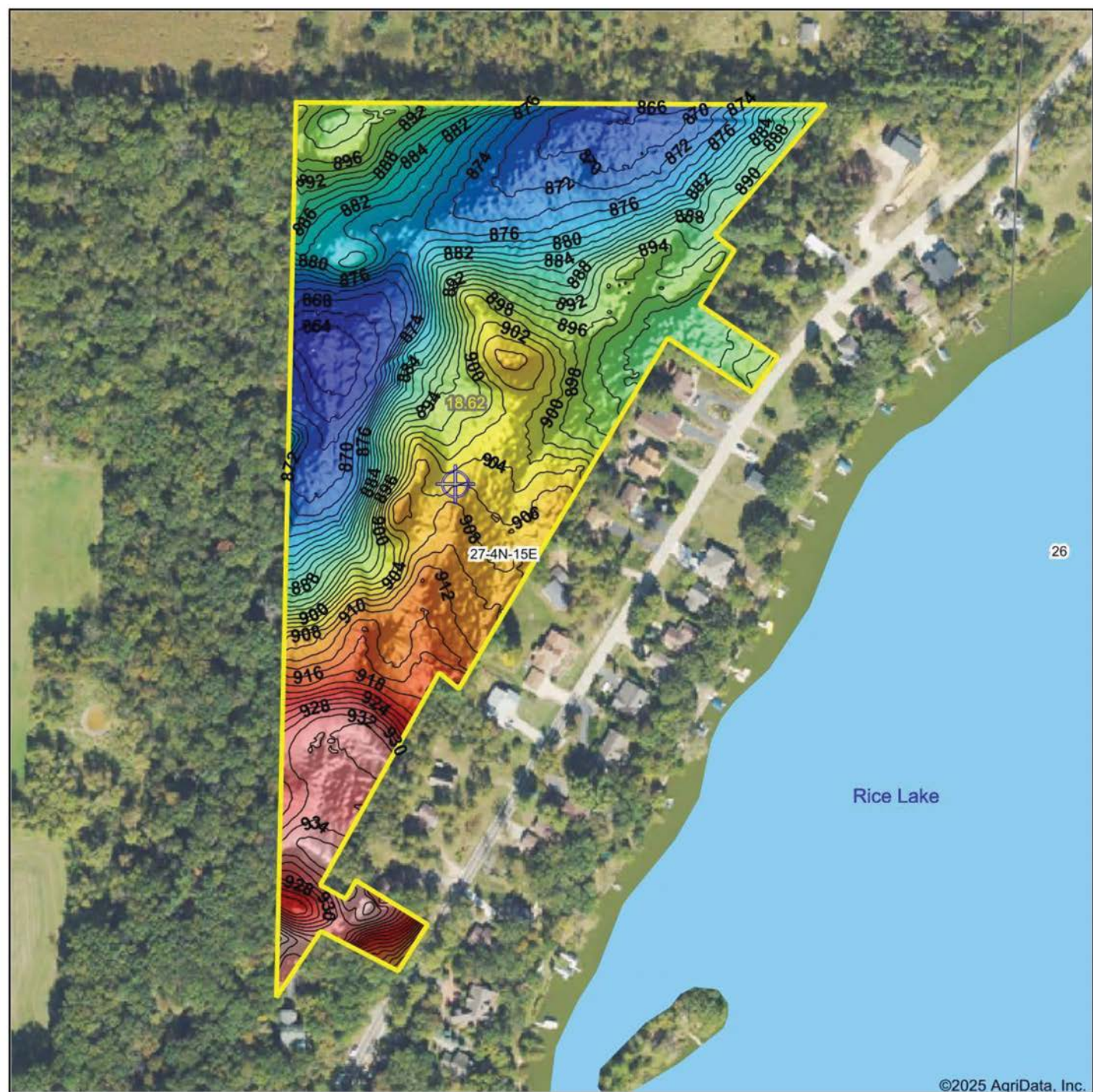
27-4N-15E
Walworth County
Wisconsin

0ft 301ft 602ft



7/21/2025

HILLSHADE MAP



Low Elevation High



Maps Provided By:



© AgriData, Inc. 2023

www.AgriDataInc.com

Source: USGS 1 meter dem

Interval(ft): 2

Min: 862.4

Max: 942.6

Range: 80.2

Average: 893.9

Standard Deviation: 19.06 ft

0ft 288ft 576ft

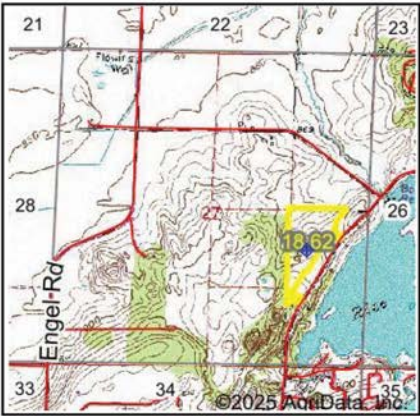


7/21/2025

27-4N-15E
Walworth County
Wisconsin

Boundary Center: 42° 46' 30.45, -88° 42' 11.76

WETLANDS MAP



State: **Wisconsin**
Location: **27-4N-15E**
County: **Walworth**
Township: **Whitewater**
Date: **7/21/2025**



Maps Provided By:
surety
CUSTOMIZED ONLINE MAPPING
© AgriData, Inc. 2023 www.AgriDataInc.com



0ft 463ft 926ft

Classification Code	Type	Acres
PEM1C	Freshwater Emergent Wetland	0.28
Total Acres		0.28

Data Source: National Wetlands Inventory website. U.S. DoI, Fish and Wildlife Service, Washington, D.C. <http://www.fws.gov/wetlands/>

AGENT CONTACT

Jordan is a dedicated, hard-working land agent passionate about helping clients navigate the land market in Southern Wisconsin. Growing up in Waukesha County, Jordan has a deep appreciation for the area's unique charm and potential. Ever since he could put on his own boots, Jordan has been hunting and helping manage his family farms in Grant and Crawford counties to produce year after year. Traveling across the different landscapes across the state has allowed him to appreciate all of the landscapes and markets the state has to offer.

Graduating from Marquette University with his Master's in Management and playing 5 years of Division I lacrosse has instilled the importance of teamwork into his approach to the real estate business. After spending 2 years at the Midwest Land Group office helping over 100 agents across 13 states build their businesses, he is ready to get back to supporting the state that holds such a large place in his heart. Being a part of hundreds of transactions through the home office gave Jordan a deep accountability in the fact that all parties involved in a transaction must fully own their roles for the best outcome possible and is never afraid to go above and beyond for his clients to ensure they achieve their goals.

In his spare time, Jordan enjoys spending time with his wife Elaina. They enjoy diving deeper into their faith life through their local church and organizations such as Young Life and FCA. When he isn't spending time with his family, you'll likely find Jordan working out with his friends or spending some time out on the open water fishing. If you're in the market for recreational, farmland, or investment properties in Wisconsin, be sure to give Jordan a call!



JORDAN SCHMID

LAND AGENT

262.737.8823

JordanSchmid@MidwestLandGroup.com



MidwestLandGroup.com

This property is being offered by Midwest Land Group, LLC. 913.674.8010. All information provided by Midwest Land Group, LLC or their agents was acquired from sources deemed accurate and reliable, however we do not warrant its accuracy or completeness. Midwest Land Group, LLC assumes no liability for error, omission or investment results. Midwest Land Group, LLC. Licensed in Alabama, Arkansas, Illinois, Indiana, Iowa, Kansas, Kentucky, Louisiana, Minnesota, Mississippi, Missouri, Montana, Nebraska, Ohio, Oklahoma, South Dakota, Tennessee, Texas, Wisconsin, and Wyoming.