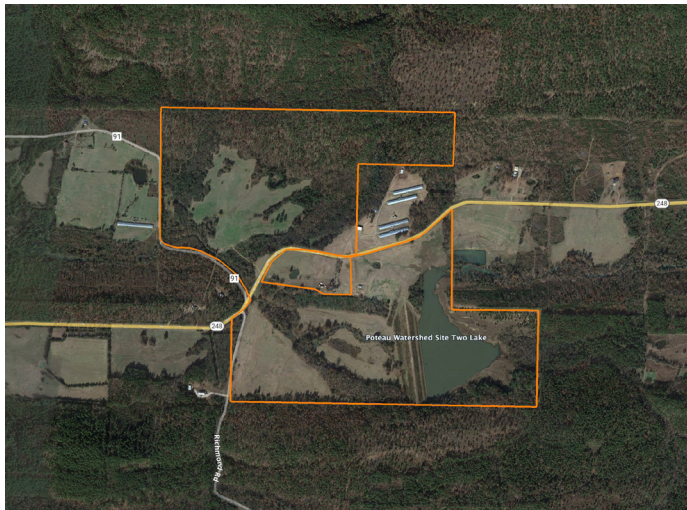


LAND FOR SALE

303 +/- ACRES WITH NATIONAL FOREST BOUNDARY AND 25 +/- ACRE PRIVATE



PROPERTY FEATURES

- 25 +/- acre private lake
- 1.75 miles of Ouachita National Forest boundary
- Highway 248 frontage
- Power and water available
- Two smaller ponds
- Excellent five-strand barbed wire fencing
- Lush pastures
- Hay meadows
- Abundance of deer and turkey



For more information, contact:

JAKE FOWLER, Land Agent

479.718.6465 | JFowler@MidwestLandGroup.com

MidwestLandGroup.com

BUYERS, SELLERS, AND LAND – CONNECTED

This property is being offered by Midwest Land Group, LLC, 7111 W. 151st Street, Ste. 27, Overland Park, KS 66223, 913.674.8010. Licensed in AL, AR, IL, IN, IA, KS, KY, LA, MN, MS, MO, MT, NE, OH, OK, SD, TN, TX, WI, and WY.



PRICE: **\$950,000**

COUNTY: **SCOTT**

STATE: **ARKANSAS**

ACRES: **303**

