

MIDWEST LAND GROUP PRESENTS

85.95 ACRES IN

---

# SAUK COUNTY WISCONSIN



[MidwestLandGroup.com](http://MidwestLandGroup.com)

MIDWEST LAND GROUP IS HONORED TO PRESENT

# PRIME SPRING GREEN WHITETAIL RETREAT

---

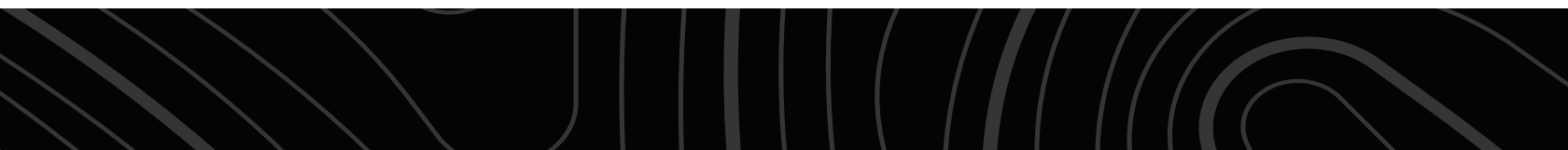
Located in the scenic town of Spring Green, this 85.95 +/- acre property offers a rare combination of seclusion, natural beauty, and convenience. Rolling hardwood ridges filled with mature oaks, maples, and walnuts create an ideal setting for outdoor enthusiasts, hunters, or those seeking a future homesite immersed in nature. The land is enrolled in the MFL program, promoting sustainable forest management while significantly reducing property taxes.

This property has been thoughtfully managed with a focus on whitetail habitat and herd quality. With like-minded neighbors practicing similar stewardship, this area consistently produces year after year. Approximately 6 acres of tillable ground provide both an attractive food source for wildlife and a steady income stream that can offset annual property taxes.

A well-maintained internal trail system provides easy access throughout the property, connecting to 3 enclosed box blinds and approximately 12 tree stands, making this a turn-key setup.

With electricity already on-site and a 5th wheel camper included, you can comfortably stay overnight and start enjoying the land right away. The property has already been perc tested, and with fiber optic internet available at the road, it also offers excellent potential for a future build. Whether you're looking for a weekend getaway, hunting retreat, or a private place to build your dream home, this property delivers on all fronts.

Give me a call today to set up your private showing and see everything that this paradise in Spring Green has to offer!





# PROPERTY FEATURES

PRICE: **\$745,000** | COUNTY: **SAUK** | STATE: **WISCONSIN** | ACRES: **85.95**

---

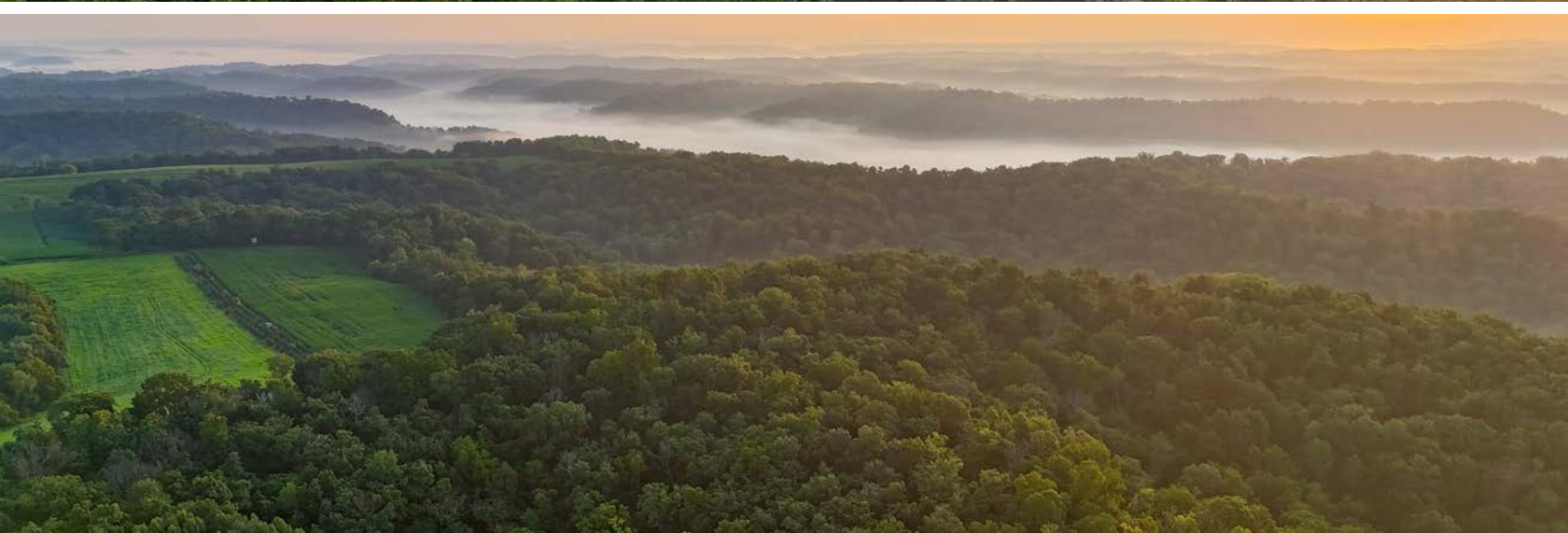
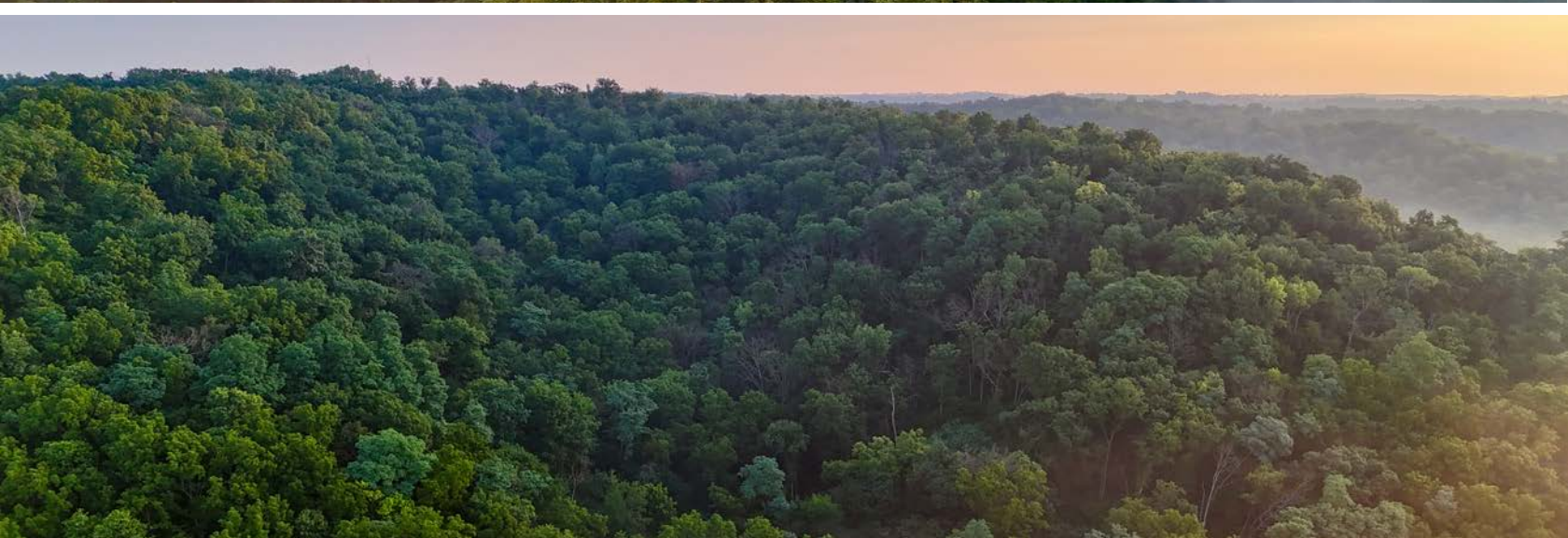
- 85.95 +/- acres located in the town of Spring Green, Sauk County
- Rolling hardwood ridges with mature oaks, maples, and walnuts
- Enrolled in the MFL program for sustainable management and low taxes
- 6 +/- acres of tillable ground provide a food source and income to offset taxes
- Property has been specifically managed for whitetails with like-minded neighbors
- 3 enclosed box blinds and approximately 12 tree stands included
- Well-maintained internal trail system provides easy access throughout
- Electric on-site with a 5th wheel camper included for immediate use
- Already perc tested, making it ideal for a future build
- Fiber optic internet available at the road





# ROLLING HARDWOOD RIDGES

---





# WELL-MAINTAINED INTERNAL TRAIL SYSTEM

---



6 +/- ACRES OF TILLABLE GROUND

---





# ELECTRIC ON-SITE & 5TH WHEEL CAMPER

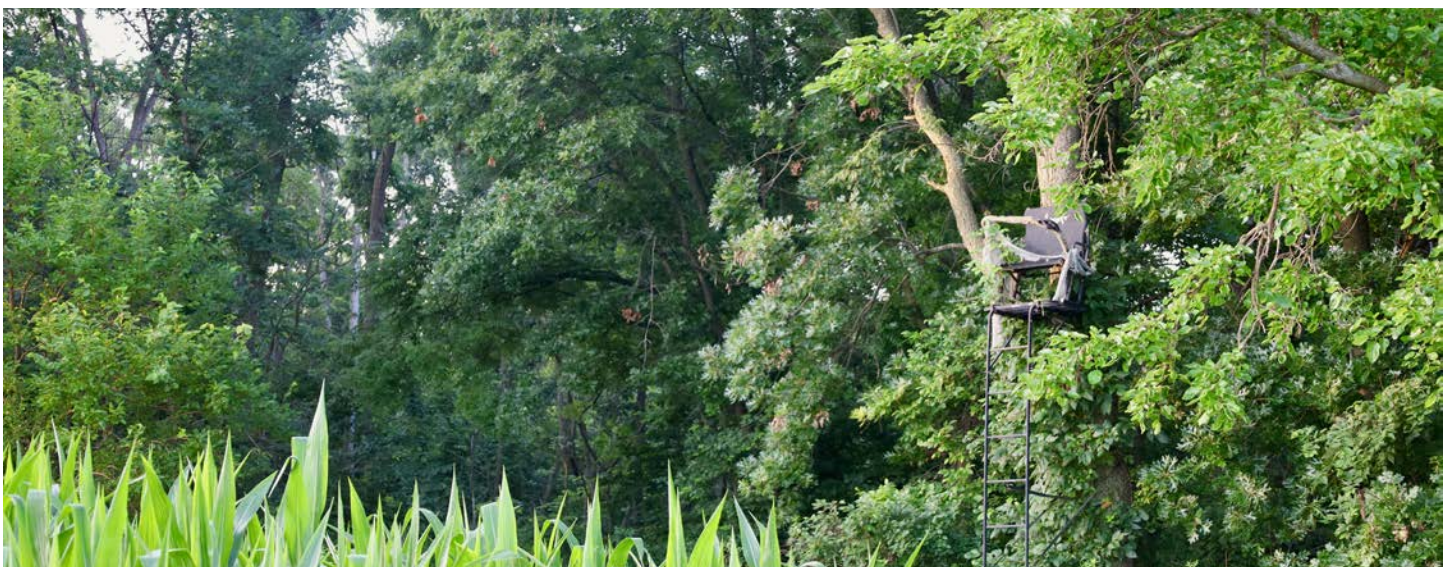
---





## 3 ENCLOSED BOX BLINDS & 12 TREE STANDS

---





# TRAIL CAM PICTURES

---





# AERIAL MAP



©2025 AgriData, Inc.



Maps Provided By:



© AgriData, Inc. 2023

www.AgriDataInc.com

Field borders provided by Farm Service Agency as of 5/21/2008.

Boundary Center: 43° 13' 0.15, -90° 3' 40.89

**31-9N-4E**  
**Sauk County**  
**Wisconsin**

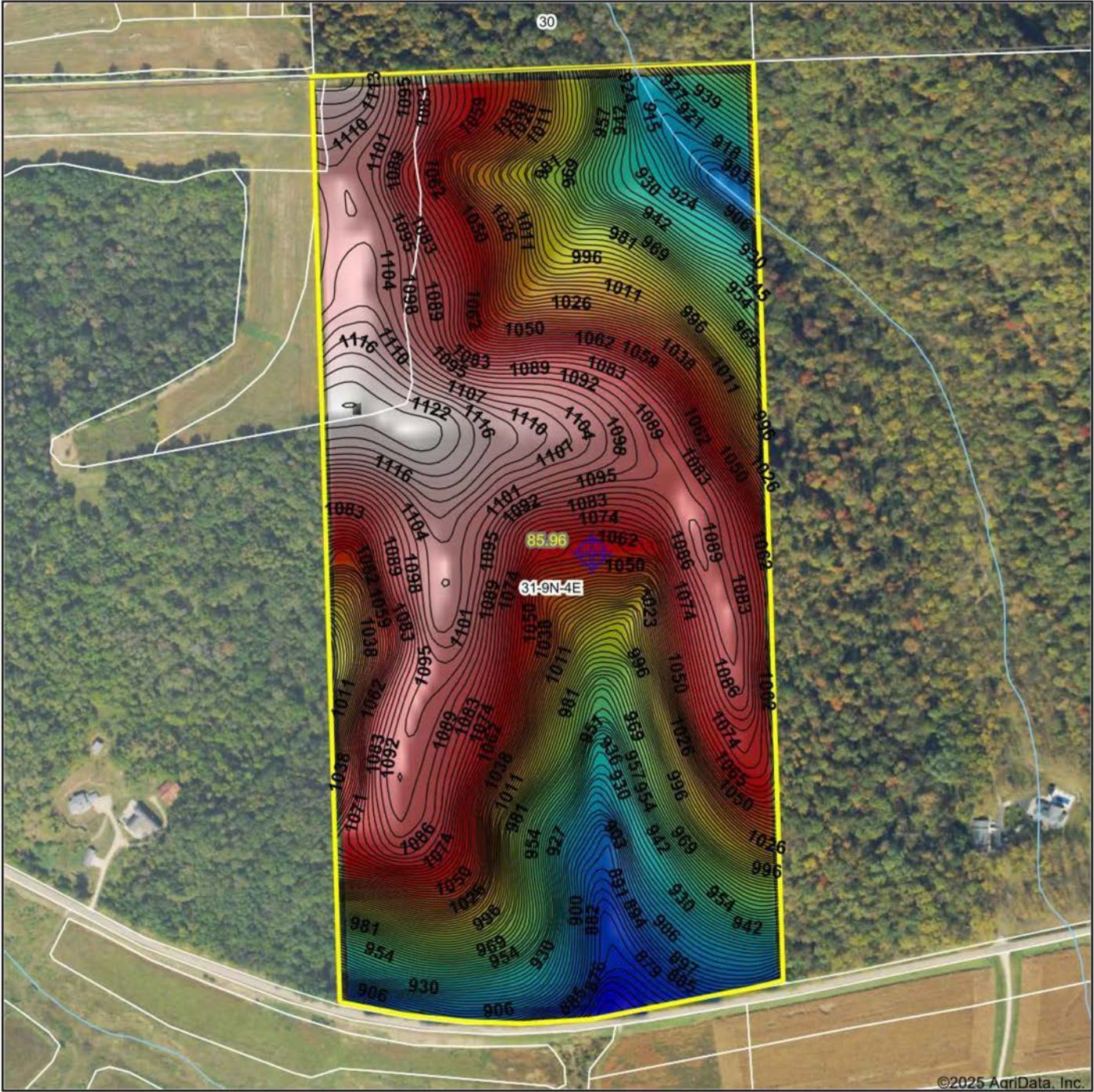
0ft 465ft 929ft



7/10/2025



# HILLSHADE MAP



Low Elevation High



Maps Provided By:



© AgriData, Inc. 2023 www.AgriDataInc.com

Field borders provided by Farm Service Agency as of 5/21/2008.

Source: USGS 10 meter dem

Interval(ft): 3

Min: 855.9

Max: 1,128.4

Range: 272.5

Average: 1,026.9

Standard Deviation: 71.36 ft

0ft 466ft 932ft



7/10/2025

**31-9N-4E**  
**Sauk County**  
**Wisconsin**

Boundary Center: 43° 13' 0.15, -90° 3' 40.89



# OVERVIEW MAP





# AGENT CONTACT

Jordan is a dedicated, hard-working land agent passionate about helping clients navigate the land market in Southern Wisconsin. Growing up in Waukesha County, Jordan has a deep appreciation for the area's unique charm and potential. Ever since he could put on his own boots, Jordan has been hunting and helping manage his family farms in Grant and Crawford counties to produce year after year. Traveling across the different landscapes across the state has allowed him to appreciate all of the landscapes and markets the state has to offer.

Graduating from Marquette University with his Master's in Management and playing 5 years of Division I lacrosse has instilled the importance of teamwork into his approach to the real estate business. After spending 2 years at the Midwest Land Group office helping over 100 agents across 13 states build their businesses, he is ready to get back to supporting the state that holds such a large place in his heart. Being a part of hundreds of transactions through the home office gave Jordan a deep accountability in the fact that all parties involved in a transaction must fully own their roles for the best outcome possible and is never afraid to go above and beyond for his clients to ensure they achieve their goals.

In his spare time, Jordan enjoys spending time with his wife Elaina. They enjoy diving deeper into their faith life through their local church and organizations such as Young Life and FCA. When he isn't spending time with his family, you'll likely find Jordan working out with his friends or spending some time out on the open water fishing. If you're in the market for recreational, farmland, or investment properties in Wisconsin, be sure to give Jordan a call!



**JORDAN SCHMID**

LAND AGENT

**262.737.8823**

[JordanSchmid@MidwestLandGroup.com](mailto:JordanSchmid@MidwestLandGroup.com)



## MidwestLandGroup.com

This property is being offered by Midwest Land Group, LLC. 913.674.8010. All information provided by Midwest Land Group, LLC or their agents was acquired from sources deemed accurate and reliable, however we do not warrant its accuracy or completeness. Midwest Land Group, LLC assumes no liability for error, omission or investment results. Midwest Land Group, LLC. Licensed in Alabama, Arkansas, Illinois, Indiana, Iowa, Kansas, Kentucky, Louisiana, Minnesota, Mississippi, Missouri, Montana, Nebraska, Ohio, Oklahoma, South Dakota, Tennessee, Texas, Wisconsin, and Wyoming.