

MIDWEST LAND GROUP PRESENTS

16 ACRES IN

PIERCE COUNTY WISCONSIN



MidwestLandGroup.com

MIDWEST LAND GROUP IS HONORED TO PRESENT

LUXURY HOME ON 16 ACRES JUST OUTSIDE OF TWIN CITIES

Welcome to the perfect junction of elite luxury lifestyle and serene rural charm. With more amenities than is possible to mention here, this 5-bedroom, 8-bathroom home is the epitome of class. The main level features four spacious bedrooms, each with its own attached bathroom. The master bedroom features its own laundry room, a huge walk-in closet, and a large, stunning shower. A second laundry room is located near the other three main level bedrooms and an office. The kitchen and formal dining room are a dream for entertaining. The kitchen is equipped with ample counter space and storage, two sinks, two dishwashers, a huge sub-zero fridge and freezer, a dual oven, and an indoor grill. Down one of the two staircases, the lower level offers a large living area, bar with sink and dishwasher, an additional bedroom with attached bath, an incredible theater room, a large home gym, and a billiards room accessible through a Murphy door.

Outside the house, you will find the same level of luxury as inside. Just out the door of the walk-out basement, a saltwater pool, gazebo, stunning lighting, and a series of beautiful rock waterfalls make indoor-outdoor entertaining as attractive as ever. The long, gated driveway circles around a helicopter pad with an adjacent 40'x50' hanger and ends at a pristine 4 stall garage with an additional two stalls in a separate bay. The 16 acres of rolling terrain offer sanctuary for all manner of wildlife as well as a feeling of seclusion that is hard to find.

Mere minutes to Prescott, Wisconsin, and a short hop across the river to the Twin Cities Metro allow for access to all the conveniences you could want, as well as a care-free commute to the office. This home is being offered with most non-décor furnishings included.

There is no way to fully grasp everything this property has to offer without seeing it yourself, so call Dan Mozdren at (952) 563-9809 to schedule your private showing!



PROPERTY FEATURES

PRICE: **\$2,900,000** | COUNTY: **PIERCE** | STATE: **WISCONSIN** | ACRES: **16**

- 9,469 square feet of living space
- 5 bedrooms, 8 bathrooms
- Attached bathroom in every bedroom
- Master suite with dedicated laundry and stunning bath
- Formal dining area
- Highly functional kitchen
- Two dishwashers and two sinks
- Sub-zero fridge and freezer
- Dual oven
- Indoor grill
- Walk-out basement, great for entertaining
- Wet bar
- Theater room
- Home gym
- Billiards room
- Most furnishings included
- Saltwater pool
- Six garage stalls
- Helicopter pad and 40'x50' hanger
- 16 +/- acres of rolling terrain
- Excellent hunting and recreation opportunities
- 10 minutes to Prescott, WI
- 20 minutes to Twin Cities Metro
- Prescott schools



LUXURY HOME

This 5-bedroom, 8-bathroom home is the epitome of class. Outside the house, you will find the same level of luxury as inside. Just out the door of the walk-out basement, a saltwater pool, gazebo, stunning lighting, and a series of beautiful rock waterfalls make indoor-outdoor entertaining as attractive as ever.



SIX GARAGE STALLS



HIGHLY FUNCTIONAL KITCHEN



MASTER SUITE

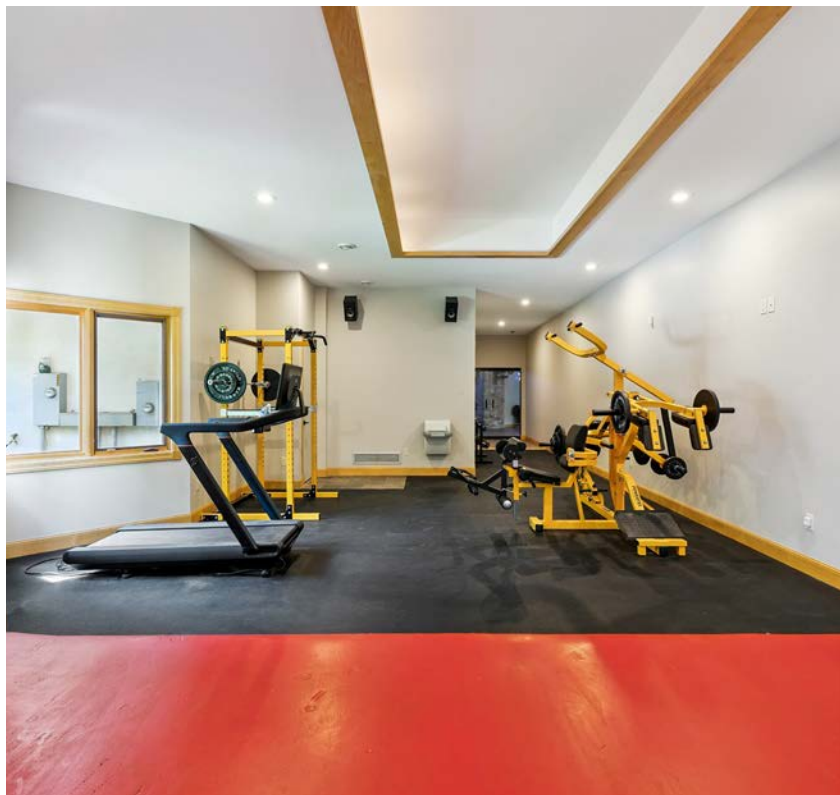
The master bedroom features its own laundry room, a huge walk-in closet, and a large, stunning shower.



THEATER ROOM



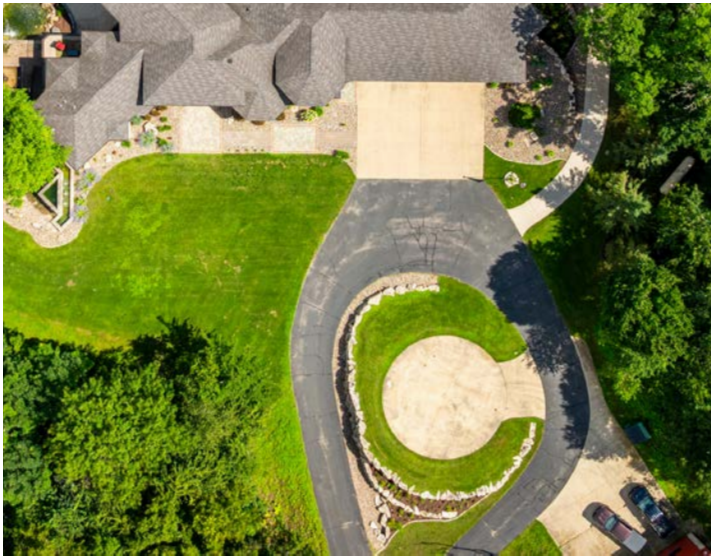
HOME GYM



5 BEDROOMS



HELICOPTER PAD AND HANGER



WET BAR



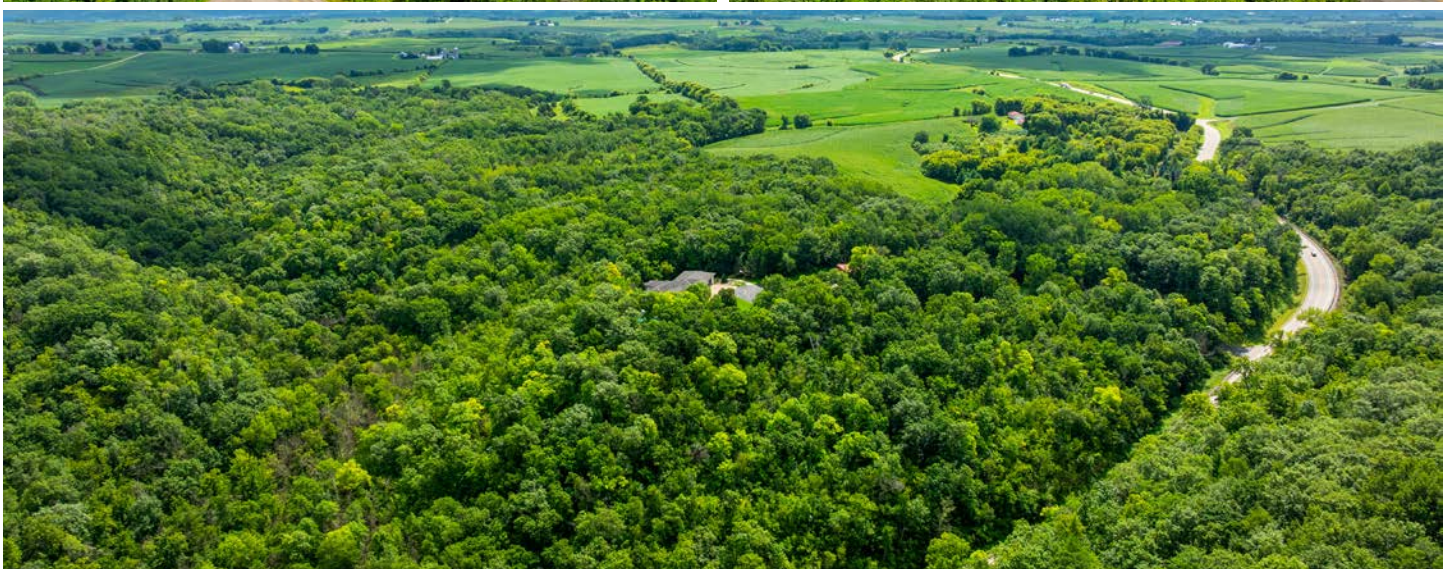
SECOND LAUNDRY ROOM



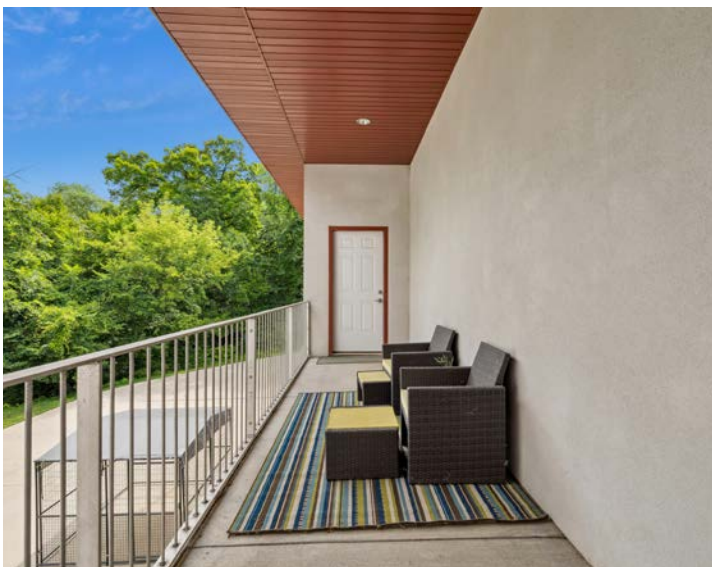
8 BATHROOMS



16 +/- ACRES OF ROLLING TERRAIN



ADDITIONAL PHOTOS



AERIAL MAP



©2025 AgriData, Inc.

Boundary Center: 44° 42' 42.96, -92° 39' 57.98

0ft 308ft 616ft



Maps Provided By:



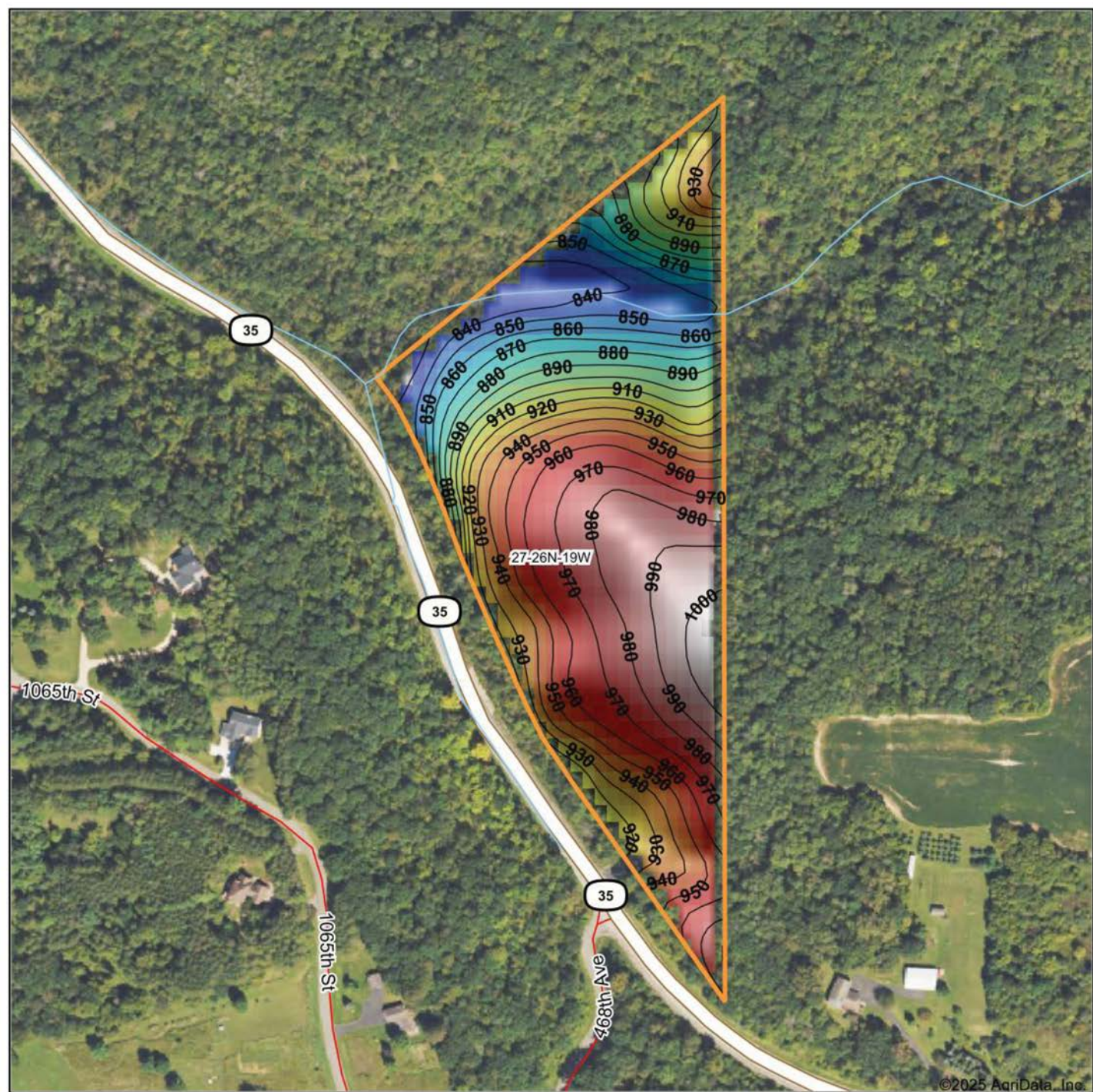
© AgriData, Inc. 2023 www.AgriDataInc.com

27-26N-19W
Pierce County
Wisconsin

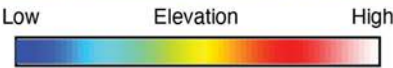


7/29/2025

HILLSHADE MAP



©2025 AgriData, Inc.

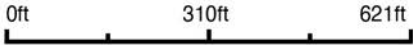


Maps Provided By:



© AgriData, Inc. 2023 www.AgriDataInc.com

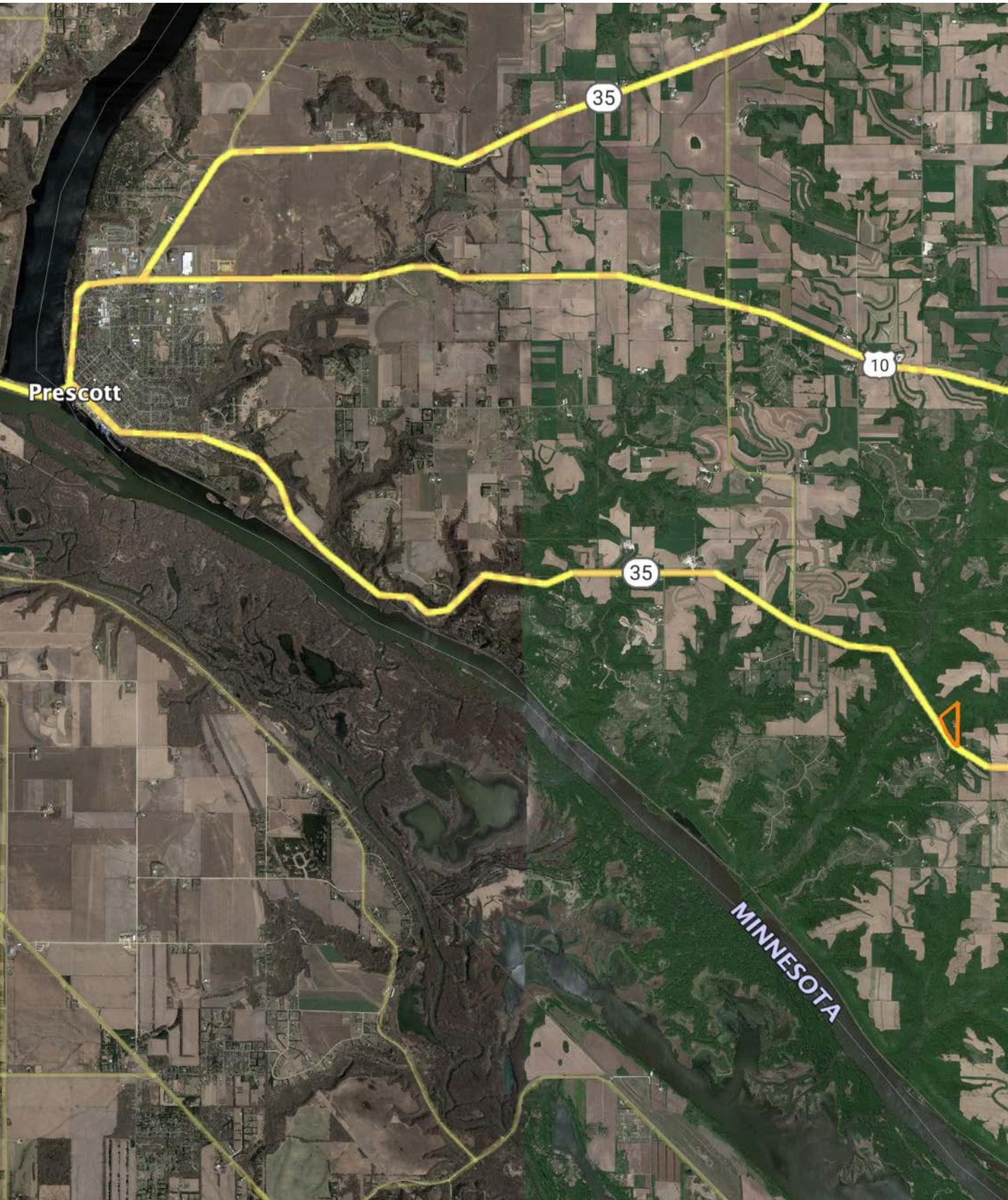
Source: USGS 10 meter dem
Interval(ft): 10
Min: 828.2
Max: 1,005.3
Range: 177.1
Average: 928.6
Standard Deviation: 48.49 ft



27-26N-19W
Pierce County
Wisconsin

Boundary Center: 44° 42' 42.96, -92° 39' 57.98

OVERVIEW MAP



AGENT CONTACT

Dan Mozdren understands the gratification that comes from hard work and dirty hands. Although he was born in St. Charles, IL, Dan grew up working on a large cattle ranch in Oklahoma. He graduated from Dewey High School in Dewey, OK, and Pittsburg State University in Pittsburg, KS.

Having worked in sales for several years in a variety of industries with proven success, this driven agent has realized his dream of working in an industry that he's passionate about. At Midwest Land Group, Dan appreciates that he can connect with people who share the same love for the outdoors, as well as develop long-term relationships while helping them achieve their property goals. An influential and bilingual communicator, this self-starter brings first-hand knowledge of, and passion for, the outdoors to each and every transaction, whether buying or selling, standing by his relentless commitment to serve others.

When he's not working, you can usually find Dan in the woods or on the water, whether that be deer hunting, or fishing for bass, pike, and muskie. He also enjoys the occasional golf game and spending time with his family. Dan lives in Jordan, MN, with his wife, Rachel and their two kids, Isaac and Ella. If you're in the market to buy or sell in Minnesota or Western Wisconsin, be sure to give Dan a call.



DAN MOZDREN, LAND AGENT
952.563.9809
DMozdren@MidwestLandGroup.com



MidwestLandGroup.com

This property is being offered by Midwest Land Group, LLC. 913.674.8010. All information provided by Midwest Land Group, LLC or their agents was acquired from sources deemed accurate and reliable, however we do not warrant its accuracy or completeness. Midwest Land Group, LLC assumes no liability for error, omission or investment results. Midwest Land Group, LLC. Licensed in Arkansas, Illinois, Iowa, Kansas, Minnesota, Missouri, Nebraska, Oklahoma, South Dakota, Tennessee, Texas, Wisconsin, and Wyoming.