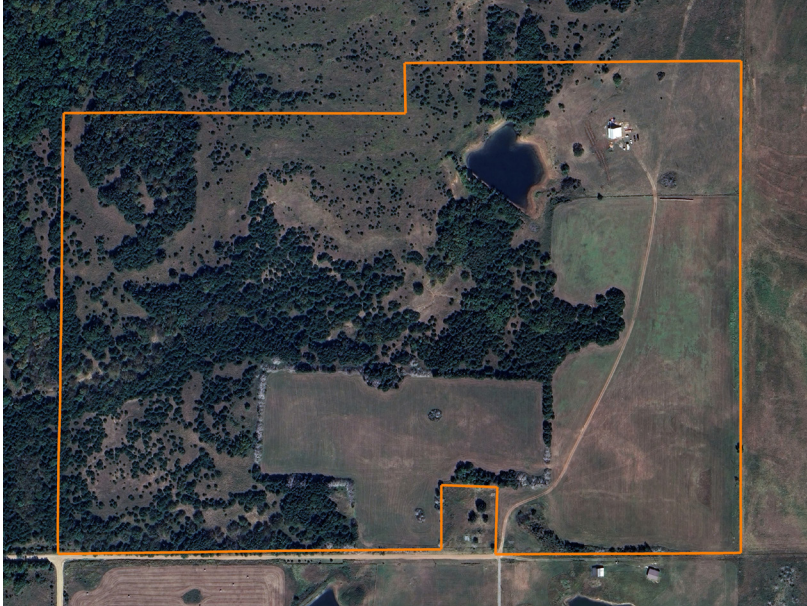


LAND FOR SALE

# 108 +/- ACRES WITH BARNDOMINIUM AND MULTIPLE USES

PRICE: **\$600,000**  
COUNTY: **PAWNEE**  
STATE: **OKLAHOMA**  
ACRES: **108**



## PROPERTY FEATURES

- 38'x38' two-story barndominium with three horse stalls on the main level (convertible to living space)
- Upstairs features a 30'x15' living area with kitchenette, bathroom, and mini split HVAC
- Approximately 30 +/- acres of hay pasture, ideal for grazing, haying, or food plots
- Property is fenced on three sides
- Crystal clear stocked pond and strong wildlife presence, including big deer on camera
- Multiple locations suitable for food plots, treestands, and blinds
- Utilities include a 170' deep water well, septic tank, IEC electric, and Hughes internet

For more information, contact:

**PAUL SMITH**, Land Agent

**918.397.2737** | [PSmith@MidwestLandGroup.com](mailto:PSmith@MidwestLandGroup.com)

**MidwestLandGroup.com**

This property is being offered by Midwest Land Group, LLC, 7111 W. 151st Street, Ste. 27, Overland Park, KS 66223, 913.674.8010. Licensed in AL, AR, IL, IN, IA, KS, KY, LA, MN, MS, MO, MT, NE, OH, OK, SD, TN, TX, WI, and WY.

