

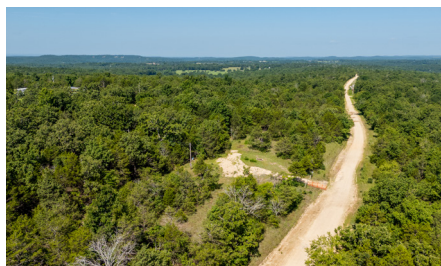
# LAND FOR SALE

## AFFORDABLE TRACT CLOSE TO BULL SHOALS



### PROPERTY FEATURES

- Well
- Electric established
- Fenced
- On dead-end road
- Timber
- Cleared
- Deer
- Turkey
- 25 minutes to Bull Shoals
- 14 minutes to Theodosia



PRICE: **\$47,500**

COUNTY: **OZARK**

STATE: **MISSOURI**

ACRES: **3.6**

For more information, contact:

**AUSTIN PHILLIPS**, Land Agent

**417.521.0095** | [APhillips@MidwestLandGroup.com](mailto:APhillips@MidwestLandGroup.com)

**MidwestLandGroup.com** BUYERS, SELLERS, AND LAND – CONNECTED

This property is being offered by Midwest Land Group, LLC, 7111 W. 151st Street, Ste. 27, Overland Park, KS 66223, 913.674.8010.  
Licensed in AL, AR, IL, IN, IA, KS, KY, LA, MN, MS, MO, MT, NE, OH, OK, SD, TN, TX, WI, and WY.

