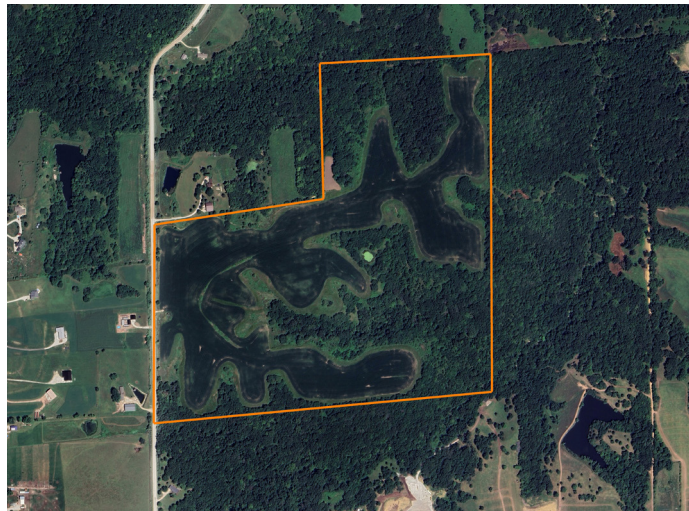


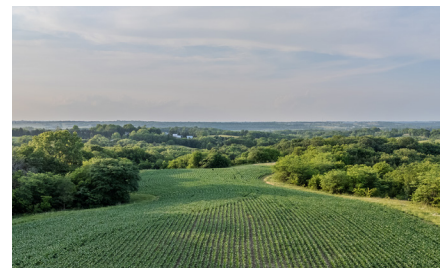
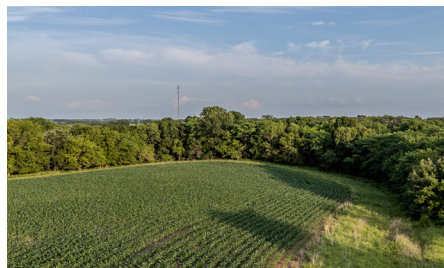
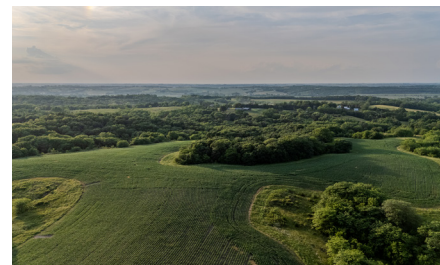
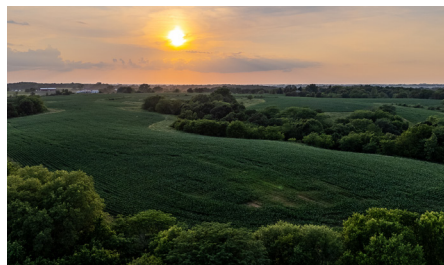
LAND FOR SALE

130 +/- ACRE PREMIER FARM - JUST 30 MINUTES FROM DES MOINES



PROPERTY FEATURES

- 67.80 FSA cropland acres
- 13.53 acres enrolled in CRP
- 54.27 acres - rented for 2025
- 32 miles from downtown Des Moines
- Nearly 60 acres of mature hardwood timber, including oak, hickory, and walnut
- 2.5 miles of timber edge - ideal for multiple stand locations
- Small pond, secluded CRP pockets, and thick bedding areas make this a trophy whitetail haven



PRICE: **\$267,000**

COUNTY: **BUCHANAN**

STATE: **MISSOURI**

ACRES: **80**

For more information, contact:

SEAN STEWART, Land Broker

515.259.3541 | SeanStewart@MidwestLandGroup.com

MidwestLandGroup.com BUYERS, SELLERS, AND LAND – CONNECTED

This property is being offered by Midwest Land Group, LLC, 7111 W. 151st Street, Ste. 27, Overland Park, KS 66223, 913.674.8010.
Licensed in AL, AR, IL, IN, IA, KS, KY, LA, MN, MS, MO, MT, NE, OH, OK, SD, TN, TX, WI, and WY.

