

MIDWEST LAND GROUP PRESENTS

80 ACRES IN

LOGAN COUNTY OKLAHOMA



MidwestLandGroup.com

MIDWEST LAND GROUP IS HONORED TO PRESENT

80 +/- ACRE MULTI-GENERATIONAL FARM IN LOGAN COUNTY, OKLAHOMA

Midwest Land Group is honored to offer this Logan County, Oklahoma, multi-generational farm to the open market. The farm has been under the same ownership since pre-Oklahoma Statehood of 1907 and is located south of the community of Meridian. The gentle rolling topography offers a wide array of features within the fully fenced 80 +/- acres. The 100' of elevation changes include pastures dissected by stands of timber. The northwest corner of the farm is where you will find the spring and several wet-weather creeks that traverse throughout the landscape. Several impressive rock outcroppings are sprinkled throughout the farm as well.

The farm is fronted on the southern flank by Seward Road, and electric service provided by OG&E on the western side of the farm, and electric service provided by PSO from the Carney Plant on the eastern side of the farm. The farm is an ideal candidate for investors or developers, hunters, and buyers with aspirations of a gorgeous build site. The property has been annexed by Oklahoma City. The owner will carry the note as an option. Location is ideal to Edmond, Shawnee, Guthrie, Oklahoma City, and Stillwater. Give Kevin Williams a call at (918) 514-3165 for more information.



PROPERTY FEATURES

PRICE: **\$1,100,000** | COUNTY: **LOGAN** | STATE: **OKLAHOMA** | ACRES: **80**

- Rolling topography
- Pasture and timber mix
- Spring
- Rock outcroppings
- 100' of elevation
- Fully perimeter fenced
- Electric (OG&E and PSO)
- County road frontage
- 60 minutes northwest of Shawnee
- 30 minutes southeast of Guthrie
- 30 minutes north of Luther
- 50 minutes northeast of Oklahoma City
- 45 minutes southwest of Stillwater
- 40 minutes to Edmond



80 +/- ACRES



ROLLING TOPOGRAPHY



SPRING



SEVERAL WET-WEATHER CREEKS



ADDITIONAL PHOTOS



TOPOGRAPHY MAP



Maps Provided By:



© AgriData, Inc. 2023

Source: USGS 10 meter dem

Interval(ft): 10.0

Min: 1,032.0

Max: 1,129.6

Range: 97.6

Average: 1,093.9

Standard Deviation: 17.19 ft

0ft 445ft 891ft

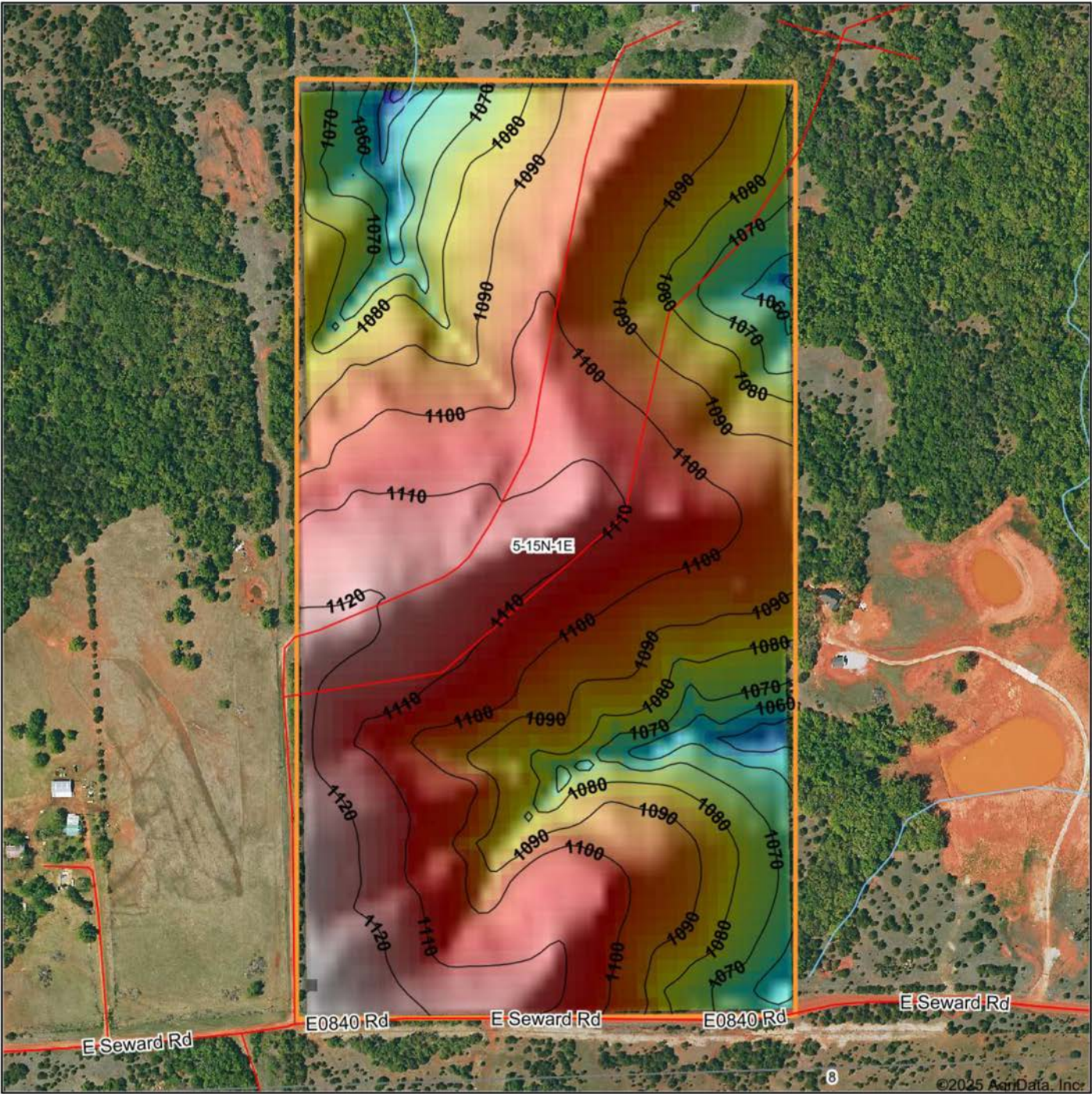


7/9/2025

5-15N-1E
Logan County
Oklahoma

Boundary Center: 35° 48' 3.93, -97° 13' 7.1

HILLSHADE MAP



Maps Provided By:



© AgriData, Inc. 2023 www.AgriDataInc.com

Source: USGS 10 meter dem
Interval(ft): 10
Min: 1,032.0
Max: 1,129.6
Range: 97.6
Average: 1,093.9
Standard Deviation: 17.19 ft

0ft 415ft 830ft

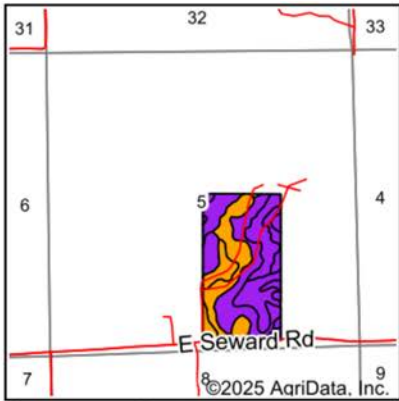
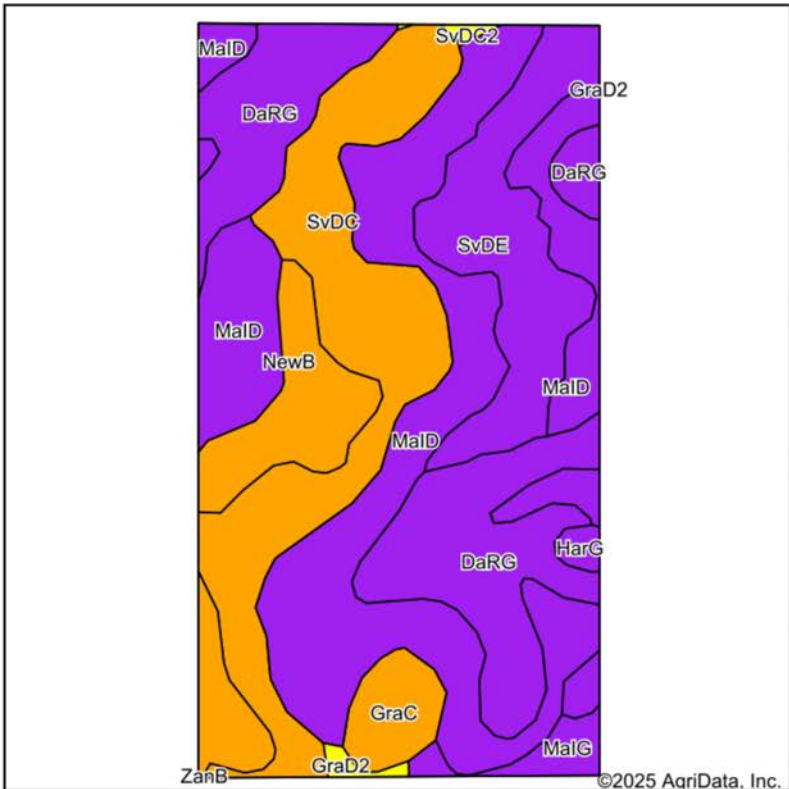


7/9/2025

5-15N-1E
Logan County
Oklahoma

Boundary Center: 35° 48' 3.93, -97° 13' 7.1

SOILS MAP



State: **Oklahoma**
County: **Logan**
Location: **5-15N-1E**
Township: **East Logan**
Acres: **76.39**
Date: **7/9/2025**



Maps Provided By:
surety
CUSTOMIZED ONLINE MAPPING
© AgriData, Inc. 2023 www.AgriDataInc.com



Soils data provided by USDA and NRCS.

Area Symbol: OK083, Soil Area Version: 24

Code	Soil Description	Acres	Percent of field	Non-Irr Class Legend	Restrictive Layer	Non-Irr Class *c	Range Production (lbs/acre/yr)	*n NCCPI Overall	*n NCCPI Corn	*n NCCPI Small Grains	*n NCCPI Soybeans	*n NCCPI Cotton
MaID	Masham-Ironmound complex, 5 to 15 percent slopes	26.01	34.0%		1.3ft. (Paralithic bedrock)	Vle	2561	28	22	27	24	15
DaRG	Darnell-Rock outcrop complex, 8 to 45 percent slopes	15.48	20.3%		0.9ft. (Paralithic bedrock)	Vlle	1740	17	17	12	12	6
SvDC	Stephenville-Darnell complex, 1 to 5 percent slopes	15.03	19.7%		2.7ft. (Paralithic bedrock)	Ille	3324	36	35	35	31	20
SvDE	Stephenville-Darnell complex, 5 to 15 percent slopes	8.97	11.7%		2.7ft. (Paralithic bedrock)	Vle	3324	35	34	35	31	17
NewB	Newalla fine sandy loam, 1 to 5 percent slopes	6.38	8.4%		4.8ft. (Densic bedrock)	Ille	3864	49	34	49	47	30
GraC	Grainola silty clay loam, 3 to 5 percent slopes	2.29	3.0%		2.6ft. (Paralithic bedrock)	Ille	3724	42	31	42	37	23
MaIG	Masham-Ironmound complex, 15 to 40 percent slopes	1.32	1.7%		1ft. (Paralithic bedrock)	Vlle	2133	9	8	9	6	5
HarG	Harrah fine sandy loam, 3 to 45 percent slopes	0.43	0.6%		> 6.5ft.	Vlle	4080	49	47	46	49	31
GraD2	Grainola silty clay loam, 5 to 8 percent slopes, eroded	0.31	0.4%		3.1ft. (Paralithic bedrock)	IVe	0	36	24	35	32	27

Soils data provided by USDA and NRCS.

OVERVIEW MAP



AGENT CONTACT

Kevin Williams loves the outdoors, family, friends, and his country. Having grown up in the shadow of his grandfather, Kevin learned everything he could about Northeast Oklahoma from the lifelong hunter, fisherman, team roper and Veteran. Born in Bartlesville, Oklahoma, Kevin was raised in Nowata and attended both the University of Oklahoma and Oklahoma State University, ultimately earning degrees in Turf Management and Liberal Studies. He enlisted in the United States Army and served as a paratrooper, combat medic and soldier, serving two combat tours in Iraq, earning numerous awards. Early in his career, his love for golf took him to shaping and maintaining golf courses in Oklahoma and as far away as Jamaica. He then went on to have a successful career in medical sales. An experienced deer hunter, avid fisherman and sports fan, Kevin enjoys working at Midwest Land Group where he can share his passion for the outdoors, wildlife, and country. A trusted and proven salesperson, Kevin is dedicated to his customers' needs. When not golfing, you can usually find him in the woods searching for a buck, fishing for largemouth bass, or volunteering with youth and Veterans. He has served as the boat captain for a nearby high school fishing team, as well as volunteered with Fishing for Freedom on lakes in Missouri, Oklahoma, and Texas. Kevin and his partner, Nichole, make their home in Oologah, Oklahoma. Together, they have five children. Give Kevin a call today to experience the Midwest Land Group difference!



KEVIN WILLIAMS,
LAND AGENT
918.514.3165
KWilliams@MidwestLandGroup.com



MidwestLandGroup.com

This property is being offered by Midwest Land Group, LLC. 913.674.8010. All information provided by Midwest Land Group, LLC or their agents was acquired from sources deemed accurate and reliable, however we do not warrant its accuracy or completeness. Midwest Land Group, LLC assumes no liability for error, omission or investment results. Midwest Land Group, LLC. Licensed in Alabama, Arkansas, Illinois, Indiana, Iowa, Kansas, Kentucky, Louisiana, Minnesota, Mississippi, Missouri, Montana, Nebraska, Ohio, Oklahoma, South Dakota, Tennessee, Texas, Wisconsin, and Wyoming.