

MIDWEST LAND GROUP PRESENTS

79 ACRES IN

LOGAN COUNTY OKLAHOMA



MidwestLandGroup.com

MIDWEST LAND GROUP IS HONORED TO PRESENT

WELL SET-UP 79+/- ACRE HUNTING GETAWAY

If you're after seclusion, wildlife, and room to roam, the Logan 79 delivers. Located off a quiet dirt county road, this 79 acre hunting retreat is tucked away from the noise but still just 50 minutes to Edmond and an hour to downtown OKC. It's private, functional, and full of potential for the hunter, land steward, or weekend escape-seeker.

The land features 80 feet of elevation change, a strong mix of cover and openings, and established trails that make it easy to navigate by vehicle or ATV. It's fully fenced and set up to hunt with established stands and feeder locations, quality food plot openings, and a mix of mast-producing trees like oaks, persimmons, and pecans. A small pond and wet-weather creek add water diversity, and a large 40 acre lake just across the road brings in ducks that could offer the potential for future

waterfowl hunting with some vision and dirt work on the west side.

A tucked-away campsite includes a storage container, a working hand pump water well, and a small orchard with peach, pear, and apple trees. Whether you're looking to bag a trophy whitetail, chase spring gobblers, or just unplug around a fire, this place sets up well for all of it. Surrounded on all four sides by larger tracts, this 79 acres is situated well to give you chances at mature deer.

The Logan 79 is a rare blend of privacy and purpose — a turn-key recreational tract that's ready for a new set of hands to enjoy it. Call Ryan Huggins at (405) 481-4647 for your private tour!

PROPERTY FEATURES

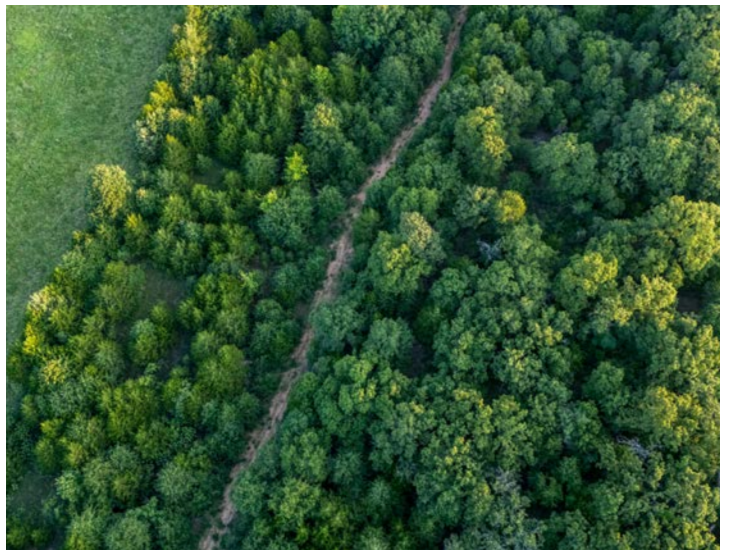
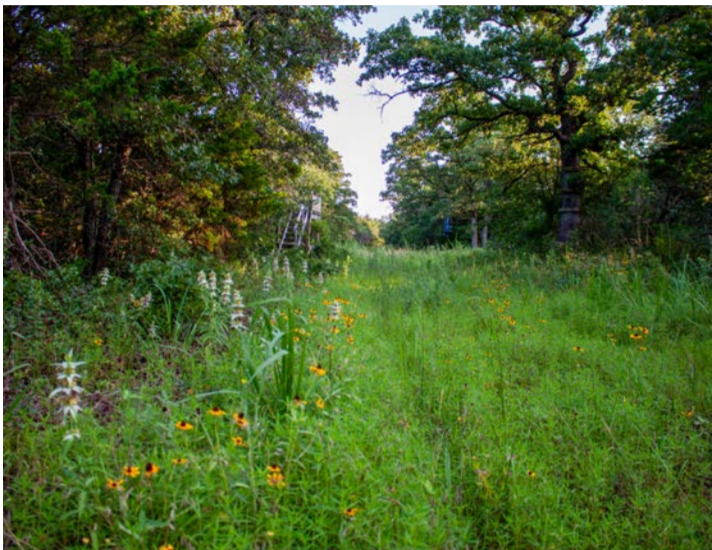
PRICE: **\$397,300** | COUNTY: **LOGAN** | STATE: **OKLAHOMA** | ACRES: **79**

- 80' of elevation change
- Trails through the entire property
- Campsite with storage container, orchard, working hand pump well
- Diverse mix of good cover and openings
- Whitetail deer, wild hogs, and turkey
- Established stand and feeder locations
- Oaks, persimmons, pecan, peach, pear, plum, and apple trees
- Great food plot locations
- Pond and wet-weather creek
- Fully fenced
- Close proximity to 40 acre lake
- Surrounded on all 4 sides by larger tracts
- Very secluded and private
- 50 minutes to Edmond
- 60 minutes to downtown Oklahoma City

ABUNDANT WILDLIFE



TRAILS THROUGHOUT



POND AND WET-WEATHER CREEK



ESTABLISHED STANDS AND FEEDERS



AERIAL MAP



©2025 AgriData, Inc.

Boundary Center: 35° 48' 33.08, -97° 8' 43.57

0ft 446ft 892ft



Maps Provided By:



© AgriData, Inc. 2023

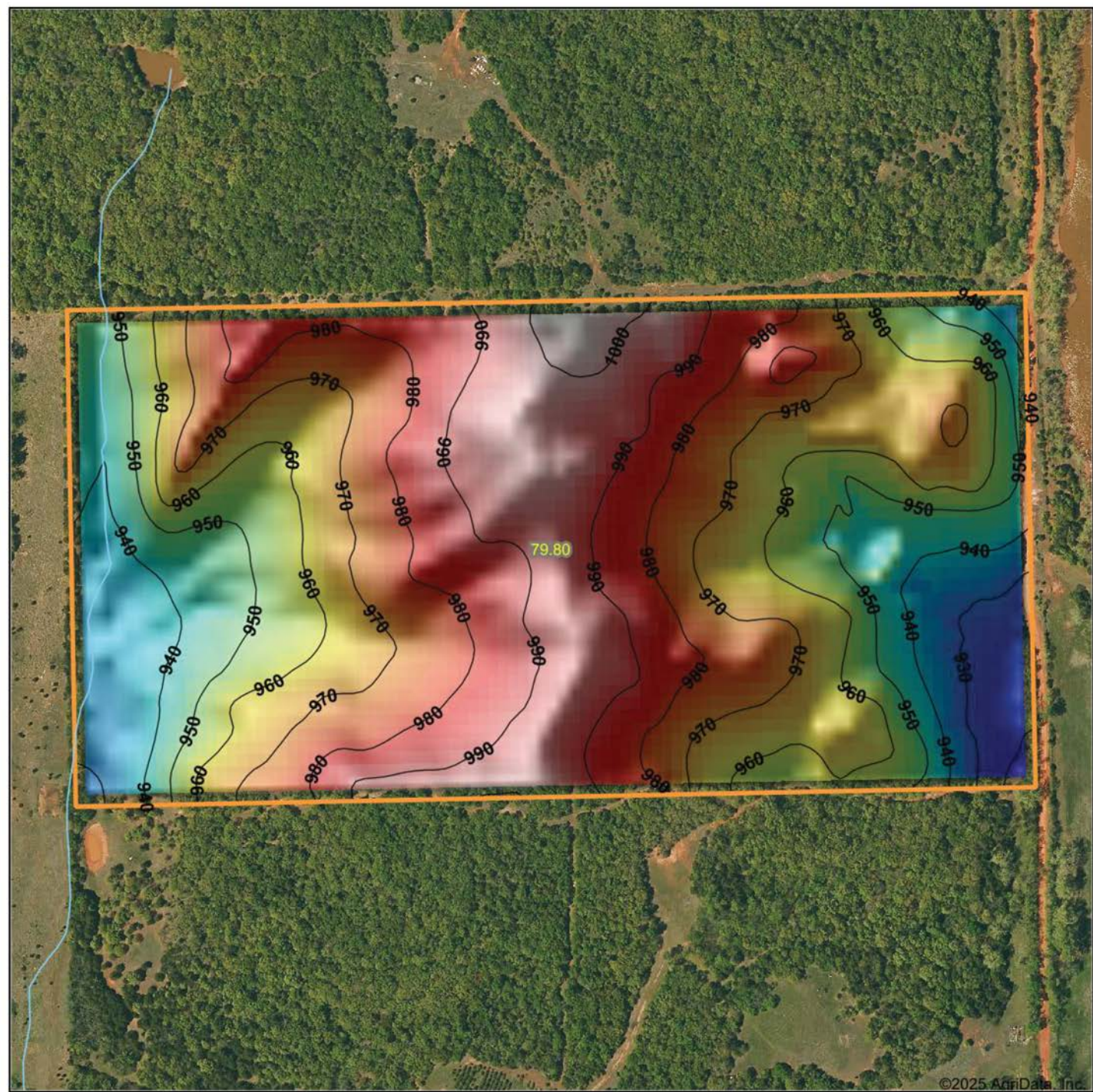
www.AgriDataInc.com

1-15N-1E
Logan County
Oklahoma



7/17/2025

HILLSHADE MAP



©2025 AgriData, Inc.



Maps Provided By:



© AgriData, Inc. 2023

www.AgriDataInc.com

Source: USGS 10 meter dem
Interval(ft): 10
Min: 917.8
Max: 1,003.9
Range: 86.1
Average: 966.8
Standard Deviation: 19.42 ft

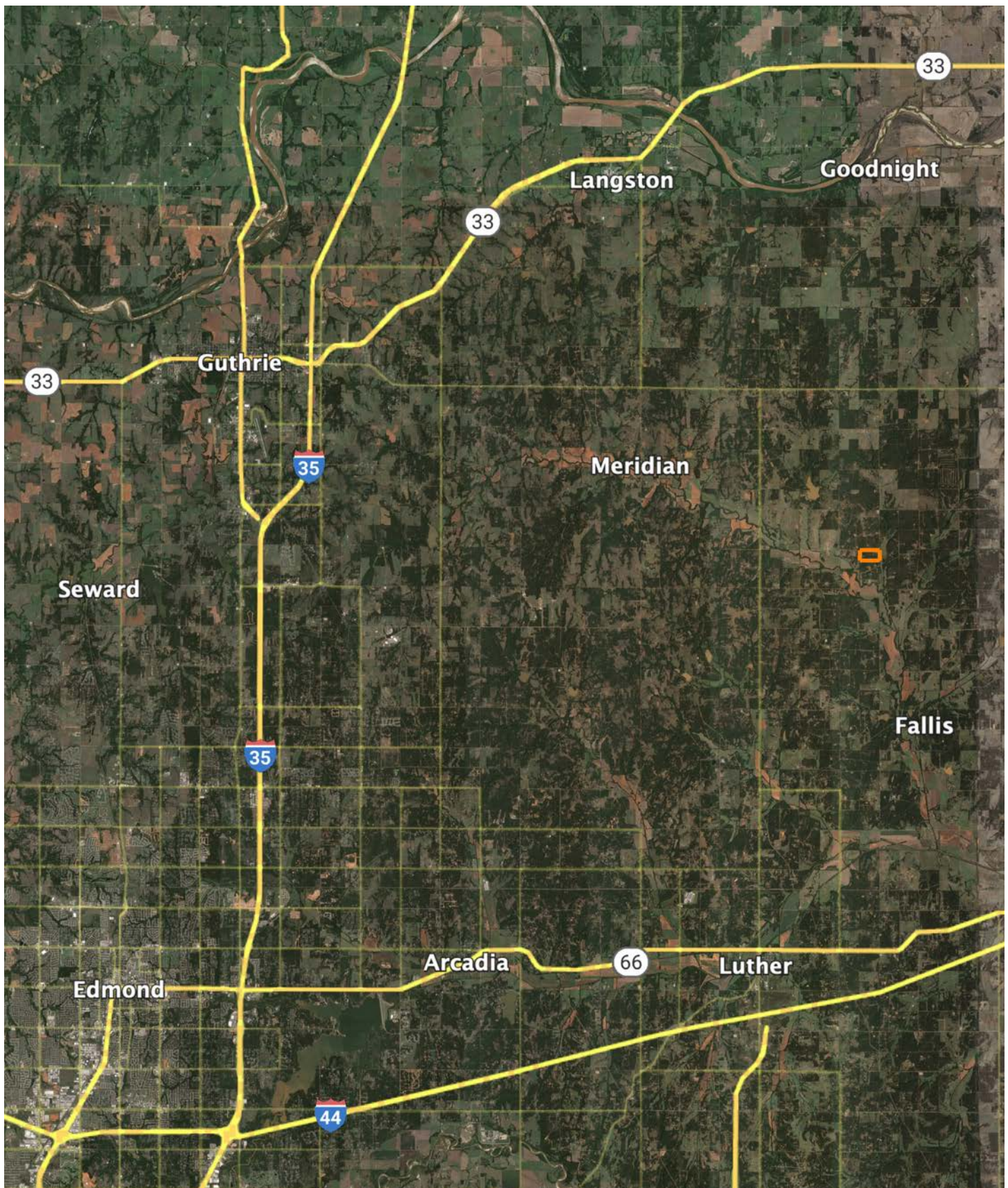


7/17/2025

1-15N-1E
Logan County
Oklahoma

Boundary Center: 35° 48' 33.08, -97° 8' 43.57

OVERVIEW MAP



AGENT CONTACT

Ryan Huggins grew up in Ardmore, Oklahoma, where his passion for land was instilled at an early age. He and his father, a wildlife biologist, spent countless hours in the deer woods, learning firsthand about habitat, conservation, and the deep connection people have with the land. Those early experiences didn't just shape his love for the outdoors—they laid the foundation for his career in land sales, where he now helps others find and sell their own piece of ground.

Faith and family are the why behind everything Ryan does. For years, he has been deeply involved with his church community, leading worship and serving in various volunteer, staff, and pastoral roles. He approaches his work with the same heart for service, believing that every land transaction is more than a sale—it's an opportunity to make a meaningful impact. Ryan currently lives in McCloud with his wife, Ashley, and their four children, finding his greatest joy in the time spent with them.

Before joining Midwest Land Group, Ryan built and ran a thriving home repair and remodeling business in the OKC metro for nearly a decade. His reputation for professionalism, integrity, and delivering top-tier service made him a trusted name in his industry—qualities he now brings to every land deal. With a sharp eye for both a property's current value and future potential, Ryan helps buyers see beyond what a piece of land is to what it can become. As he puts it, "I'm creative and can help people catch a vision for what's possible. I'm a constant learner—every piece of ground I walk, every interaction I have, and every book I read brings something new to the next client I serve."

With a dedication to providing outstanding service, a tireless work ethic, and a true passion for land, Ryan stands out in the industry. Whether he's selling a cherished farm or helping clients secure their dream hunting retreat, he ensures every step is smooth, successful, and deeply rewarding.



RYAN HUGGINS

LAND AGENT

405.481.4647

RHuggins@MidwestLandGroup.com



MidwestLandGroup.com

This property is being offered by Midwest Land Group, LLC. 913.674.8010. All information provided by Midwest Land Group, LLC or their agents was acquired from sources deemed accurate and reliable, however we do not warrant its accuracy or completeness. Midwest Land Group, LLC assumes no liability for error, omission or investment results. Midwest Land Group, LLC. Licensed in Alabama, Arkansas, Illinois, Indiana, Iowa, Kansas, Kentucky, Louisiana, Minnesota, Mississippi, Missouri, Montana, Nebraska, Ohio, Oklahoma, South Dakota, Tennessee, Texas, Wisconsin, and Wyoming.