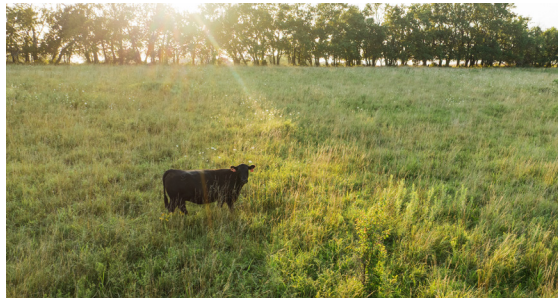


LAND FOR SALE

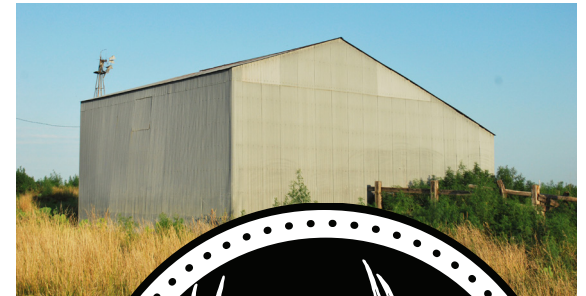
# 80 +/- ACRE PASTURE WITH BUILD SITE IN JEFFERSON COUNTY

PRICE: **\$368,147**  
COUNTY: **JEFFERSON**  
STATE: **KANSAS**  
ACRES: **80**



## PROPERTY FEATURES

- 79.98 +/- total acres
- 1 +/- acre pond
- Great build site
- Water and electric meters available
- Beautiful country views
- Well-maintained year-round gravel road
- Pasture land with perimeter fencing
- Mineral rights intact and transfer
- Valley Falls School District
- 2024 taxes: \$670.92
- 2 miles to Valley Falls, KS
- 27 miles to Topeka, KS



For more information, contact:

**DREW YARKOSKY**, Land Agent

**816.599.3647** | [DYarkosky@MidwestLandGroup.com](mailto:DYarkosky@MidwestLandGroup.com)

**MidwestLandGroup.com**



This property is being offered by Midwest Land Group, LLC, 7111 W. 151st Street, Ste. 27, Overland Park, KS 66223, 913.674.8010.  
Licensed in AL, AR, IL, IN, IA, KS, KY, LA, MN, MS, MO, MT, NE, OH, OK, SD, TN, TX, WI, and WY.