

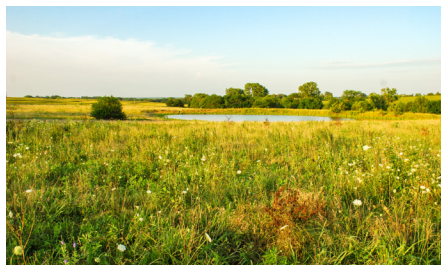
LAND FOR SALE

IDEAL 154 +/- ACRE PASTURE GROUND IN JEFFERSON COUNTY



PROPERTY FEATURES

- 153.91 +/- total acres
- Quality pasture ground
- Pond and creek access for water
- 25 +/- acres of native grasses cut for hay
- Road frontage on all sides
- Rural water and electric are both available
- 4 and 5 strand barbed wire
- 2024 taxes: \$1,069.00
- 3 miles to Valley Falls, KS



For more information, contact:

DREW YARKOSKY, Land Agent

816.599.3647 | DYarkosky@MidwestLandGroup.com

MidwestLandGroup.com

BUYERS, SELLERS, AND LAND – CONNECTED

This property is being offered by Midwest Land Group, LLC, 7111 W. 151st Street, Ste. 27, Overland Park, KS 66223, 913.674.8010.
Licensed in AL, AR, IL, IN, IA, KS, KY, LA, MN, MS, MO, MT, NE, OH, OK, SD, TN, TX, WI, and WY.



PRICE: **\$679,205**

COUNTY: **JEFFERSON**

STATE: **KANSAS**

ACRES: **154**

