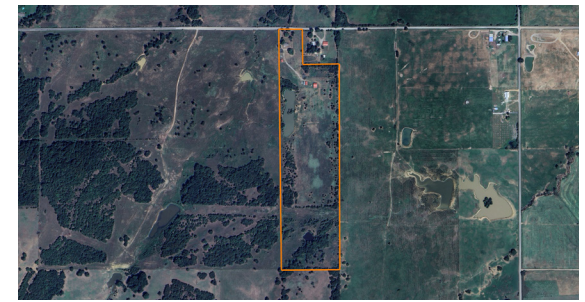


LAND FOR SALE

36 +/- ACRE HORSE AND CATTLE RANCHETTE NEAR LAKE EUFAULA

PRICE: **\$319,000**
COUNTY: **HASKELL**
STATE: **OKLAHOMA**
ACRES: **36**



PROPERTY FEATURES

- 36+/- acres of 75% pasture, 25% timber
- 3 bed / 1.5 bath brick home (built in 1995)
- All appliances convey
- Paved county road frontage
- Turn-key accommodating for horses and cattle
- 40'x180' steel frame structure
- 30'x40' metal barn with electric & water
- 20'x40' lean-to with stalls
- 24'x40' and 20'x30' metal-sided lean-tos
- 1.5 miles from Highway 9
- Within 15 minutes of multiple Lake Eufaula access points

For more information, contact:

LAUREN McDONALD, Land Agent

918.928.3345 | LMcDonald@MidwestLandGroup.com

MidwestLandGroup.com

This property is being offered by Midwest Land Group, LLC, 7111 W. 151st Street, Ste. 27, Overland Park, KS 66223, 913.674.8010. Licensed in AL, AR, IL, IN, IA, KS, KY, LA, MN, MS, MO, MT, NE, OH, OK, SD, TN, TX, WI, and WY.

