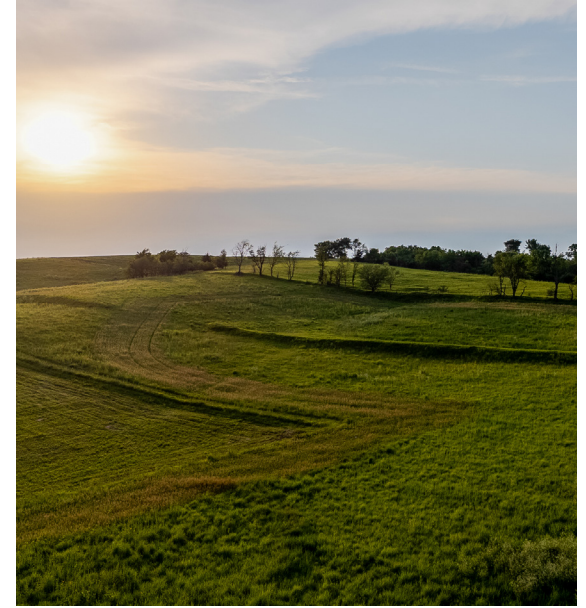


LAND FOR SALE

28.24 ACRES IN BEAUTIFUL ROCKY RIDGE II SUBDIVISION IN GUTHRIE COUNTY

PRICE: **\$295,000**
COUNTY: **GUTHRIE**
STATE: **IOWA**
ACRES: **28.24**



PROPERTY FEATURES

- Premier location in Central Iowa
- Gently rolling terrain - ideal for building
- Peaceful, private setting
- Passive income stream
- Shared pond
- Outdoor lifestyle - room to run, build, play, and grow
- Easy commute - 25 minutes to Waukee, 40 minutes to Des Moines



For more information, contact:

SEAN STEWART, Land Broker

515.259.3541 | SeanStewart@MidwestLandGroup.com

MidwestLandGroup.com



This property is being offered by Midwest Land Group, LLC, 7111 W. 151st Street, Ste. 27, Overland Park, KS 66223, 913.674.8010.
Licensed in AL, AR, IL, IN, IA, KS, KY, LA, MN, MS, MO, MT, NE, OH, OK, SD, TN, TX, WI, and WY.