

MIDWEST LAND GROUP PRESENTS



20 ACRES  
**DELAWARE COUNTY, OK**

0000 Highway 59, Jay, Oklahoma, 74346





MIDWEST LAND GROUP IS HONORED TO PRESENT

# 20 +/- ACRE DELAWARE COUNTY TIMBER TRACT WITH UNLIMITED POTENTIAL

---

Located in Delaware County, north of the community of Kansas, you will find this 20 +/- acre property tucked below the canopy of towering pines and hardwoods. Several building spots are located throughout the flat, gentle to steep sloping land. Electric is nearby and is easily accessible. From the moment you approach the property, you are instantly encapsulated by a mixture of mature hardwoods and pines. The seclusion of this small

acreage tract is ideal for a future homesite or to utilize the property as a hunting destination or recreation getaway. The acreage is frontage by Highway 59 and S 620 Road. Covenants and restrictions shall govern on this Delaware County property. If you are looking to invest your money into a great small acreage hunting, building, or recreational tract, give Kevin Williams a call at (918) 514-3165 today for your personal tour!





# PROPERTY FEATURES

PRICE: **\$261,500** | COUNTY: **DELAWARE** | STATE: **OKLAHOMA** | ACRES: **20**

---

- Massive pines and hardwoods
- Highway and County road frontage
- Electric available
- Fabulous build sites
- Tremendous hunting
- Investment opportunity
- Close proximity to Lake Eucha, Grand Lake, and Spavinaw Lake
- Covenants and restrictions to govern
- Colcord Public Schools
- 30 minutes to Siloam Springs, Arkansas
- 1.5 hours to Joplin, Missouri
- 1.5 hours to Tulsa





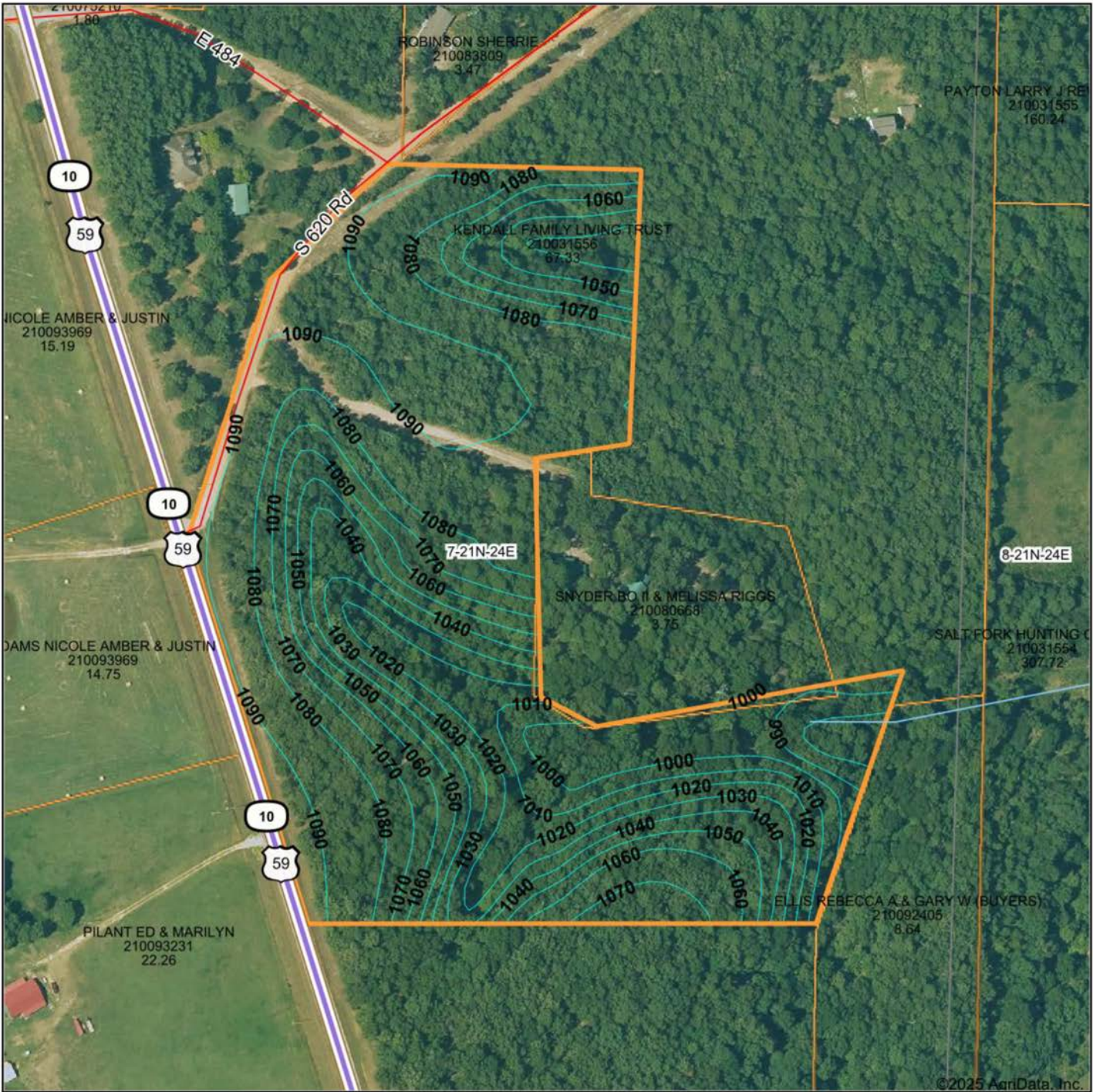
# TIMBER TRACT

---





# TOPOGRAPHY MAP



Maps Provided By:



© AgriData, Inc. 2023

www.AgriDataInc.com

Source: USGS 10 meter dem

Interval(ft): 10.0

Min: 975.1

Max: 1,094.7

Range: 119.6

Average: 1,057.0

Standard Deviation: 31.43 ft

0ft 259ft 518ft



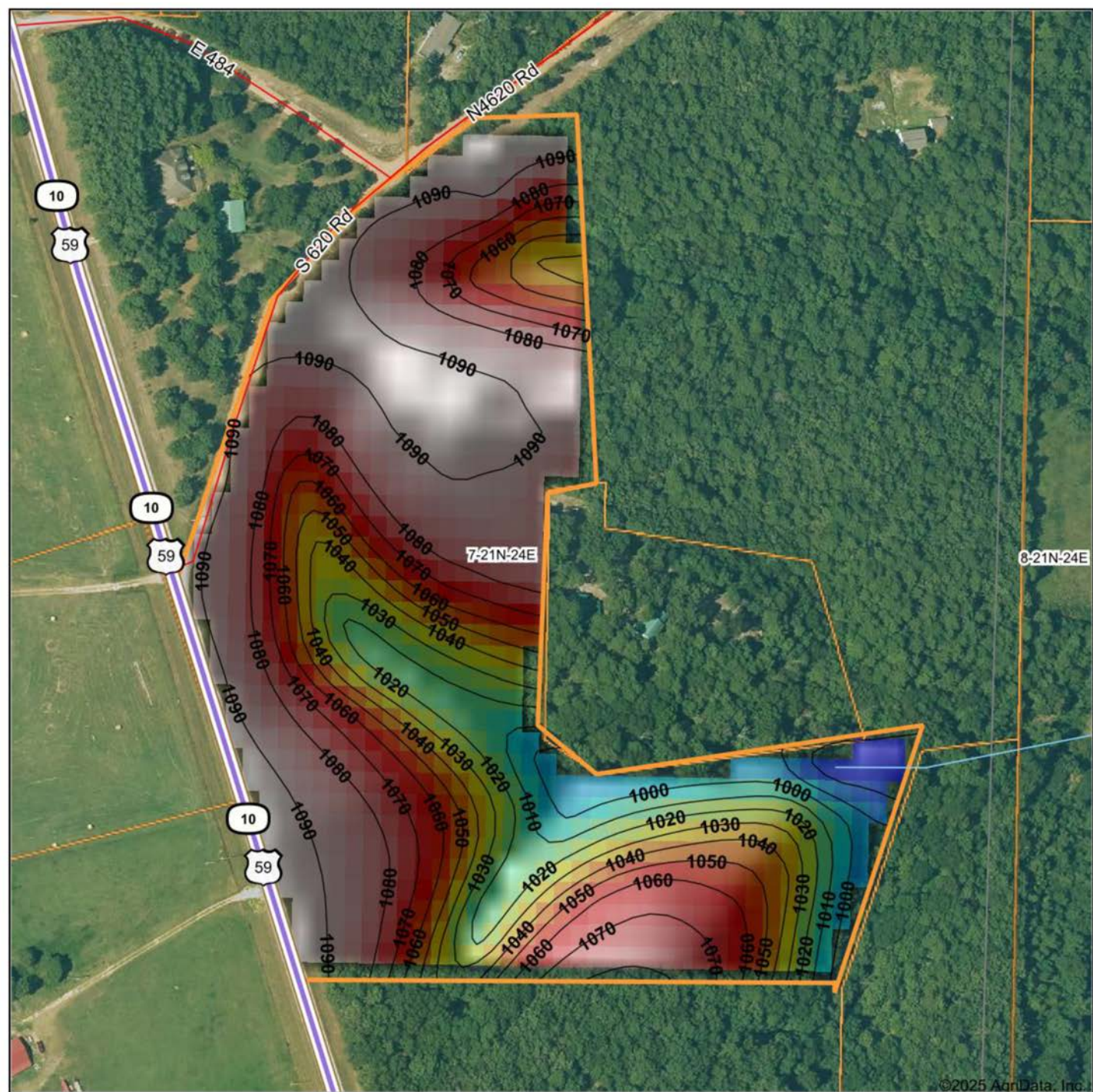
7/8/2025

7-21N-24E  
Delaware County  
Oklahoma

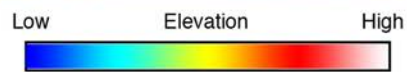
Boundary Center: 36° 18' 47.48, -94° 46' 33.07



# HILLSHADE MAP



©2025 AgriData, Inc.



Maps Provided By:  
**surety**  
CUSTOMIZED ONLINE MAPPING  
© AgriData, Inc. 2023 [www.AgriDataInc.com](http://www.AgriDataInc.com)

Source: USGS 10 meter dem  
Interval(ft): 10  
Min: 975.1  
Max: 1,093.1  
Range: 118.0  
Average: 1,060.5  
Standard Deviation: 29.46 ft

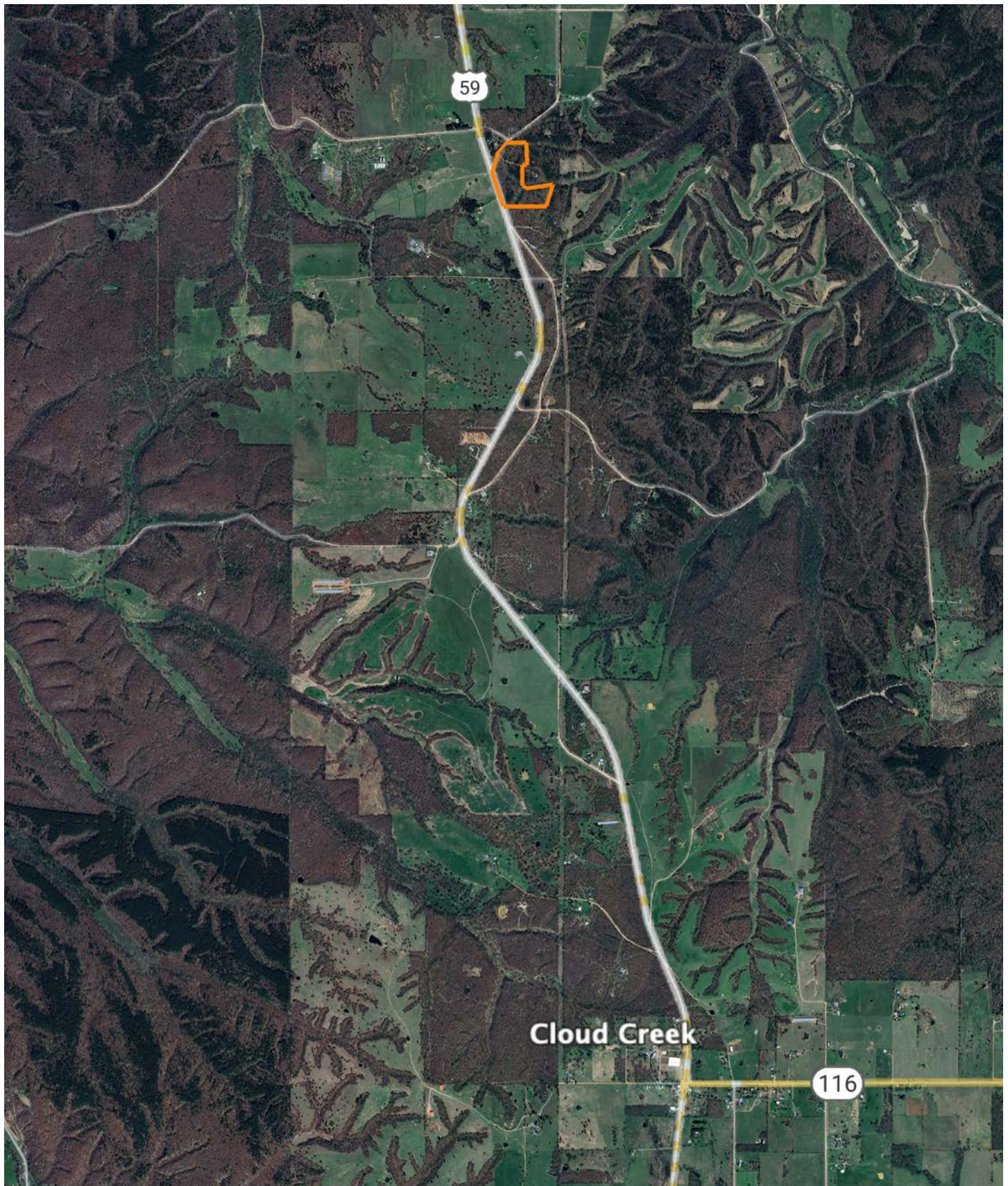


**7-21N-24E**  
**Delaware County**  
**Oklahoma**

Boundary Center: 36° 18' 47.99, -94° 46' 33.21



# OVERVIEW MAP





# AGENT CONTACT

Kevin Williams loves the outdoors, family, friends, and his country. Having grown up in the shadow of his grandfather, Kevin learned everything he could about Northeast Oklahoma from the lifelong hunter, fisherman, team roper and Veteran. Born in Bartlesville, Oklahoma, Kevin was raised in Nowata and attended both the University of Oklahoma and Oklahoma State University, ultimately earning degrees in Turf Management and Liberal Studies. He enlisted in the United States Army and served as a paratrooper, combat medic and soldier, serving two combat tours in Iraq, earning numerous awards. Early in his career, his love for golf took him to shaping and maintaining golf courses in Oklahoma and as far away as Jamaica. He then went on to have a successful career in medical sales. An experienced deer hunter, avid fisherman and sports fan, Kevin enjoys working at Midwest Land Group where he can share his passion for the outdoors, wildlife, and country. A trusted and proven salesperson, Kevin is dedicated to his customers' needs. When not golfing, you can usually find him in the woods searching for a buck, fishing for largemouth bass, or volunteering with youth and Veterans. He has served as the boat captain for a nearby high school fishing team, as well as volunteered with Fishing for Freedom on lakes in Missouri, Oklahoma, and Texas. Kevin and his partner, Nichole, make their home in Oologah, Oklahoma. Together, they have five children. Give Kevin a call today to experience the Midwest Land Group difference!



**KEVIN WILLIAMS,**

LAND AGENT

**918.514.3165**

[KWilliams@MidwestLandGroup.com](mailto:KWilliams@MidwestLandGroup.com)



## MidwestLandGroup.com

This property is being offered by Midwest Land Group, LLC. 913.674.8010. All information provided by Midwest Land Group, LLC or their agents was acquired from sources deemed accurate and reliable, however we do not warrant its accuracy or completeness. Midwest Land Group, LLC assumes no liability for error, omission or investment results. Midwest Land Group, LLC. Licensed in Alabama, Arkansas, Illinois, Indiana, Iowa, Kansas, Kentucky, Louisiana, Minnesota, Mississippi, Missouri, Montana, Nebraska, Ohio, Oklahoma, South Dakota, Tennessee, Texas, Wisconsin, and Wyoming.