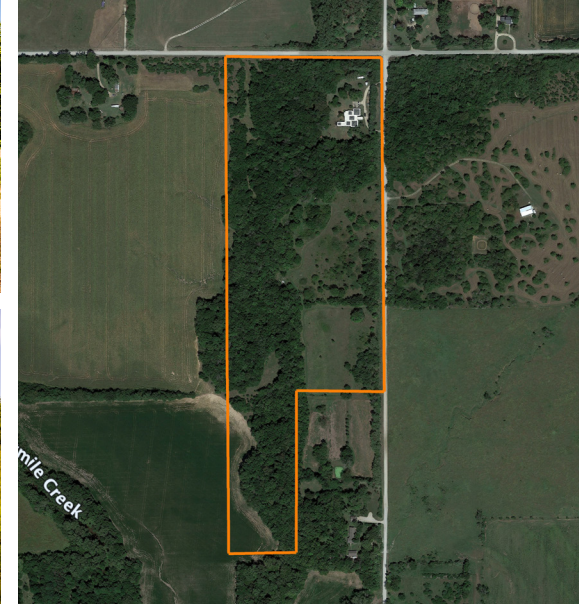


LAND FOR SALE

# LARGE HOME ON 38 +/- ACRES NEAR DOUGLASS, KANSAS

PRICE: **\$700,000**  
COUNTY: **BUTLER**  
STATE: **KANSAS**  
ACRES: **38**



## PROPERTY FEATURES

- 4,762 square feet home
- 4 bedrooms and 3 bathrooms
- Large open floor plan
- Spacious master suite
- 3-car attached garage
- Well and rural water
- 38 +/- acres
- Large mature timber
- Wet-weather creek
- 4 miles to Douglass, KS
- 4.5 miles to Rose Hill, KS
- 26 miles to Downtown Wichita, KS



For more information, contact:

**SHAUN REID**, Land Agent

**316.210.6680** | [SReid@MidwestLandGroup.com](mailto:SReid@MidwestLandGroup.com)

**MidwestLandGroup.com**



This property is being offered by Midwest Land Group, LLC, 7111 W. 151st Street, Ste. 27, Overland Park, KS 66223, 913.674.8010. Licensed in AL, AR, IL, IN, IA, KS, KY, LA, MN, MS, MO, MT, NE, OH, OK, SD, TN, TX, WI, and WY.