

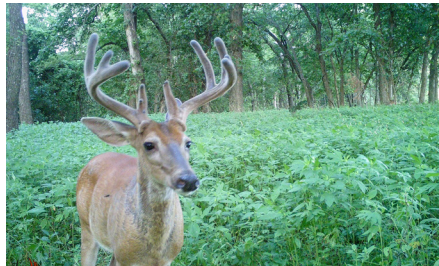
LAND FOR SALE

INCOME AND BIG BUCKS ON THE LITTLE OSAGE



PROPERTY FEATURES

- Taxes - \$1,282
- Big buck neighborhood
- Tillable income
- Stands, blind, and feeders
- Blacktop frontage
- Little Osage riverbottom
- Deer history
- Habitat consultant plan
- Waterfowl potential



PRICE: **\$432,350**

COUNTY: **BOURBON**

STATE: **KANSAS**

ACRES: **86**



For more information, contact:

RYAN LITWIN, Land Agent

620.471.0141 | RLitwin@MidwestLandGroup.com

MidwestLandGroup.com BUYERS, SELLERS, AND LAND – CONNECTED

This property is being offered by Midwest Land Group, LLC, 7111 W. 151st Street, Ste. 27, Overland Park, KS 66223, 913.674.8010. Licensed in AL, AR, IL, IN, IA, KS, KY, LA, MN, MS, MO, MT, NE, OH, OK, SD, TN, TX, WI, and WY.