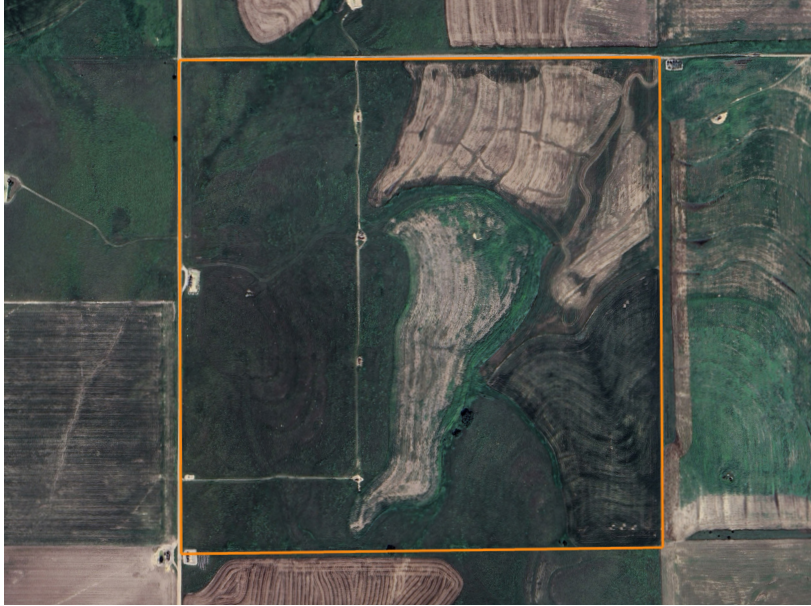


LAND FOR SALE

# FERTILE CROPLAND AND CRP IN BARTON COUNTY

PRICE: **\$364,000**  
COUNTY: **BARTON**  
STATE: **KANSAS**  
ACRES: **160**



## PROPERTY FEATURES

- 76.14 +/- acres of cultivated ground
- NCCPI of 68 on the cultivated ground
- 73 +/- acres of CRP paying \$2,623.00 through 9/30/31
- Class II & III silt loams
- 1/4 mile off 96 Highway
- 8 miles to Great Bend
- Potential build sites
- Available electricity
- Surface rights only
- Excellent upland bird hunting
- Whitetail deer hunting
- Taxes \$1,052.74

For more information, contact:

**COLE SCHUMACHER**, Land Agent

**785.624.2191** | [CSchumacher@MidwestLandGroup.com](mailto:CSchumacher@MidwestLandGroup.com)

**MidwestLandGroup.com**



This property is being offered by Midwest Land Group, LLC, 7111 W. 151st Street, Ste. 27, Overland Park, KS 66223, 913.674.8010. Licensed in AL, AR, IL, IN, IA, KS, KY, LA, MN, MS, MO, MT, NE, OH, OK, SD, TN, TX, WI, and WY.