

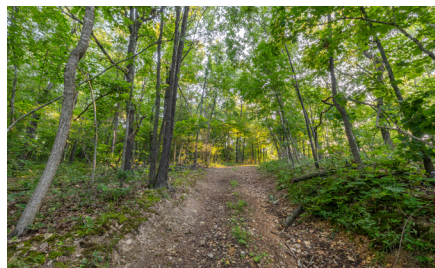
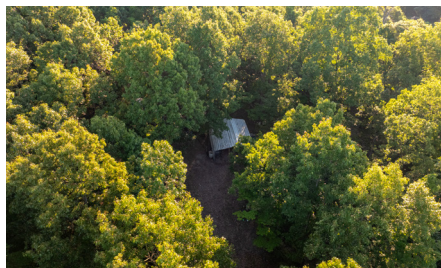
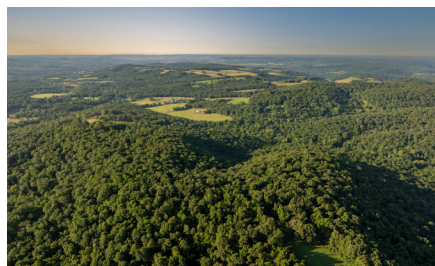
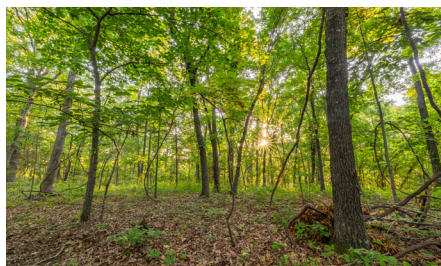
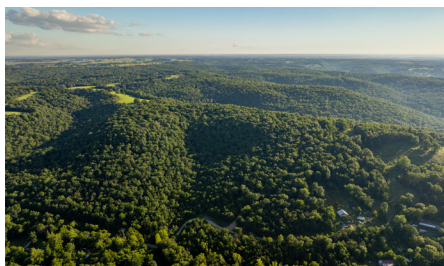
LAND FOR SALE

36 +/- WOODED ACRES IN BARRY COUNTY, MISSOURI



PROPERTY FEATURES

- Secluded
- Good access
- Hunting cabin
- Marketable timber
- Good hunting
- Close to town
- Electric close by
- No restrictions



PRICE: **\$195,000**

COUNTY: **BARRY**

STATE: **MISSOURI**

ACRES: **36**



For more information, contact:

BJORN WILKERSON, Land Agent

417.233.1243 | BWilkerson@MidwestLandGroup.com

MidwestLandGroup.com BUYERS, SELLERS, AND LAND – CONNECTED

This property is being offered by Midwest Land Group, LLC, 7111 W. 151st Street, Ste. 27, Overland Park, KS 66223, 913.674.8010.
Licensed in AL, AR, IL, IN, IA, KS, KY, LA, MN, MS, MO, MT, NE, OH, OK, SD, TN, TX, WI, and WY.