

MIDWEST LAND GROUP PRESENTS



38 ACRES
ALLEN COUNTY, KS

1610 Hawaii Road, Humboldt, Kansas 66748



MIDWEST LAND GROUP IS HONORED TO PRESENT

THE LOG CABIN HOME YOU HAVE DREAMED ABOUT

Welcome to your dream place, truly! Selling turn-key/all home furnishings included. A beautifully crafted, custom log home on 38 +/- incredible acres sitting just outside of Humboldt in Allen County, Kansas. 3,600 square feet +/- with 4 large bedrooms, 3 full bathrooms, a bonus upstairs loft with a wet bar, and an oversized room downstairs that makes for a perfect game room or multi-kids bunk room. The main floor is highly decorated with a beautiful stone fireplace, vaulted ceilings, an antlered chandelier, and a spectacular kitchen and dining room. The back room off the kitchen is the recreational room, with a nice hot tub and game tables for fun entertaining. The master bedroom suite is spacious and boasts a nice walkout porch with perfect views of the pond. The huge gambrel roof barn matches the home and has two electric garage doors, a hay loft, a game cleaning area, a full bathroom, and lots of storage. The 1.5-acre pond is very clear and has an awesome pond house with a fishing dock, fountain, floating dock with a diving board, and a little sandy beach. There is another large metal building for more storage or a workshop. The property

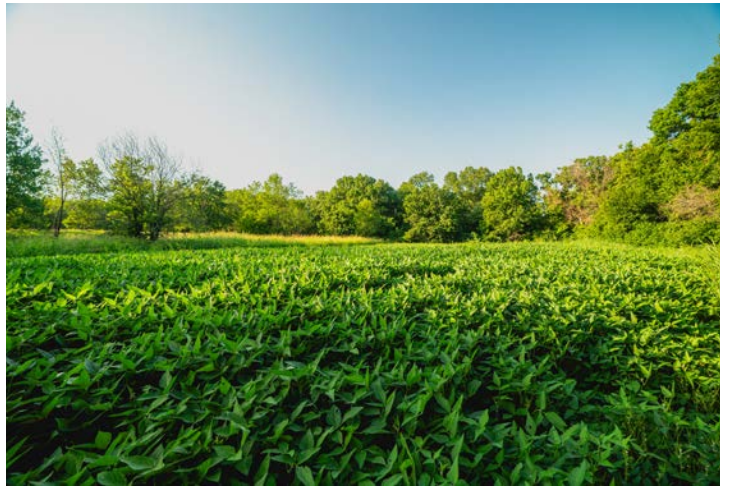
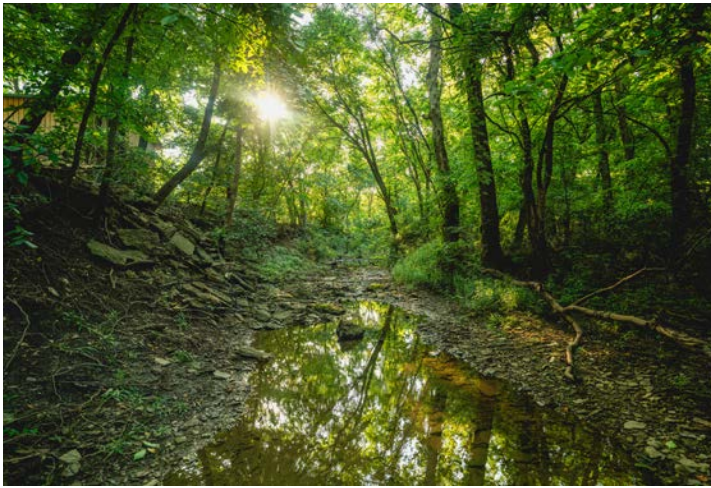
has been meticulously manicured from front to back. Deer and turkeys roam the yard daily, and the hunting on the property is first-class. 1 Redneck blind with all the bells and whistles included with the property, as well as 1 Dillon blind shipped in from Texas. All blinds, stands, and feeders are included with the property and are sitting in well-maintained food plots in great hunting locations. The property comes fully fit with furniture and fixtures included in the sale. High-speed internet, all brand new TVs, a new septic pump, a new hot tub motor, internet boosters, business Wi-Fi ready, premium-grade LVP flooring, solar-powered front gate, central boiler heat system, and a backup generator are just a short list of additional features included here. This is a truly turn-key offering, very pleasantly decorated, in a one-of-a-kind place! This is eastern Kansas country living in pure comfort and luxury. All the relaxation, fun, hunting, and enjoyment that Kansas has to offer in one complete package. Give Shay Haddock a call today at (913) 222-4257 to schedule your private tour of the property.



PROPERTY FEATURES

PRICE: **\$825,000** | COUNTY: **ALLEN** | STATE: **KANSAS** | ACRES: **38**

- Custom log home on 38 +/- acres
- Turn-key offering
- 1.5-acre pond with playhouse, fountain, and dock
- Indoor hot tub
- High-speed internet
- Solar-gated entrance
- Central boiler heating system
- Backup generator
- 1 Redneck blind
- 1 Dillon Major League Bowhunter blind
- 1.5 hours from Kansas City
- Just outside Humboldt, Kansas, city limits



LOG CABIN HOME

A beautifully crafted, custom log home on 38 +/- incredible acres with 4 large bedrooms, 3 full bathrooms, a bonus upstairs loft with a wet bar, and an oversized room downstairs.



ADDITIONAL INTERIOR PHOTOS



HUNTING OPPORTUNITIES

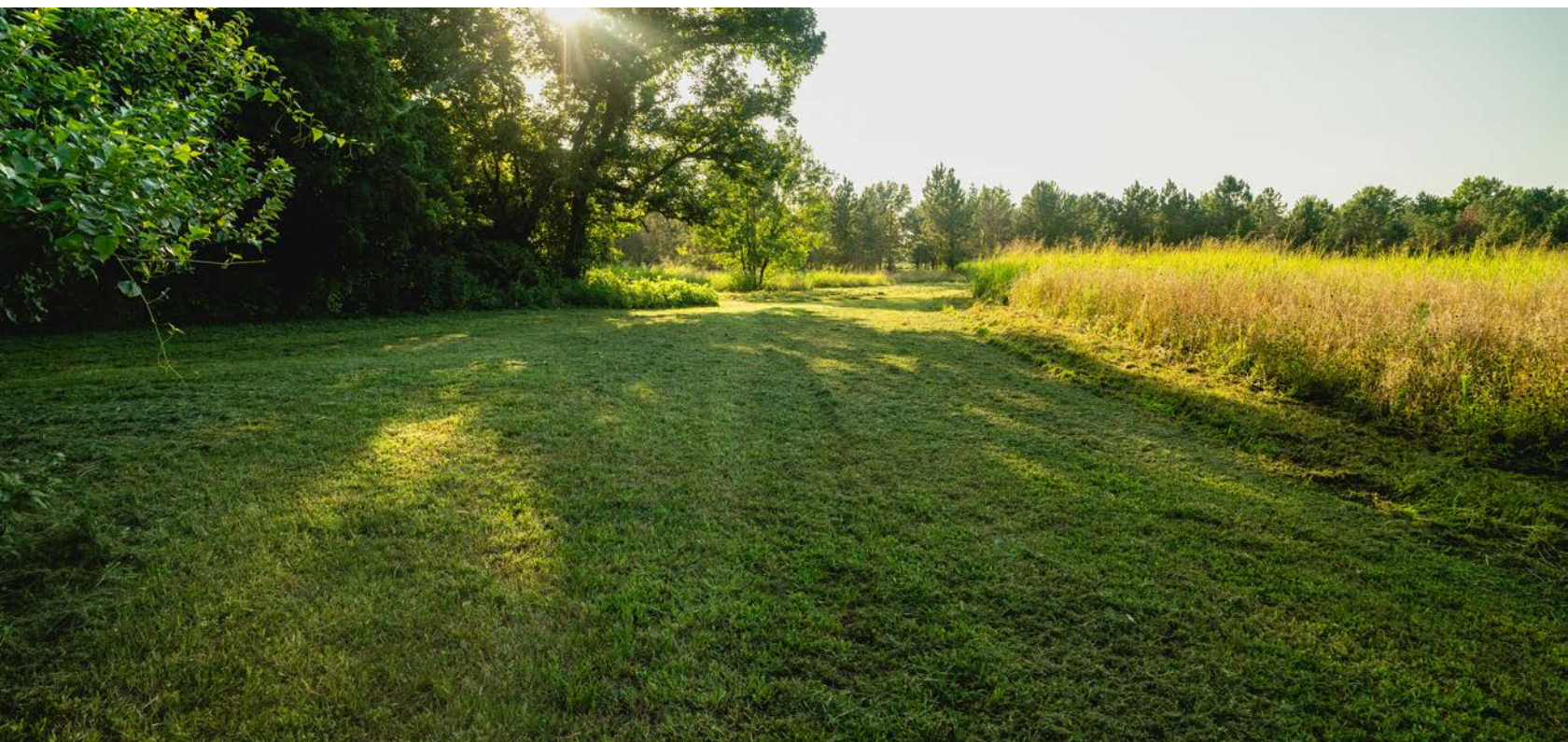


1.5-ACRE POND



38 +/- ACRES

This is eastern Kansas country living in pure comfort and luxury. All the relaxation, fun, hunting, and enjoyment that Kansas has to offer in one complete package.



AERIAL MAP



Boundary Center: 37° 49' 23.3, -95° 23' 36.03

0ft 645ft 1290ft



Maps Provided By:



© AgriData, Inc. 2023

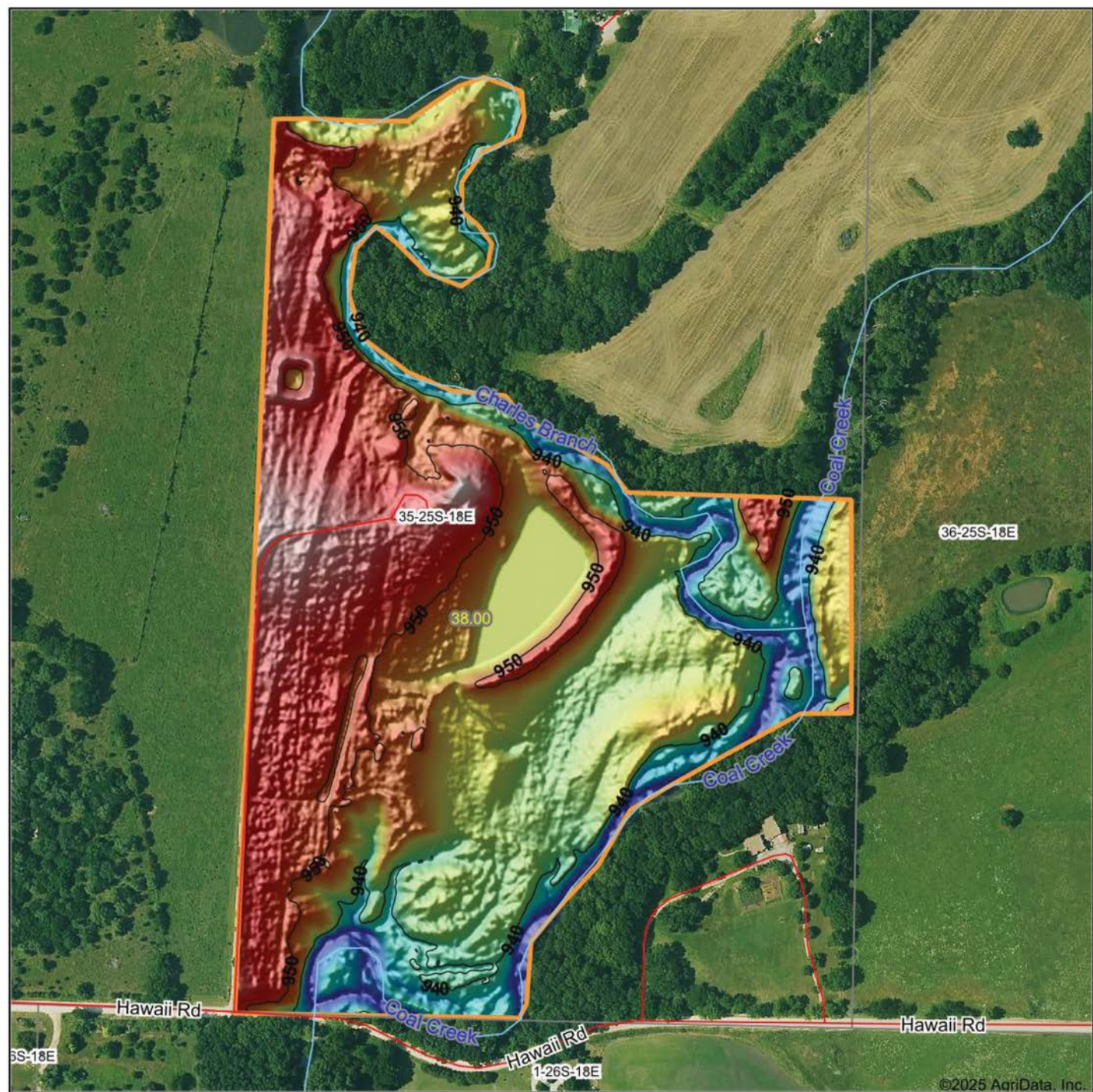
www.AgriDataInc.com

35-25S-18E
Allen County
Kansas



7/30/2025

HILLSHADE MAP



©2025 AgriData, Inc.



Maps Provided By:



© AgriData, Inc. 2023

www.AgriDataInc.com

Source: USGS 1 meter dem

Interval(ft): 10

Min: 931.6

Max: 958.7

Range: 27.1

Average: 946.2

Standard Deviation: 5.87 ft

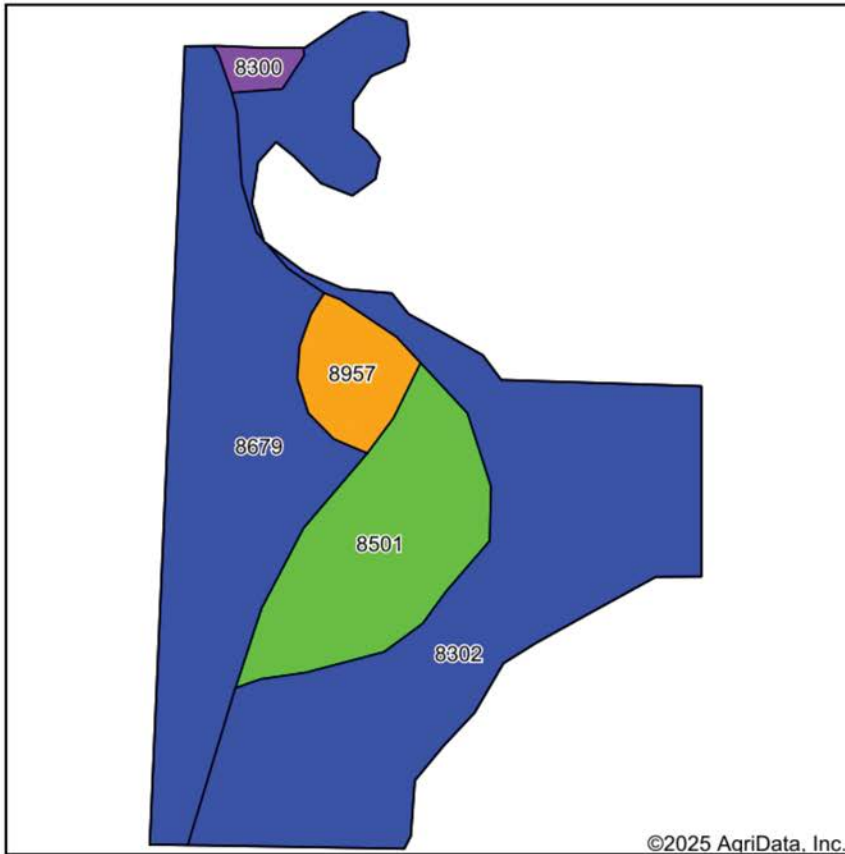


7/30/2025

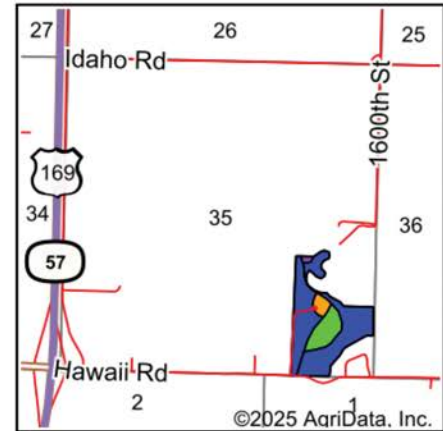
35-25S-18E
Allen County
Kansas

Boundary Center: 37° 49' 23.3, -95° 23' 36.03

SOILS MAP



Soils data provided by USDA and NRCS.



State: **Kansas**
 County: **Allen**
 Location: **35-25S-18E**
 Township: **Humboldt**
 Acres: **38**
 Date: **7/30/2025**



Maps Provided By:



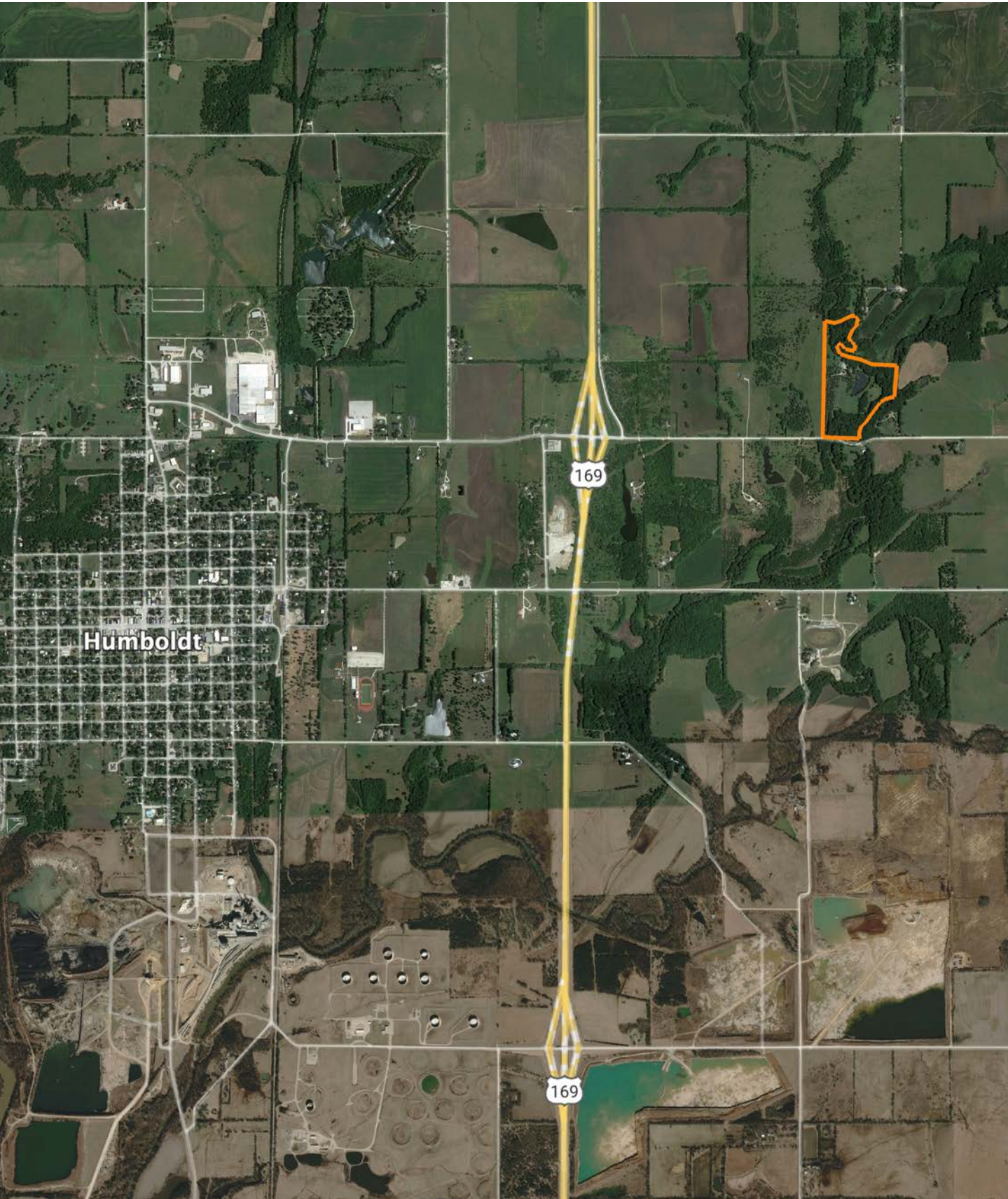
Area Symbol: KS001, Soil Area Version: 24

Code	Soil Description	Acres	Percent of field	Non-Irr Class Legend	Restrictive Layer	Non-Irr Class *c	Range Production (lbs/acre/yr)	*n NCCPI Overall	*n NCCPI Corn	*n NCCPI Small Grains	*n NCCPI Soybeans	*n NCCPI Cotton
8302	Verdigris silt loam, 0 to 1 percent slopes, occasionally flooded	17.97	47.2%		> 6.5ft.	Ilw	7758	82	82	63	75	55
8679	Dennis silt loam, 1 to 3 percent slopes	11.65	30.7%		> 6.5ft.	Ile	4838	79	78	59	64	69
8501	Mason silt loam, 0 to 1 percent slopes, rarely flooded	6.07	16.0%		> 6.5ft.	Iw	8250	78	77	68	71	62
8957	Wagstaff-Shidler complex, 1 to 8 percent slopes	1.85	4.9%		2.5ft. (Lithic bedrock)	Ille	3549	41	40	39	32	18
8300	Verdigris silt loam, channeled, 0 to 2 percent slopes, frequently flooded	0.46	1.2%		> 6.5ft.	Vw	7668	48	48	27	39	14
Weighted Average						1.93	6735.4	*n 78	*n 77.5	*n 61	*n 68.5	*n 58.1

*n: The aggregation method is "Weighted Average using all components"

*c: Using Capabilities Class Dominant Condition Aggregation Method

OVERVIEW MAP



AGENT CONTACT

A lifelong sportsman and recreational enthusiast, Shay Haddock brings his passions to the job: sales and the outdoors. With a background in sales, Shay spent several years at GE Healthcare, where he was in the top 10% of the company. At Midwest Land Group, he's not only fulfilled his dream of connecting people and passions to land and landowners, he is now considered a top producer, consistently landing in the top 5%.

Born in Dallas, Texas, Shay graduated from Arlington High School before heading north to the University of Arkansas to obtain a Bachelor's Degree in Communications. It was here where he was the starting field goal kicker for the Razorbacks in 2008 and 2009. An experienced whitetail hunter with a passion to fly fish and hunt out west with his friends and family. Shay also serves as the Senior Pastor of the Appleton City Christian Church. He lives in Appleton City, Missouri, with his wife, Molly, and their four kids, Gabriel, Joshua, Sadie, and Zeke. When he's not out bowhunting whitetails, you can usually find him fly fishing, bass fishing, golfing, camping, or playing sports with his kids.

A solid and seasoned agent with a proven track record, Shay is dedicated to sharing his passion for the Lord, and the outdoors to help others achieve their dreams. If you're in the market to buy or sell land, be sure to give Shay a call.



SHAY HADDOCK, LAND AGENT
913.222.4257
SHaddock@MidwestLandGroup.com



MidwestLandGroup.com

This property is being offered by Midwest Land Group, LLC. 913.674.8010. All information provided by Midwest Land Group, LLC or their agents was acquired from sources deemed accurate and reliable, however we do not warrant its accuracy or completeness. Midwest Land Group, LLC assumes no liability for error, omission or investment results. Midwest Land Group, LLC. Licensed in Alabama, Arkansas, Illinois, Indiana, Iowa, Kansas, Kentucky, Louisiana, Minnesota, Mississippi, Missouri, Montana, Nebraska, Ohio, Oklahoma, South Dakota, Tennessee, Texas, Wisconsin, and Wyoming.