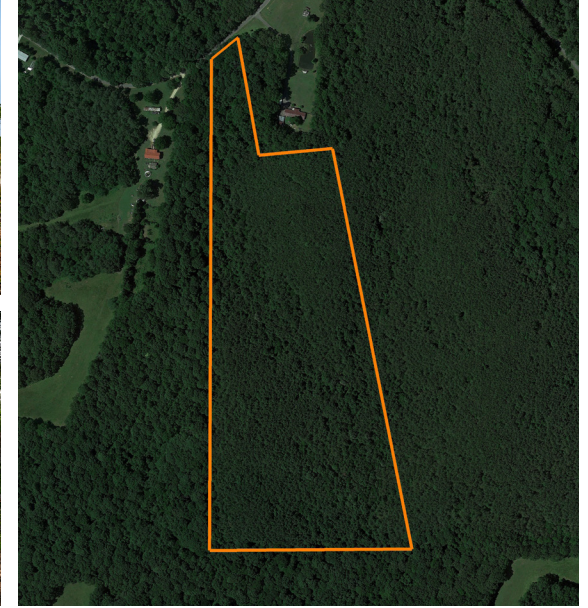


LAND FOR SALE

28 +/- ACRES OF UNRESTRICTED LAND IN WEAKLEY COUNTY, TENNESSEE

PRICE: **\$82,600**
COUNTY: **WEAKLEY**
STATE: **TENNESSEE**
ACRES: **28**



PROPERTY FEATURES

- 28 +/- acres
- 150 feet of blacktop road frontage
- All utilities available at the road
- Cleared areas with good internal access
- Multiple potential food plot locations
- Excellent deer and turkey population
- Seller will split the cost of a new survey
- Seller offering compensation for culvert installation
- 4 minutes to Dresden
- 20 minutes to Paris
- 1 hour to Jackson
- Part of a larger tract - adjacent 57 +/- acre and 85 +/- acre parcels also available



For more information, contact:

REAGAN HANISH, Land Agent

615.588.7120 | RHanish@MidwestLandGroup.com

MidwestLandGroup.com



This property is being offered by Midwest Land Group, LLC, 7111 W. 151st Street, Ste. 27, Overland Park, KS 66223, 913.674.8010. Licensed in AL, AR, IL, IN, IA, KS, KY, LA, MN, MS, MO, MT, NE, OH, OK, SD, TN, TX, WI, and WY.