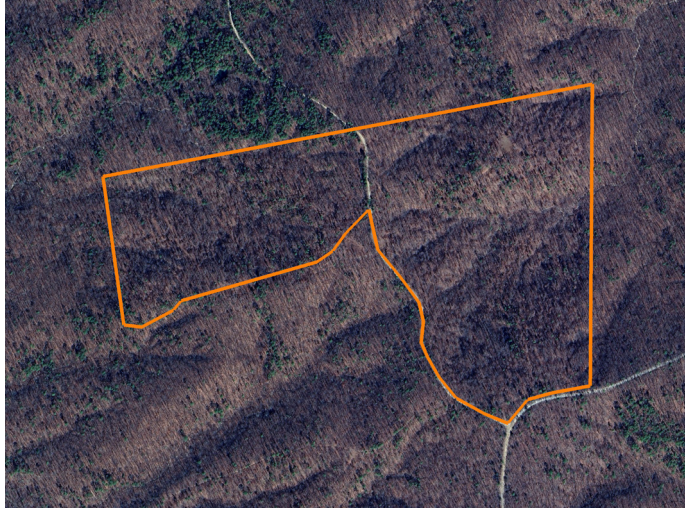


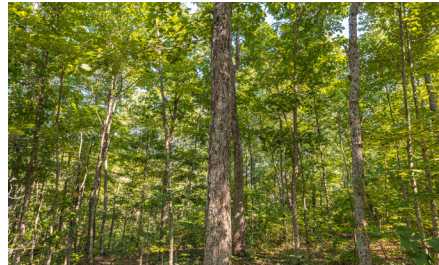
LAND FOR SALE

PERFECT RECREATION PROPERTY BORDERED BY NATIONAL FOREST



PROPERTY FEATURES

- Bordered by Mark Twain National Forest
- Establish trails
- Great hunting
- Great access off Floyd Tower Road
- Secluded food plots in place
- Some marketable timber
- Buildable location for cabin or residence
- Electric available off Floyd Tower Road
- 15 minutes to Potosi
- 1 hour and 20 minutes to St. Louis, MO



For more information, contact:

JASON STOKES, Land Agent

636.465.9445 | JStokes@MidwestLandGroup.com

MidwestLandGroup.com BUYERS, SELLERS, AND LAND – CONNECTED

This property is being offered by Midwest Land Group, LLC, 7111 W. 151st Street, Ste. 27, Overland Park, KS 66223, 913.674.8010.
Licensed in AL, AR, IL, IA, KS, KY, LA, MN, MS, MO, MT, NE, OH, OK, SD, TN, TX, WI, and WY.



PRICE: **\$285,000**

COUNTY: **WASHINGTON**

STATE: **MISSOURI**

ACRES: **100**

