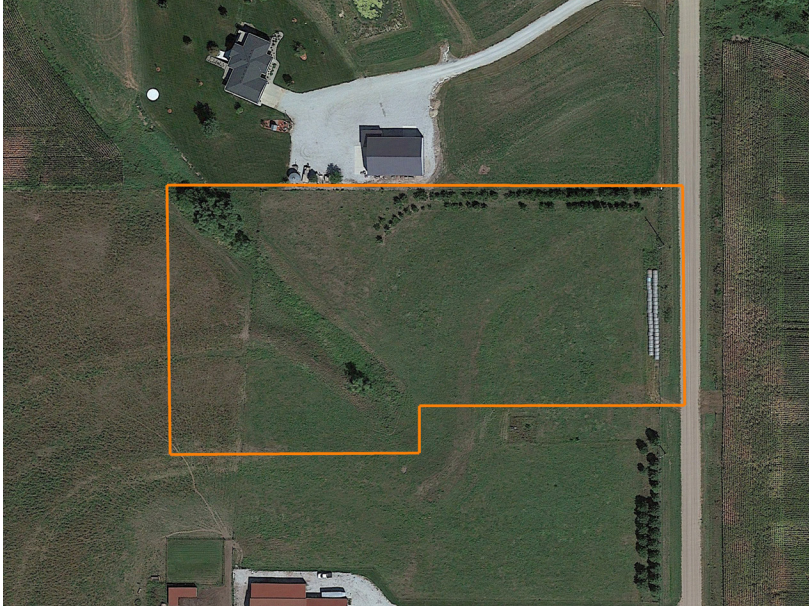


LAND FOR SALE

LOT 3 OF HERITAGE FARMS IN SEWARD, NEBRASKA

PRICE: **\$195,000**
COUNTY: **SEWARD**
STATE: **NEBRASKA**
ACRES: **5.3**



PROPERTY FEATURES

- Lot 3 - 5.32 acres available in the Heritage Farms Acreage Subdivision
- One of Seward, Nebraska's newest acreage developments
- Less than a mile from the edge of Seward
- Less than ¼ mile from paved Waverly Road
- Includes gate and access off 252nd Road
- Stunning walkout views of Plum Creek bottom
- Terraced hillside offers a perfect place for a backyard pond
- Power already located near the south property line

For more information, contact:

JAKE CRNKOVICH, Land Agent

402.509.4343 | JCrnkovich@MidwestLandGroup.com

MidwestLandGroup.com



This property is being offered by Midwest Land Group, LLC, 7111 W. 151st Street, Ste. 27, Overland Park, KS 66223, 913.674.8010. Licensed in AL, AR, IL, IA, KS, KY, LA, MN, MS, MO, MT, NE, OH, OK, SD, TN, TX, WI, and WY.