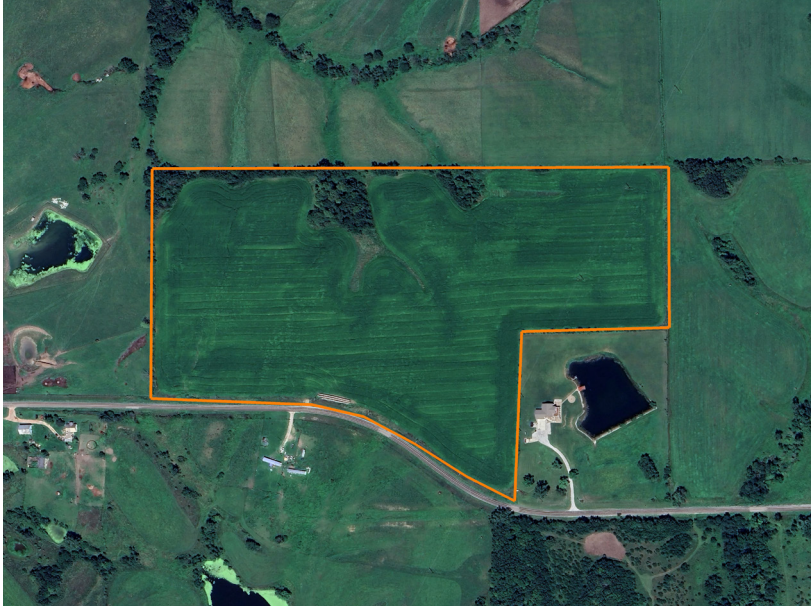


LAND FOR SALE

QUALITY 40 +/- ACRE SCHUYLER COUNTY CROP FARM

PRICE: **\$260,000**
COUNTY: **SCHUYLER**
STATE: **MISSOURI**
ACRES: **40**



PROPERTY FEATURES

- Highly tillable
- Crop production
- Solid income
- Blacktop frontage
- Build site
- Utilities available along the road
- 1.8 miles from Hwy 63
- 14 miles north of Kirksville
- 14 miles south of Iowa



For more information, contact:

BRAD PRATER, Land Agent

660.236.4281 | BPrater@MidwestLandGroup.com

MidwestLandGroup.com

This property is being offered by Midwest Land Group, LLC, 7111 W. 151st Street, Ste. 27, Overland Park, KS 66223, 913.674.8010.
Licensed in AL, AR, IL, IA, KS, KY, LA, MN, MS, MO, MT, NE, OH, OK, SD, TN, TX, WI, and WY.

