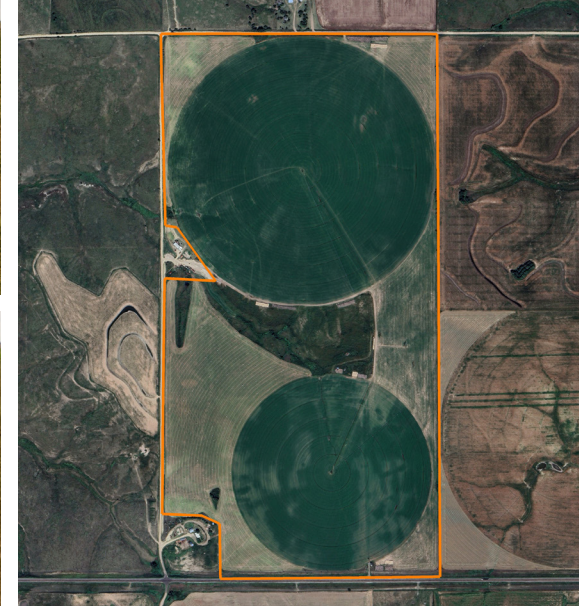


LAND FOR SALE

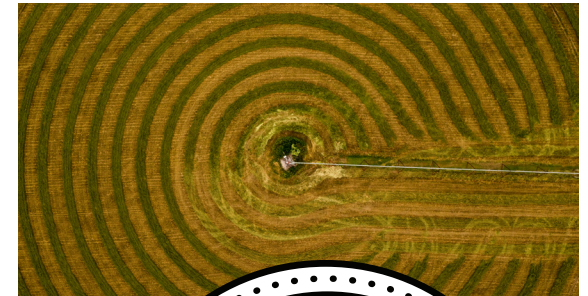
TOP-SHELF IRRIGATED INVESTMENT IN NORTON COUNTY

PRICE: **\$1,850,000**
COUNTY: **NORTON**
STATE: **KANSAS**
ACRES: **290**



PROPERTY FEATURES

- 7-tower Reinke pivot (2000) nozzled at 700 gpm
- 5-tower Reinke pivot (1996) nozzled at 500 gpm
- FSA information
- Total cropland acres - 279.91 +/-
- Wheat - 147.1 base acres - 41 PLC yield
- Corn - 36.6 base acres - 94 PLC yield
- Grain Sorghum - 35.8 base acres - 49 PLC yield
- Total base acres - 233.6



For more information, contact:

COLE SCHUMACHER, Land Agent

785.624.2191 | CSchumacher@MidwestLandGroup.com

MidwestLandGroup.com

This property is being offered by Midwest Land Group, LLC, 7111 W. 151st Street, Ste. 27, Overland Park, KS 66223, 913.674.8010.
Licensed in AL, AR, IL, IA, KS, KY, LA, MN, MS, MO, MT, NE, OH, OK, SD, TN, TX, WI, and WY.

