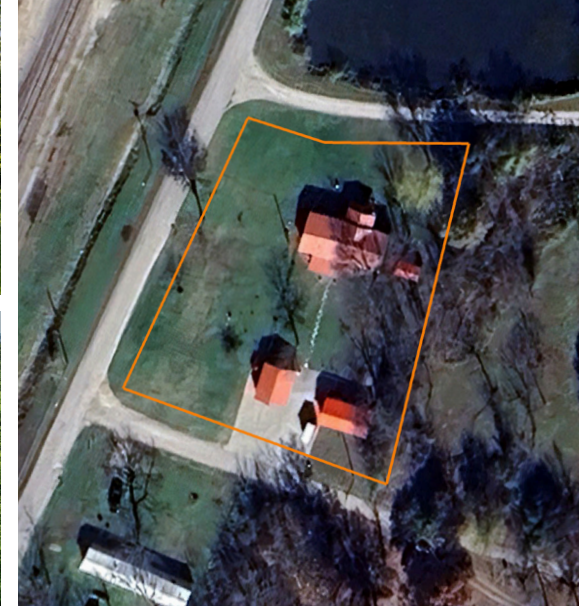


LAND FOR SALE

# VERSATILE INVESTMENT PROPERTY OF 5 CITY LOTS WITH UTILITIES AND IMPROVEMENTS

PRICE: **\$59,000**  
COUNTY: **LACLEDE**  
STATE: **MISSOURI**  
ACRES: **.7**



## PROPERTY FEATURES

- 5 city lots
- City utilities
- Multiple electric meters
- New storage shed
- Matching 1 bay shop
- Gravel parking pad
- Mature landscaping
- Park-like setting
- 15 minute drive to Lebanon, MO
- Very close to I-44



For more information, contact:

**AMBER MILLER**, Land Agent

**417.322.6995** | [AMiller@MidwestLandGroup.com](mailto:AMiller@MidwestLandGroup.com)

**MidwestLandGroup.com**



This property is being offered by Midwest Land Group, LLC, 7111 W. 151st Street, Ste. 27, Overland Park, KS 66223, 913.674.8010.  
Licensed in AL, AR, IL, IA, KS, KY, LA, MN, MS, MO, MT, NE, OH, OK, SD, TN, TX, WI, and WY.