

LAND FOR SALE

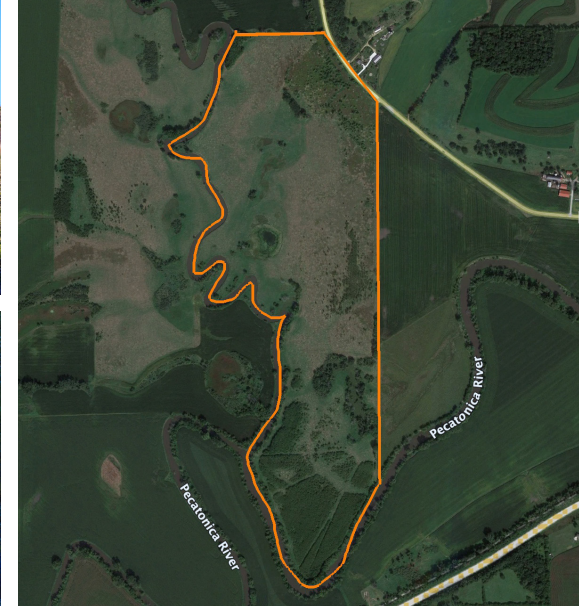
139 +/- ACRE LAFAYETTE COUNTY RECREATIONAL GEM

PRICE: **\$349,999**

COUNTY: **LAFAYETTE**

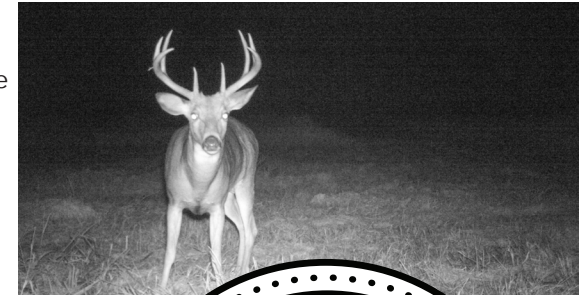
STATE: **WISCONSIN**

ACRES: **139.6**



PROPERTY FEATURES

- Emergency Watershed Protection Program Floodplain easement area
- Abundant whitetail hunting
- Great waterfowl hunting
- Multiple ponds
- Diverse range of habitat
- 1.7 +/- miles of Pecatonica River frontage
- 2023 taxes totaled \$840
- 1 hour from Madison, WI
- 2 hours from Milwaukee, WI
- 2 hours 15 minutes from Chicago, IL suburbs



For more information, contact:

JASON HELLER, Land Broker

815.858.4403 | JHeller@MidwestLandGroup.com

MidwestLandGroup.com



This property is being offered by Midwest Land Group, LLC, 7111 W. 151st Street, Ste. 27, Overland Park, KS 66223, 913.674.8010.
Licensed in AL, AR, IL, IN, IA, KS, KY, LA, MN, MS, MO, MT, NE, OH, OK, SD, TN, TX, WI, and WY.