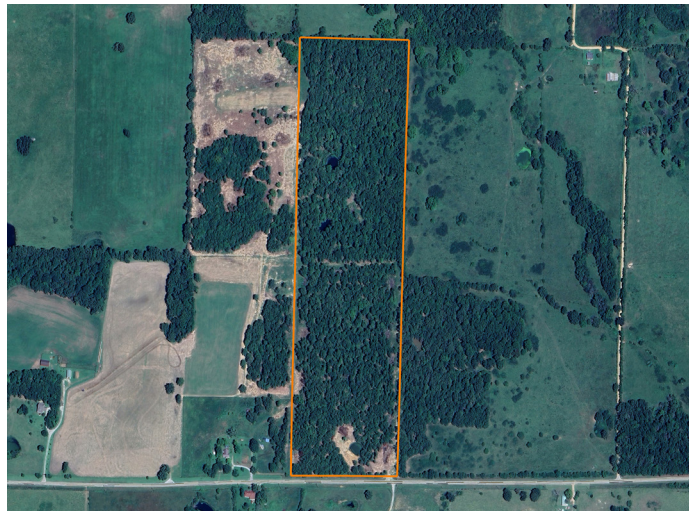


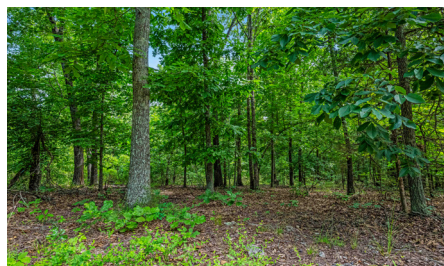
# LAND FOR SALE

## VERSATILE 40 ACRE HOWELL COUNTY TRACT WITH HIGHWAY FRONTAGE AND WILDLIFE



### PROPERTY FEATURES

- Highway frontage
- No restrictions
- Close to West Plains
- Fenced
- 2 ponds
- Electric close
- Great hunting



PRICE: **\$152,000**

COUNTY: **HOWELL**

STATE: **MISSOURI**

ACRES: **40**



For more information, contact:

**BJORN WILKERSON**, Land Agent

**417.233.1243** | [BWilkerson@MidwestLandGroup.com](mailto:BWilkerson@MidwestLandGroup.com)

**MidwestLandGroup.com** BUYERS, SELLERS, AND LAND – CONNECTED

This property is being offered by Midwest Land Group, LLC, 7111 W. 151st Street, Ste. 27, Overland Park, KS 66223, 913.674.8010.  
Licensed in AL, AR, IL, IA, KS, KY, LA, MN, MS, MO, MT, NE, OH, OK, SD, TN, TX, WI, and WY.