

LAND FOR SALE

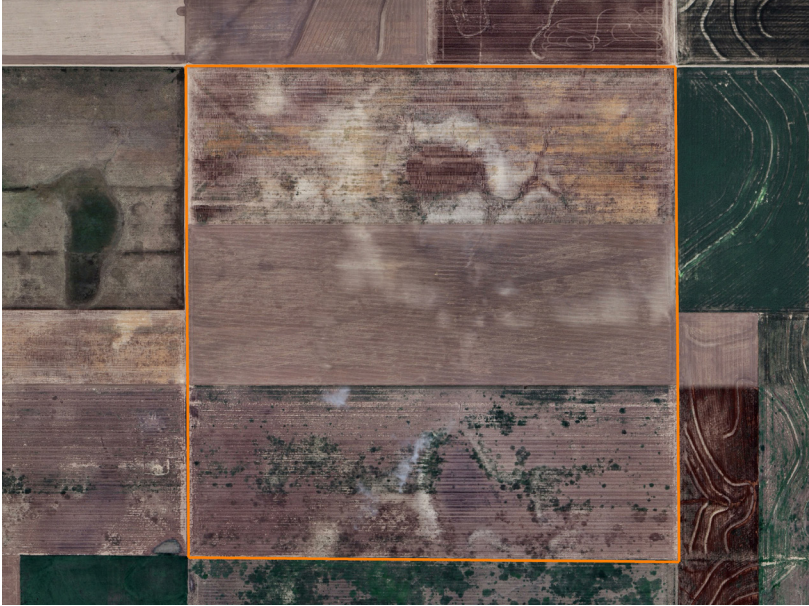
JOYCE FARMS TRACT 2

PRICE: **\$1,876,200**

COUNTY: **FINNEY**

STATE: **KANSAS**

ACRES: **636**



PROPERTY FEATURES

- Flat topography
- Easy access
- Quality Class II & III soils
- Mineral rights transfer
- 100% tillable acres
- Tillable farmland investment
- Productive crop history
- Wind lease
- Exploratory mineral lease
- 2024 taxes: \$5,046.18



For more information, contact:

COLE SCHUMACHER, Land Agent

785.624.2191 | CSchumacher@MidwestLandGroup.com

MidwestLandGroup.com



This property is being offered by Midwest Land Group, LLC, 7111 W. 151st Street, Ste. 27, Overland Park, KS 66223, 913.674.8010.
Licensed in AL, AR, IL, IA, KS, KY, LA, MN, MS, MO, MT, NE, OH, OK, SD, TN, TX, WI, and WY.