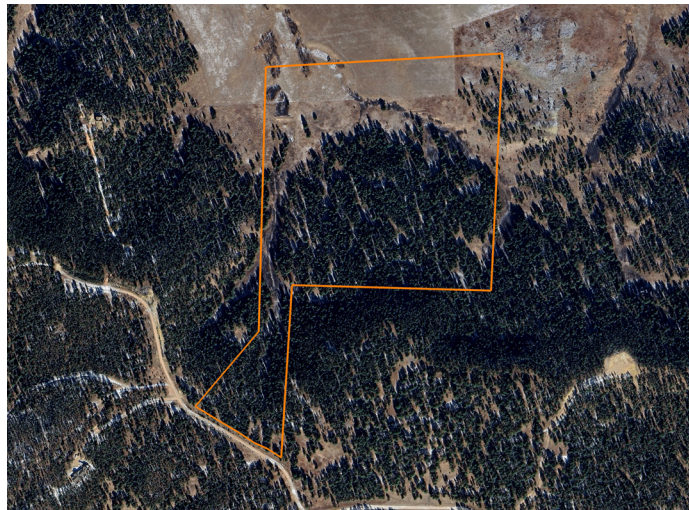


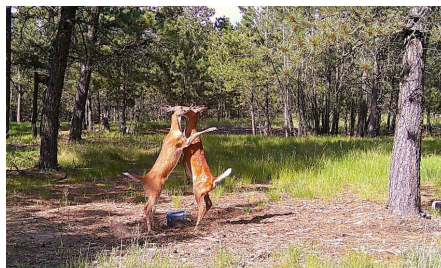
LAND FOR SALE

EXCEPTIONAL RECREATIONAL, HUNTING, AND DEVELOPMENT OPPORTUNITY



PROPERTY FEATURES

- Well-maintained county road access
- Fiber optic internet
- Electricity running down county road
- Stunning ridgetop views
- Mature pine and aspen trees
- Variety of wildlife
- Sportsman's paradise
- Wide open meadows
- Great build sites on southern boundary
- Roughly 16 miles from Upton, WY



PRICE: **\$362,400**

COUNTY: **CROOK**

STATE: **WYOMING**

ACRES: **62**

For more information, contact:

RIDGE BRIGGS, Land Agent

307.851.6937 | RBriggs@MidwestLandGroup.com

MidwestLandGroup.com BUYERS, SELLERS, AND LAND – CONNECTED

This property is being offered by Midwest Land Group, LLC, 7111 W. 151st Street, Ste. 27, Overland Park, KS 66223, 913.674.8010. Licensed in AL, AR, IL, IA, KS, KY, LA, MN, MS, MO, MT, NE, OH, OK, SD, TN, TX, WI, and WY.

