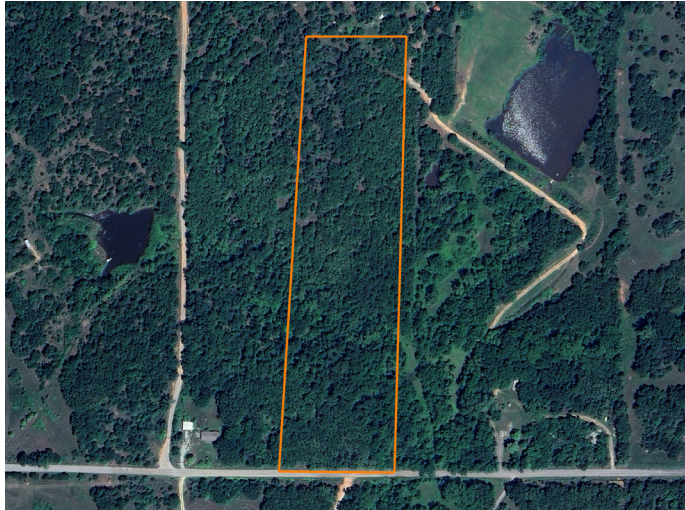


LAND FOR SALE

10 +/- ACRES NEAR BRISTOW AND TURNER TURNPIKE



PROPERTY FEATURES

- 10 +/- acres of primarily wooded land
- Located just minutes from Bristow, OK
- Only 5 minutes to Turner Turnpike gate for easy Tulsa/OKC access
- Situated on a paved road for convenient entry
- Abundant wildlife throughout the property
- Wet-weather creek
- Ideal for a private homesite or future investment
- Peaceful, natural setting with excellent potential



PRICE: **\$77,000**

COUNTY: **CREEK**

STATE: **OKLAHOMA**

ACRES: **10**

For more information, contact:

SUMMER WITTY, Land Agent

918.798.1561 | SWitty@MidwestLandGroup.com

MidwestLandGroup.com BUYERS, SELLERS, AND LAND – CONNECTED

This property is being offered by Midwest Land Group, LLC, 7111 W. 151st Street, Ste. 27, Overland Park, KS 66223, 913.674.8010.
Licensed in AL, AR, IL, IA, KS, KY, LA, MN, MS, MO, MT, NE, OH, OK, SD, TN, TX, WI, and WY.

