

MIDWEST LAND GROUP PRESENTS

7.5 ACRES IN

ANDREW COUNTY MISSOURI



MidwestLandGroup.com

MIDWEST LAND GROUP IS HONORED TO PRESENT

PICTURESQUE BUILD SITE IN ANDREW COUNTY!

Midwest Land Group is very excited to bring to market this gorgeous build site in the Andrew County countryside! The topography of the property allows for multiple build sites along County Road 432 and Highway CC. The property is primarily lush pasture, which provides a great foundation for you to utilize the property as you wish. Utilities are available on the road for easy access to electricity and rural water. The setup

of the property would make a beautiful place for your dream home and would make a great hobby farm. The property is conveniently located just 20 minutes from St. Joseph, Missouri, and minutes from I-29. If set up correctly, your tires would never hit gravel on your drive home! The property is in the sought after Savannah School district as well. Do not let this one get away! Final acreage amount to be determined by survey.



PROPERTY FEATURES

PRICE: **\$124,100** | COUNTY: **ANDREW** | STATE: **MISSOURI** | ACRES: **7.5**

- 7.5 +/- acres
- Final acres to be determined by survey
- Savannah School District
- Minutes from I-29
- 20 minutes from St. Joseph, Missouri
- Utilities available
- Gorgeous build sites
- Gravel and blacktop access
- Blank slate
- Lush pasture



GORGEOUS BUILD SITES

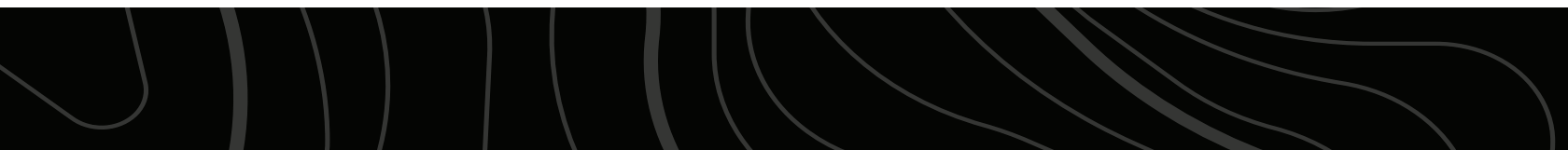
The topography of the property allows for multiple build sites along County Road 432 and Highway CC.



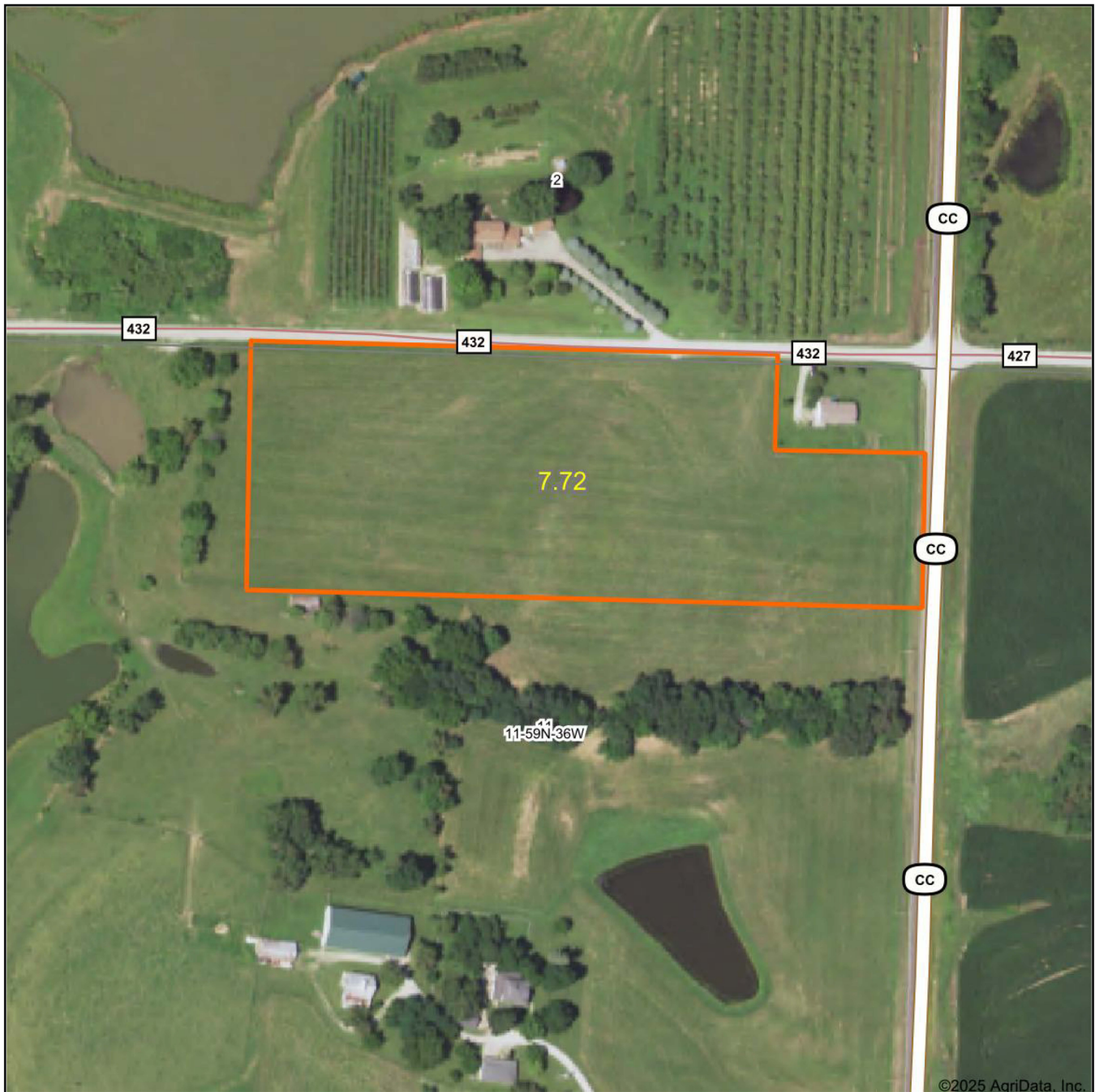
GRAVEL AND BLACKTOP ACCESS



UTILITIES AVAILABLE



AERIAL MAP



Maps Provided By:



© AgriData, Inc. 2023

www.AgridataInc.com

Boundary Center: 39° 57' 5.04, -94° 54' 37.47

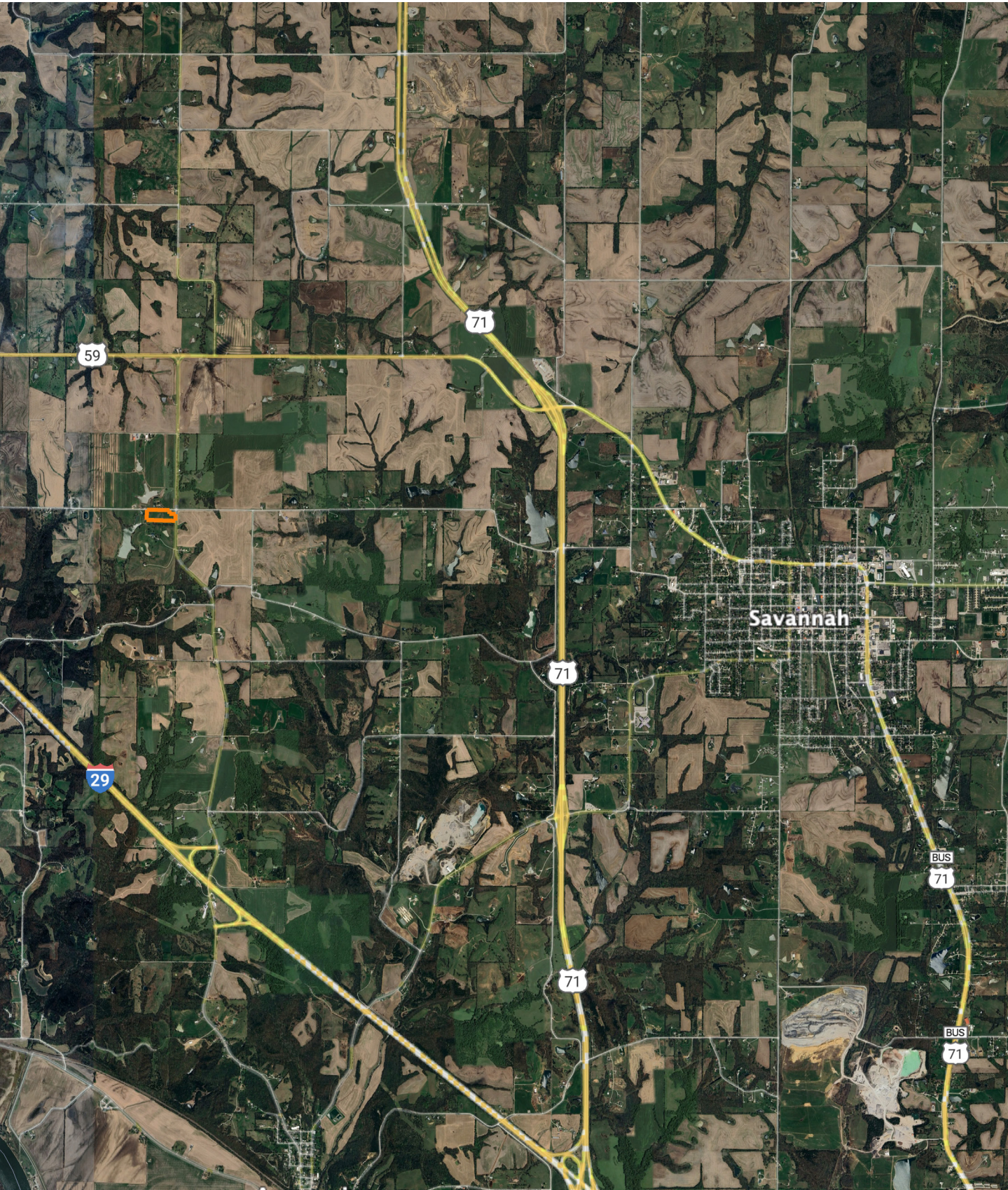
11-59N-36W
Andrew County
Missouri

0ft 229ft 459ft



5/16/2025

OVERVIEW MAP



AGENT CONTACT

Having his grandfather's 200-acre Ray County farm in the family since he was born, Midwest Land Group agent, Brett Roberts knows two things for sure. One, selling property, especially when it's been in the family for as long as some people can remember, isn't just a real estate deal. It's a major life decision. Two, buying land in Northwest Missouri has the potential to become a buyer's family legacy. Brett can relate to both. He listens to buyers to find out what they want in a property so generations to come have a connection to it, and he understands a sale can be emotional for sellers and their families. Brett says, "I pay close attention to what people want out of buying or selling property and how they want the transaction to happen. There are no two listings in the world, much less Northwest Missouri, that are alike. I've traveled Missouri, Kansas, Iowa and beyond following waterfowl migration. Between that and learning how to manage land for deer and turkey from the masters (my grandpa, dad and uncle), I'm a great resource on how to make a piece of land a better investment or hunting property."

While a good portion of Brett's life has been spent on the farm, hunting waterfowl, deer and turkey, he spent just as much time at Kauffman Stadium. Brett is a Kansas City native, and par for the course, a Royals fan. However, Brett's no ordinary fan. He held a dream job throughout high school and college as a Kansas City Royal's locker room attendant for visiting teams. He studied recreation and sports management at Missouri Western State University, and also interned for the Kansas City Chiefs. The experience gave him the opportunity to meet many celebrities across music, movies and sports. "Will Ferrell, Luke Bryan, Charlie Sheen and Zac Brown were some of the most memorable, plus all the players from the visiting teams," recalls Brett. His position with the Royals involved unpacking gear, cooking meals, running errands and doing whatever else the players needed while in town. Suffice it to say that Brett knows hospitality and pays attention to details.

The draw to be outdoors was too great, which led him to a career as a land agent where he combines his interest for meeting new people with his passion for land and hunting. Brett is an avid waterfowl, upland birds, deer and turkey hunter, a Ducks Unlimited member and former board member for the 210 Duck Club, Orrick, Missouri. "If you want to be a successful hunter, you have to build a habitat that supports game and fowl," explains Brett. He's scouted enough land to know what those habitats are. Following waterfowl migration patterns is his favorite pastime, along with spending time with fiancé, Laura, and his family.



BRETT ROBERTS

LAND AGENT

816.309.1218

BrettRoberts@MidwestLandGroup.com



MidwestLandGroup.com

This property is being offered by Midwest Land Group, LLC. 913.674.8010. All information provided by Midwest Land Group, LLC or their agents was acquired from sources deemed accurate and reliable, however we do not warrant its accuracy or completeness. Midwest Land Group, LLC assumes no liability for error, omission or investment results. Midwest Land Group, LLC. Licensed in Arkansas, Illinois, Iowa, Kansas, Minnesota, Missouri, Nebraska, Oklahoma, South Dakota, Tennessee, Texas, Wisconsin, and Wyoming.