

LAND FOR SALE

WILDERNESS RETREAT WASHINGTON COUNTY, MISSOURI - 122 +/- ACRES



PROPERTY FEATURES

- Newer home and pole barn
- Mature timber with immediate harvest available
- Part of an expansive range of timber
- Great wildlife numbers
- Nice ridge-top food plots and wildlife watering holes
- Possible lake sites available
- Many additional recreational opportunities nearby
- Short drives to downtown Potosi, Sullivan, and Richwoods

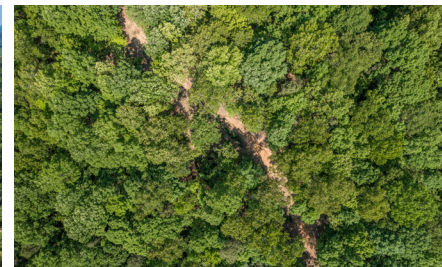


PRICE: **\$525,000**

COUNTY: **WASHINGTON**

STATE: **MISSOURI**

ACRES: **122**



For more information, contact:

JASON STOKES, Land Agent

636.465.9445 | JStokes@MidwestLandGroup.com

MidwestLandGroup.com

BUYERS, SELLERS, AND LAND – CONNECTED

This property is being offered by Midwest Land Group, LLC, 7111 W. 151st Street, Ste. 27, Overland Park, KS 66223, 913.674.8010. Licensed in AL, AR, IL, IN, IA, KS, KY, LA, MN, MS, MO, MT, NE, OH, OK, SD, TN, TX, WI, and WY.

