

MIDWEST LAND GROUP PRESENTS

9 ACRES IN

SHAWNEE COUNTY KANSAS



13319 SOUTHWEST 29TH STREET, TOPEKA, KS 66614

MIDWEST LAND GROUP IS HONORED TO PRESENT

BEAUTIFUL CUSTOM HOME AND ACREAGE NEAR TOPEKA, KANSAS

This 1.5-story house sits on 9 +/- acres just outside of Topeka, Kansas. The house was built in 2009 and has 3 bedrooms, 2.5 bathrooms, and 1 office/bonus room totaling 1,760 square feet. It has an open-concept main floor, high vaulted ceilings, and a large covered front porch overlooking the Kansas prairie and picturesque sunset views. The house has impact-resistant shingles, Pella vinyl windows, 9' ceilings throughout, custom cabinets, updated appliances, and hardwood floors. The property has an exceptional yard and landscaping,

including many planted ornamental trees and conifer trees for windbreaks. There are multiple storage sheds along with an above-ground pool with a custom swim-up bar. Utilities include electric, rural water, propane, septic, and high-speed internet. The property also has a 6 +/- acre pasture with perimeter fencing in place for livestock. Don't miss out on this opportunity for a beautiful custom house and acreage! Contact Trent Siegle at (620) 767-2926 for additional information, disclosures, or to schedule a showing.



PROPERTY FEATURES

PRICE: **\$399,520** | COUNTY: **SHAWNEE** | STATE: **KANSAS** | ACRES: **9**

- 1.5-story house
- Built in 2009
- 3 bedrooms
- 2.5 bathrooms
- 1 office/bonus room
- 1,760 total square footage
- Open concept main floor
- Covered front porch with picturesque views
- Exceptional yard, landscaping, and trees
- Multiple storage sheds
- Above-ground pool with custom swim-up bar
- Electric, rural water, propane, septic, and high-speed internet
- 9 +/- total acres
- 3 +/- acre home site
- 6 +/- acre pasture
- Perimeter fencing around the pasture
- USD 330 or USD 321 School District
- 2024 Taxes: \$3,687.40
- 10 miles from Rossville, Kansas
- 13 miles from Topeka, Kansas

1.5-STORY HOME

The house was built in 2009 and has 3 bedrooms, 2.5 bathrooms, and 1 office/bonus room totaling 1,760 square feet. It has an open-concept main floor and high vaulted ceilings.



ADDITIONAL INTERIOR PHOTOS



PERIMETER FENCING AROUND PASTURE



COVERED FRONT PORCH



6 +/- ACRES OF PASTURE

The property also has a 6 +/- acre pasture with perimeter fencing in place for livestock.



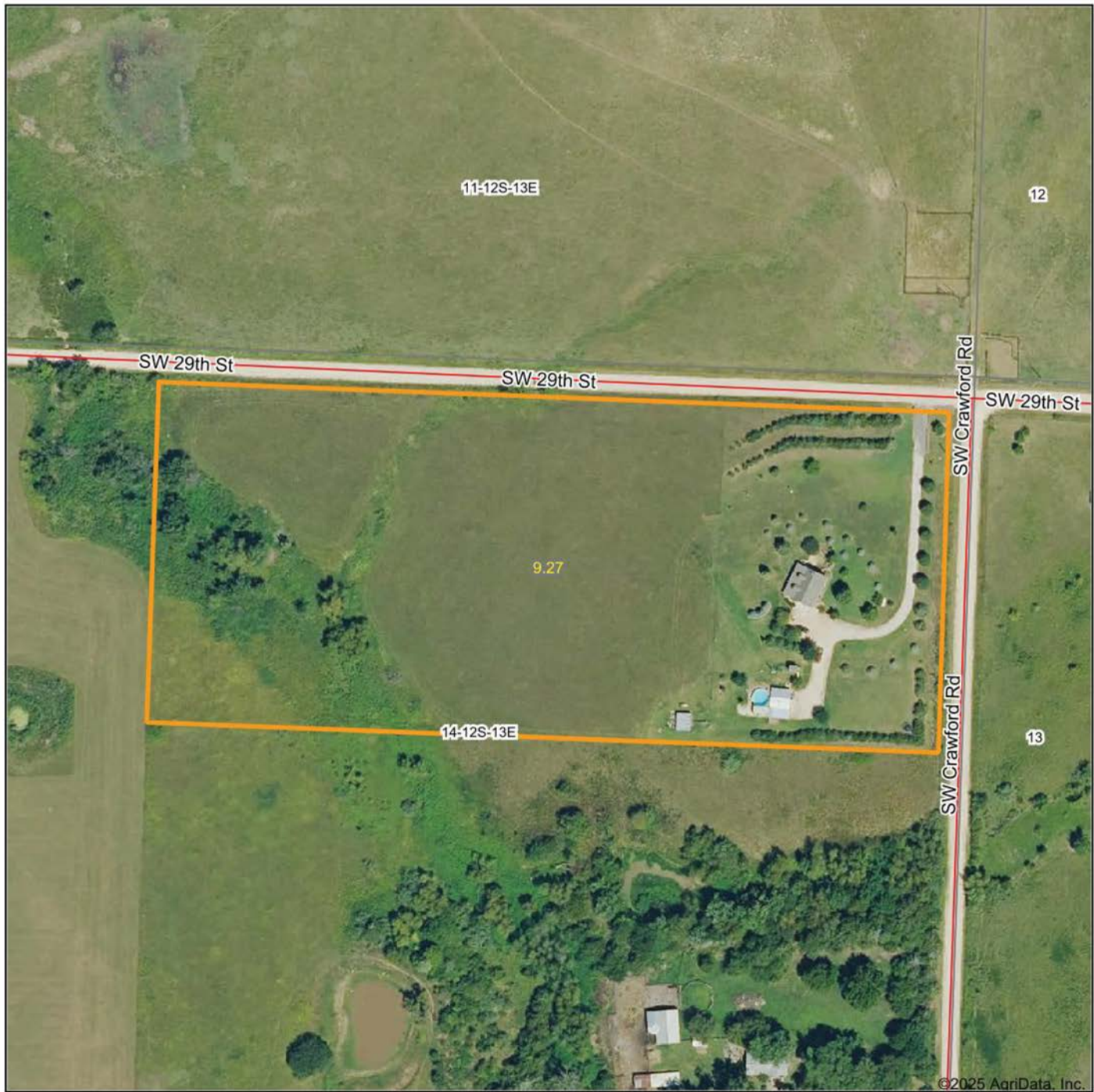
POOL WITH CUSTOM SWIM-UP BAR



MULTIPLE STORAGE SHEDS



AERIAL MAP



©2025 AgriData, Inc.

Boundary Center: 39° 0' 52.82, -95° 55' 47.85

0ft 190ft 380ft



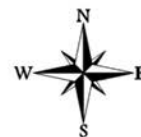
Maps Provided By:



© AgriData, Inc. 2023

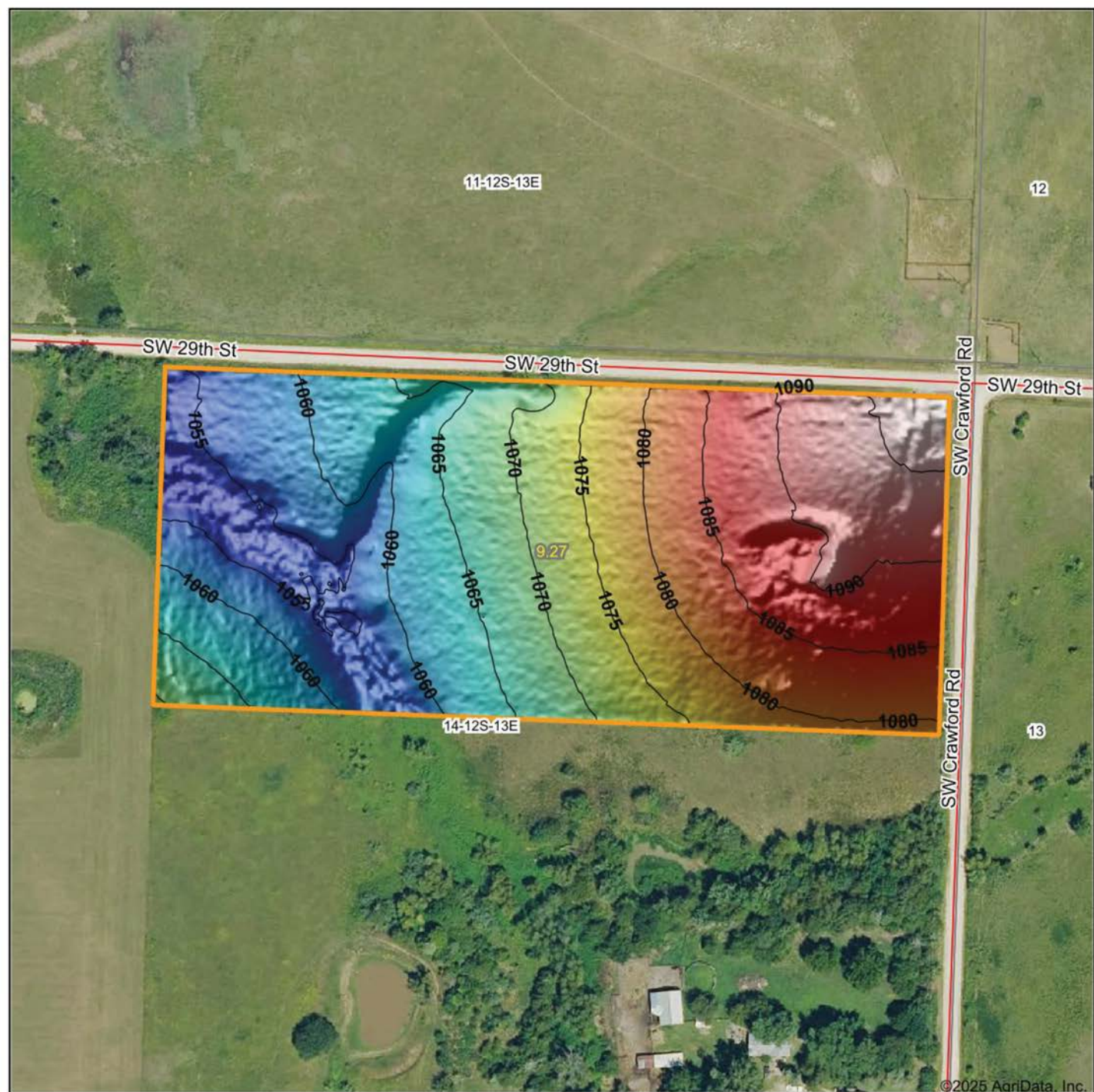
www.AgriDataInc.com

14-12S-13E
Shawnee County
Kansas



4/24/2025

HILLSHADE MAP



Low Elevation High



Maps Provided By:

surety
CUSTOMIZED ONLINE MAPPING
© AgriData, Inc. 2023 www.AgriDataInc.com

Source: USGS 1 meter dem
Interval(ft): 5
Min: 1,052.4
Max: 1,097.6
Range: 45.2
Average: 1,072.3
Standard Deviation: 12.57 ft

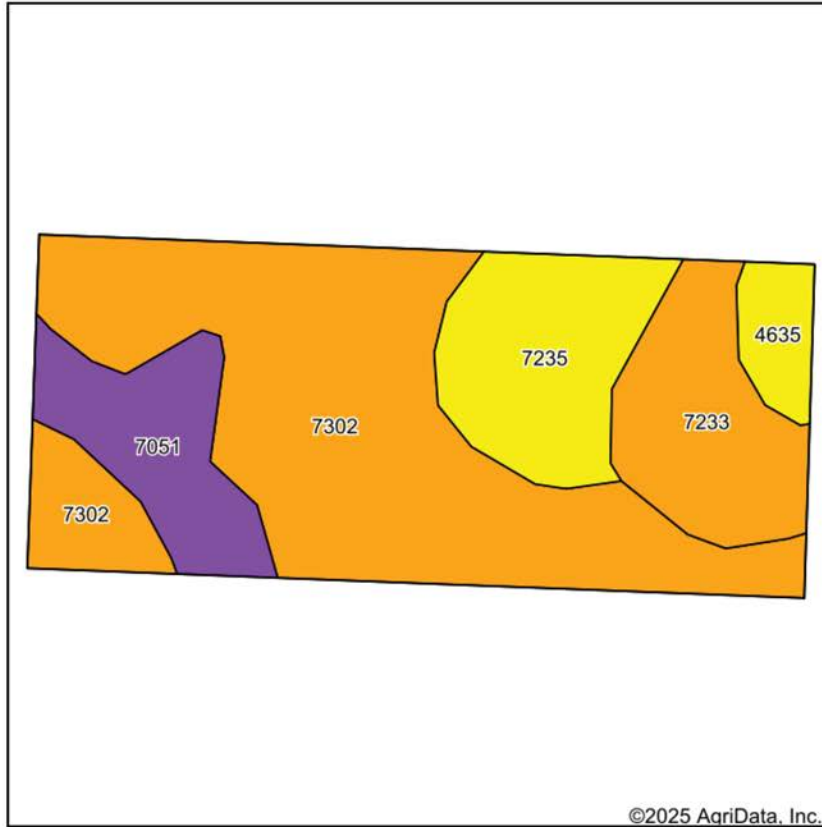
0ft 191ft 382ft



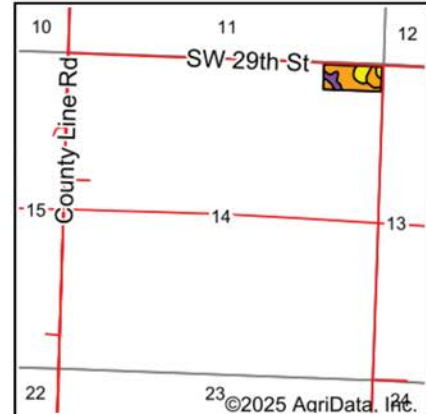
14-12S-13E
Shawnee County
Kansas

Boundary Center: 39° 0' 52.82, -95° 55' 47.85

SOILS MAP



Soils data provided by USDA and NRCS.



State: **Kansas**
 County: **Shawnee**
 Location: **14-12S-13E**
 Township: **Dover**
 Acres: **9.27**
 Date: **4/24/2025**



Maps Provided By:
surety
 CUSTOMIZED ONLINE MAPPING
 © AgriData, Inc. 2023 www.AgriDataInc.com



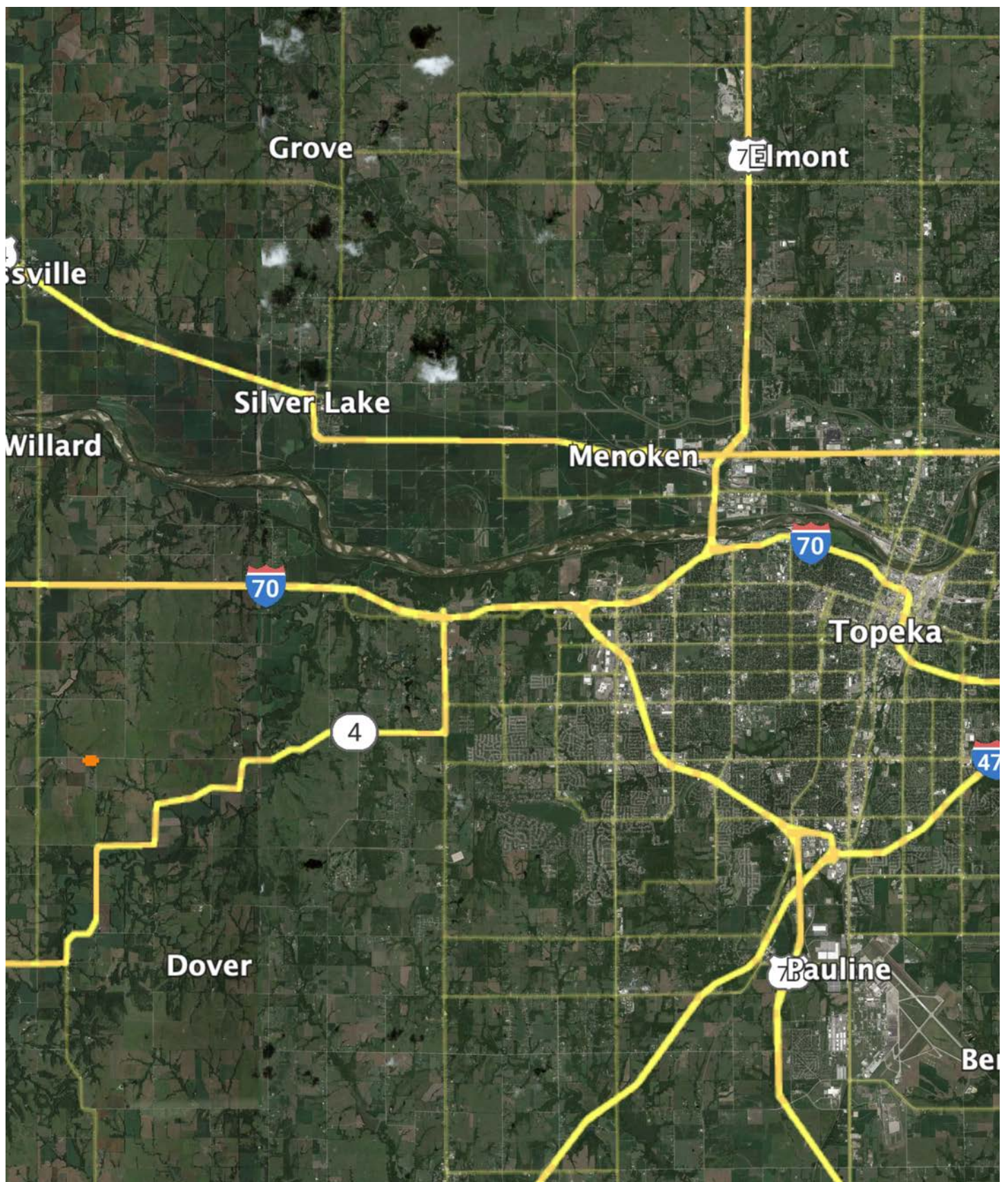
Area Symbol: KS177, Soil Area Version: 23

Code	Soil Description	Acres	Percent of field	Non-Irr Class Legend	Restrictive Layer	Non-Irr Class *c	Range Production (lbs/acre/yr)	*n NCCPI Overall	*n NCCPI Corn	*n NCCPI Small Grains	*n NCCPI Soybeans	*n NCCPI Cotton
7302	Martin silty clay loam, 3 to 7 percent slopes	4.96	53.5%		> 6.5ft.	IIIe	4228	54	50	53	47	
7235	Elmont silt loam, 7 to 12 percent slopes	1.45	15.6%		4.1ft. (Paralithic bedrock)	IVe	4250	83	83	68	62	
7233	Elmont silt loam, 3 to 7 percent slopes	1.35	14.6%		4.6ft. (Paralithic bedrock)	IIIe	4860	81	81	71	71	46
7051	Kennebec silt loam, frequently flooded	1.13	12.2%		> 6.5ft.	Vw	4380	77	77	63	66	
4635	Dwight-Martin silty clay loams, 1 to 3 percent slopes	0.38	4.1%		> 6.5ft.	IVs	3515	53	41	52	49	
Weighted Average						3.44	4312.8	*n 65.2	*n 62.6	*n 59.1	*n 55.2	*n 6.7

*n: The aggregation method is "Weighted Average using all components"

*c: Using Capabilities Class Dominant Condition Aggregation Method

OVERVIEW MAP



AGENT CONTACT

Trent Siegle knows the value of land. He grew up in a rural community, spending every weekend on the family farm raising crops, caring for livestock, and hunting. This helped sculpt him into the land agent he is today. Born in Wichita, raised in Council Grove, and having graduated from Emporia State University with a Bachelor of Science degree, Trent's roots run deep in Kansas. At Midwest Land Group, he's able to combine his love for farming, land management, and hunting with his goal of making people's dreams come true, whether it's a buyer looking to make memories on a piece of land or a seller looking to get the value their cherished land deserves. This accomplished archery hunter is the founder of the Council Grove Archery Club. He's also a member of QDMA, a Prostaff member of Heartland Bowhunter TV show, and a member of the First Congregational Church. Since he was a teenager, he's been a guide for the local Kansas Department of Wildlife and Parks annual youth turkey hunt. He harvested the second-largest non-typical archery buck in Kansas in 2016, won a Golden Moose Award with Heartland Bowhunter Prostaff/Team for Best Videography, and has had many articles and photos featured in a variety of hunting magazines. When not working, you can find Trent hunting, watching sporting events and spending time with his family, including wife, Catherine, and daughter, Harper.



TRENT SIEGLE, LAND AGENT
620.767.2926
TSiegle@MidwestLandGroup.com



MidwestLandGroup.com

This property is being offered by Midwest Land Group, LLC. 913.674.8010. All information provided by Midwest Land Group, LLC or their agents was acquired from sources deemed accurate and reliable, however we do not warrant its accuracy or completeness. Midwest Land Group, LLC assumes no liability for error, omission or investment results. Midwest Land Group, LLC. Licensed in Arkansas, Illinois, Iowa, Kansas, Kentucky, Louisiana, Minnesota, Mississippi, Missouri, Montana, Nebraska, Ohio, Oklahoma, South Dakota, Tennessee, Texas, Wisconsin, and Wyoming.