

MIDWEST LAND GROUP PRESENTS

70 ACRES IN

---

# PIKE COUNTY ARKANSAS

32 ANGELS WAY, CADDO GAP, AR 71935



[MidwestLandGroup.com](http://MidwestLandGroup.com)



MIDWEST LAND GROUP IS HONORED TO PRESENT

# TRUE LOG HOME MINUTES FROM THE CADDO RIVER

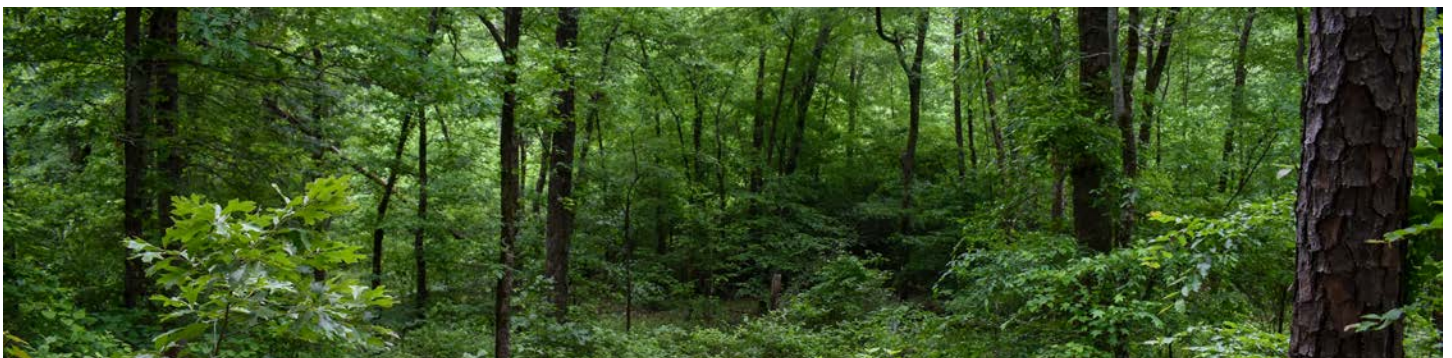
---

Tucked into a grove of mature hardwood timber, this real log home on 70 +/- acres has many great features. The 2,864 +/- square foot home boasts three beds and two baths, porches, decks, and outdoor storage areas. Being located just down the road from the Caddo River, and adjoining the Ouachita National Forest, this acreage is an outdoorsman's dream and in a perfect location.

The real log home is just that, not a log-siding home, but a home with true log construction. The main level of the two-story home has a den, a large living area that could easily be converted into another bedroom, an eat-in kitchen, and a full bathroom. Upstairs, two bedrooms and a full bathroom as well as large closets provide plenty of space for the whole family. Not only will you be able to enjoy the cozy cabin feel of the real log home inside, but outside as well. A back deck along with side and front porches give great views in three directions, and nice quiet spots to enjoy the Ouachita Mountain sunset. Along with the two main levels of the home, a walk-out basement provides an abundance of storage, as well as easy access to appliances and utilities. The basement is partially finished and could be utilized

for just about anything that is needed. Along with the plentiful storage that is inside, there is an abundance outside as well. With a two-car detached garage, a large barn, and two portable storage buildings, there is plenty of room for storing all of the tools and toys needed for outdoor and rural living.

The 70 +/- acres are an outdoorsman's dream, being composed of a mixture of mature hardwood and pine timber, with a mixture of topography perfect for wildlife. Deer and turkey are plentiful in the area, and with ridges and draws perfect for stand locations, there are an ample amount of hunting opportunities. The property boasts a quarter mile of boundary with the Ouachita National Forest, adding another element of privacy and seclusion, as well as access to the oldest and largest national forest in the southern United States. The popular Caddo River is just a few minute's drive from the property and provides opportunities for canoeing, kayaking, and fishing that are hard to beat. Don't miss out on this property that has so much to offer, call today to schedule your showing!





# PROPERTY FEATURES

PRICE: **\$699,000** | COUNTY: **PIKE** | STATE: **ARKANSAS** | ACRES: **70**

---

- 2,864 +/- square foot real log home
- 3 beds, 2 baths
- 70 +/- acres
- Ouachita National Forest Boundary
- Minutes from the Caddo River
- Detached two-car garage
- Multiple storage buildings
- Walk-out basement
- Wood stove
- Porches and decks on three sides
- Mature timber
- Great views
- Excellent deer and turkey hunting
- Good topography
- Private and secluded
- 20 minutes from Glenwood
- 15 minutes to Caddo Gap

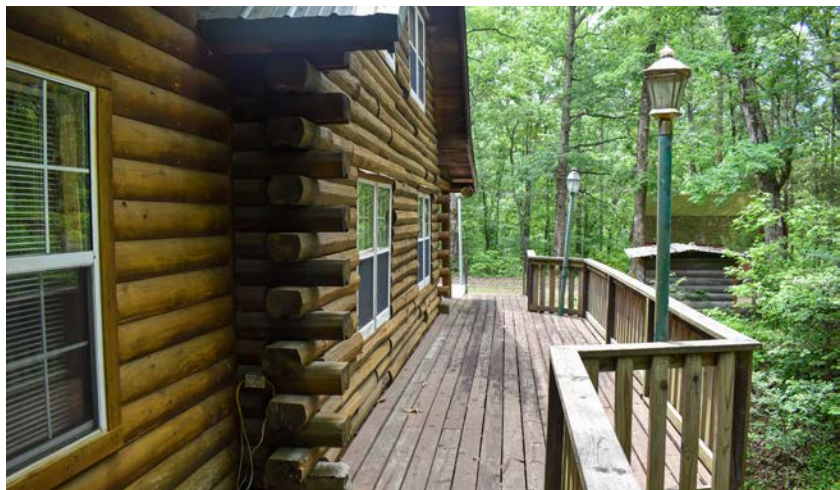




# REAL LOG HOME

---

The 2,864 +/- square foot home boasts three beds and two baths, porches, decks, and outdoor storage areas. The real log home is just that, not a log-siding home, but a home with true log construction.





# INTERIOR PHOTOS





# GREAT VIEWS

---



## MATURE TIMBER

---

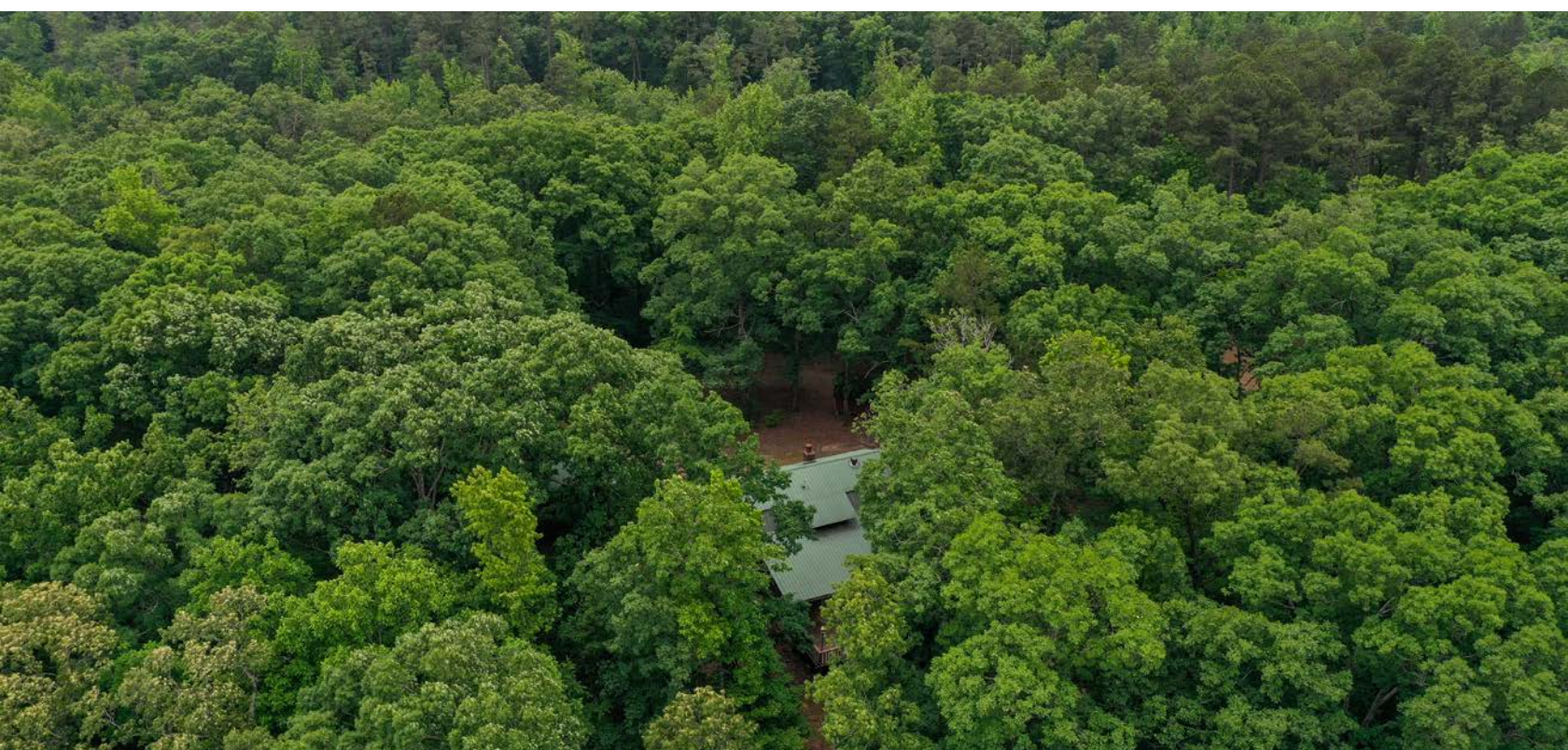




# PRIVATE AND SECLUDED

---

The property boasts a quarter mile of boundary with the Ouachita National Forest, adding another element of privacy and seclusion, as well as access to the oldest and largest national forest in the southern United States.





# MULTIPLE STORAGE OUTBUILDINGS

---

With a two-car detached garage, a large barn, and two portable storage buildings, there is plenty of room for storing all of the tools and toys needed for outdoor and rural living.





# AERIAL MAP



©2025 AgriData, Inc.

Map Center: 34° 20' 31.42, -93° 39' 56.51

0ft 373ft 745ft



Maps Provided By:



© AgriData, Inc. 2023 www.AgriDataInc.com

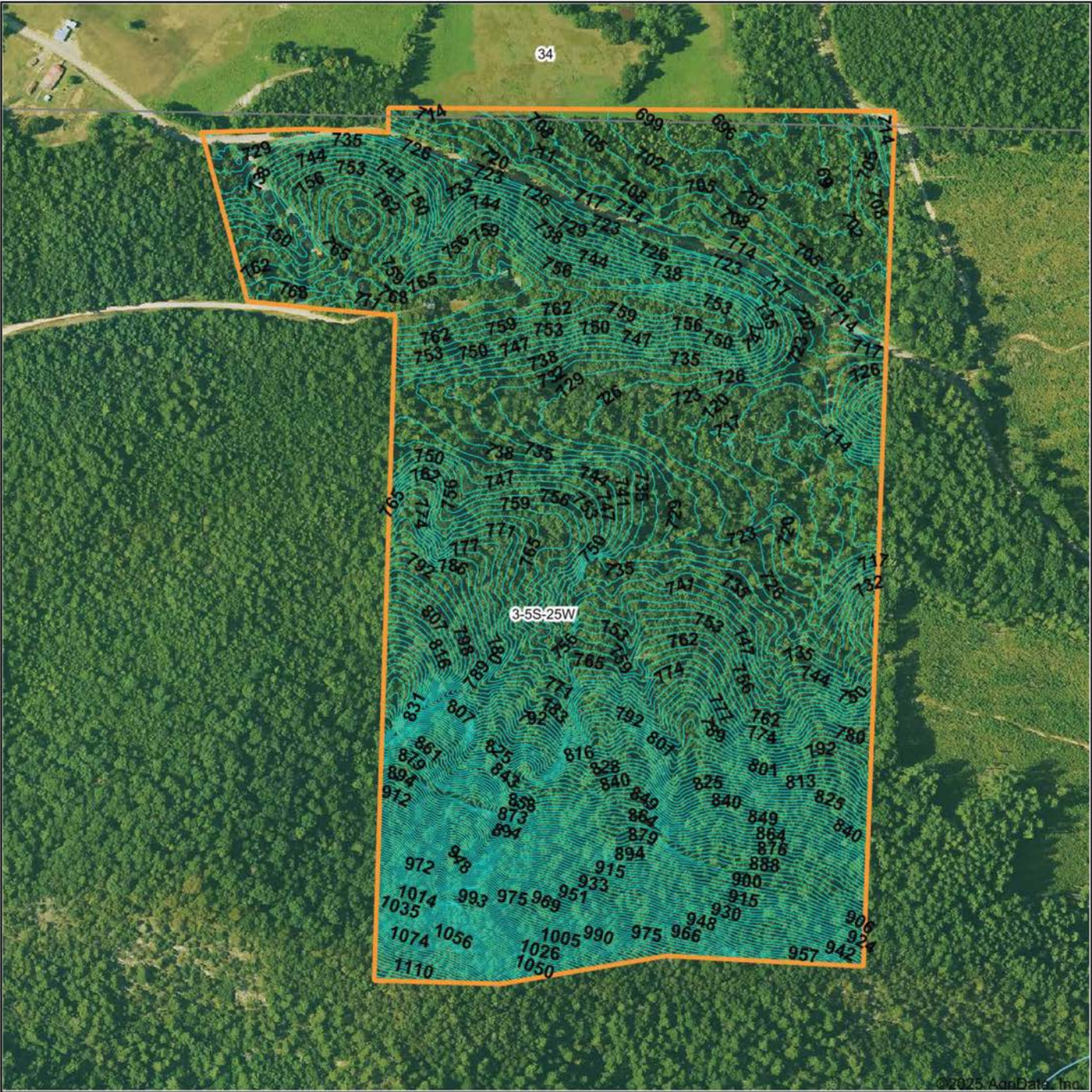
**3-5S-25W**  
**Pike County**  
**Arkansas**



5/21/2025



# TOPOGRAPHY MAP



Maps Provided By:



© AgriData, Inc. 2023

www.AgriDataInc.com

Source: USGS 1 meter dem

Interval(ft): 3.0

Min: 693.5

Max: 1,127.3

Range: 433.8

Average: 784.2

Standard Deviation: 86.78 ft

0ft 406ft 812ft



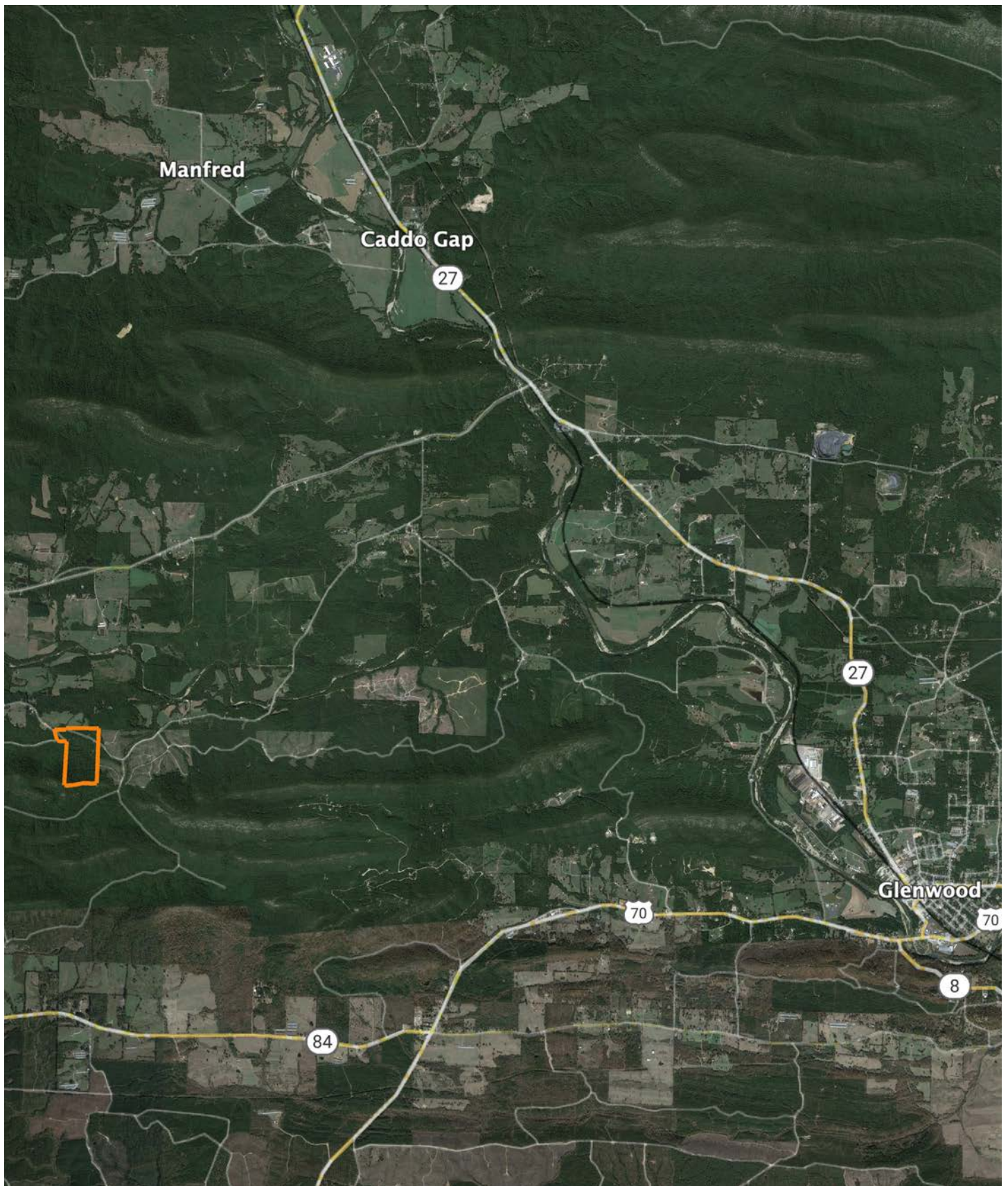
5/21/2025

3-5S-25W  
Pike County  
Arkansas

Boundary Center: 34° 20' 31.42, -93° 39' 56.51



# OVERVIEW MAP





# AGENT CONTACT

Jake Fowler has a love for agriculture. Between his formal education and lifetime of experience with cattle, horses, and poultry, he has a deep understanding of farming operations and how to maximize the efficiency of land. He knows the animals that can be raised in different areas, that soil and grass quality can make all the difference, and that location is integral to a farm's success. Jake has traveled all over western Arkansas and the River Valley area, gaining knowledge and contacts in the cattle, hay, horse, poultry, and timber industries. Born in Russellville, Arkansas, Jake went to Western Yell County High School in Havana, Arkansas, and Connors State College in Warner, Oklahoma, where he graduated cum laude. Before coming to Midwest Land Group, Jake pursued a career in logistics and land management.

Since joining Midwest Land Group, Jake has worked across western Arkansas and the Arkansas River Valley assisting clients with buying and selling cattle farms, estates, homes on acreage, hunting properties, timberland, and more. When he isn't busy helping clients, you can find Jake busy on the farm taking care of his land and cattle, deer hunting, turkey hunting, fishing, or team roping. Jake, his wife Lexie, and their son Wylie reside on their farm in Danville, Arkansas. Give Jake a call today to put his experience to work for you.



**JAKE FOWLER,** LAND AGENT  
**479.393.1997**

JFowler@MidwestLandGroup.com



## MidwestLandGroup.com

This property is being offered by Midwest Land Group, LLC. 913.674.8010. All information provided by Midwest Land Group, LLC or their agents was acquired from sources deemed accurate and reliable, however we do not warrant its accuracy or completeness. Midwest Land Group, LLC assumes no liability for error, omission or investment results. Midwest Land Group, LLC. Licensed in Alabama, Arkansas, Illinois, Iowa, Kansas, Kentucky, Louisiana, Minnesota, Mississippi, Missouri, Montana, Nebraska, Ohio, Oklahoma, South Dakota, Tennessee, Texas, Wisconsin, and Wyoming.